



13

Medical PC

Medical Tablet PC	189
Medical Diagnostic Monitor	190
Medical Panel PC	192

Medical PC

Anewtech provides high-performing, cost-effective and reliable medical PC include color and monochrome diagnostic monitor, medical panel PC and medical tablet PC. All medical PCs are ISO-9001, ISO-14000 and ISO-13485 compliant and can easily apply to a wide range of medical applications.

All medical monitors are manufactured with extreme care from panel selection to final calibration. The luminance, viewing angle and chromaticity are carefully inspected. The entire range of medical PC are certified with safety standard, including UL 60601-1, CE (EN 60601-1-2), FCC Class B, TÜV GM, VCCI, BSMI and CCC.



Medical Tablet PC/ Mobile Clinical Assistant

Mobile clinical assistant (MCA) is a category of mobile computing platform that is customized for healthcare specific use at the point of care, supporting the workflow of nurses and clinicians.

Features:

- Fingertip & stylus accessible, automatically timing control & palm rejection implemented
- RFID Reader, Barcode Scanner, Fingerprint Reader, Webcam and Microphone Array
- Sustainable from the free drop (4 feet height) and severe ingress level (IP54)



Medical Diagnostic Monitor

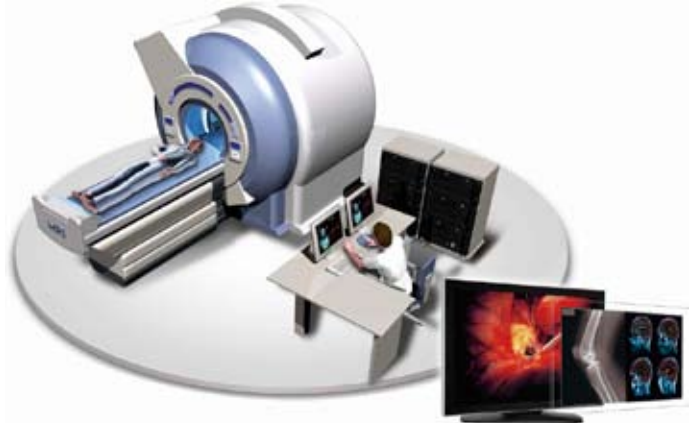
Monochrome diagnostic monitor, MMD-5201M

With unique 12-bit GrayBoost® grayscale technology, the MMD-5201M produces 4096 simultaneous grayscale tones and provides the most reliable image for diagnostic applications, especially for mammography practice.

Colour diagnostic monitor, MMD-4300C

The 30" MMD-4300C integrates multiple viewing modes and color-to-grayscale technology, enabling flexible viewing options. MMD-4300C is ideal for 3D color rendering and image fusion applications.

Both MMD-5201M and MMD-4300C awarded by Taiwan Excellence 2008, the highest accolade awarded to products that encapsulate innovation.



Medical Panel PC

Medical panel PC is especially designed to fit into hospital environments with its excellent outlook, water /dust resistance capability, high computing performance and "no noise" system. Anewtech offers fanless, high performance, multi-purpose and the UPS series medical Panel PC. All medical Panel PCs are certified with EN60601-1 & IEC 60601-1(TUV), CCC, FCC Class B, CE (EN60601-1-2), and UL60601-1.

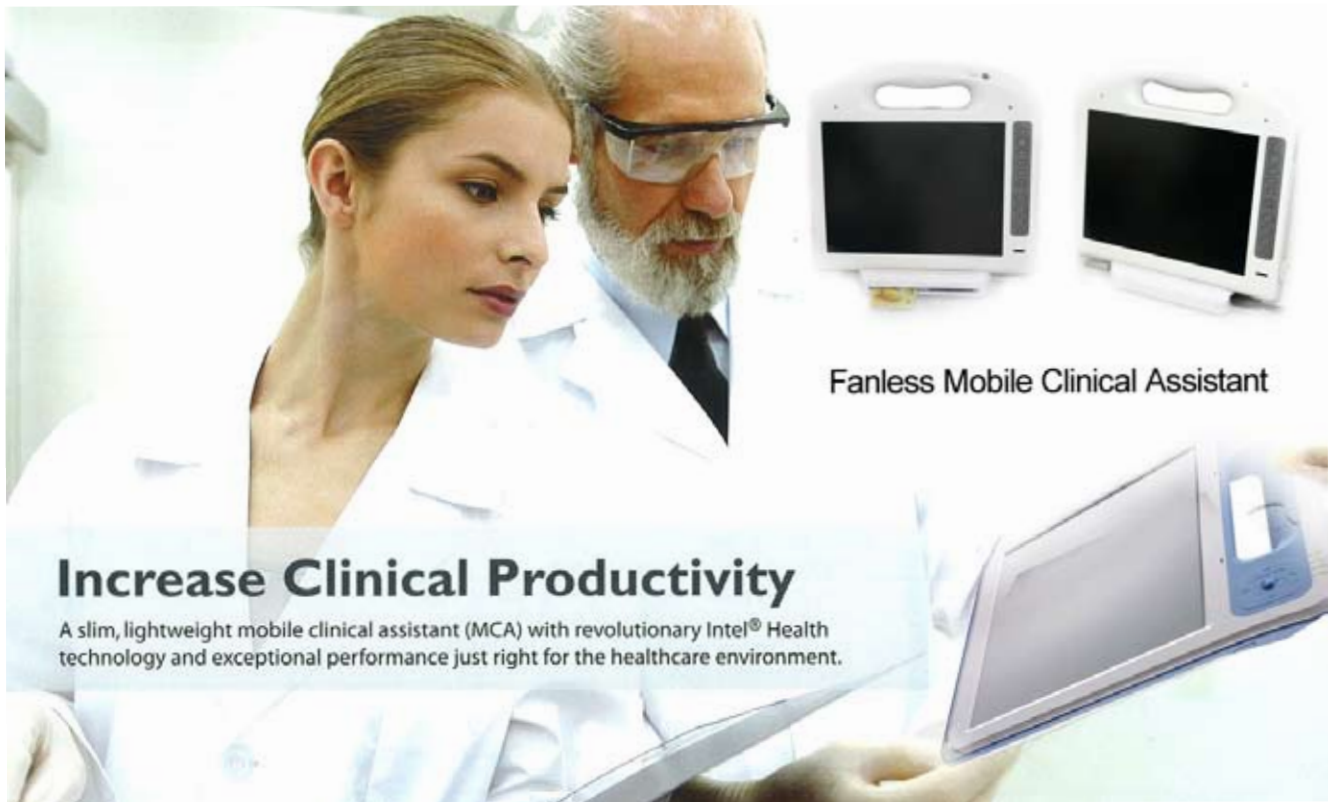
Applications:

- Patient information terminal
- Integration with medical cart
- Medical imaging terminal



Medical PC

Medical Tablet PC/ Mobile Clinical Assistant



Increase Clinical Productivity

A slim, lightweight mobile clinical assistant (MCA) with revolutionary Intel® Health technology and exceptional performance just right for the healthcare environment.

Computing System	Chipset	Intel Poulbso SCH
	CPU	Intel Atom Processor Z510 (1.1 GHz) / Z530 (1.6 GHz)
	Cache and FSB	512 KB on-die L2 cache and 400 MHz / 533 MHz FSB
	Memory	DDR2 667 MHz SODIMM (2 GB)
	Operating System	Windows XP Professional or Windows XP Embedded (Windows XP Tablet PC Edition optional)
Cooling		Fanless
Graphics	Controller	Intel Graphics Media Accelerator 500
	VRAM	8 MB
Storage	PATA HDD	1 x 1.8" PATA HDD with 60 GB capacity
	SSD	Optional, either SSD or PATA HDD
Display	Touch Panel	Dual – Digitizer & Resistive
	Display Type	10.4" XGA TFT LCD (1024 x 768)
	Max. Resolution / Max.color	1024 x 768 / 256 K (RGB 6-bit color data)
	Viewing Angle	90°/50°
	Luminance	260 cd/m ² (typical)
	Contrast Ratio	250 : 1 (typical)
Communications	WIFI	Integrated Wireless 802.11 a/b/g/n connection
	Bluetooth	Integrated Bluetooth v2.0 + EDR
	3.5G module (Optional)	* Customer needs to pay for regional certification fee.
Audio		Internal speaker x 1, Internal mono microphone x 2
Connectivity	I/O Port Interfaces	Power-in jack x 1, Docking connector x 1, mini USB port x 1 * 2.0 Mega pixel camera with auto-focus and one LED light
	Embedded I/O Devices	* 13.56 MHz RFID with ISO15693 & ISO14443A/B and active tag function
		* 1D/2D and UDSI Barcode scanner (optional)
		* VGA camera for webcam (default) or optional Integrated Fingerprint Reader
Control Buttons		* Power button * Camera snapshot * RFID read trigger button * 3 programmable buttons: P1 default setting for entering S3 mode, P2 default setting for WIFI on/off, the centerpoint button has no default setting
		* Screen lock button * Barcode button
	System Indicators	Power x 1, WIFI x 1, RFID x 1, Bluetooth x 1
VESA Cradle Connectivity	I/O Interfaces	VGA (dual independent display support), USB and LAN ports
Power Supply	AC Adapter In / Out	100 - 240 V – 1.62 A 50/60 Hz / 15 V, 4.2 A Max, 63 W
	Battery Type / Capacity	Lithium-ion standard battery / 3760 mAh
	Battery Charge Time	2.5 hours
	Battery Operating Time	4 – 6 hours
Environment	Temperature	Operating: 0° C – 40° C, Storage: -20° C – 60° C
	Humidity	Operating: 10% – 90% @ 40° C non-condensing, Storage: 10% – 95% non-condensing
	Shock Resistance	Operating: 10 – 20 G, 11 ms, Non-operating: 50 G, 11 ms
	Water/Dust Resistance	IP54
	Drop Resistance	91 cm
Physical Characteristics	Dimensions (W x H x D)	258.4 x 258.3 x 42.75 mm
	Weight	1.5 kg (3.3 lbs.)
Standards	Safety	FCC Part 15 Class B, UL, CUL, CE, CB60950, CCC, R&TTE (99/5/EC)
	Medical	UL60601-1, IEC/EN60601-1, CB60601-1, TUV
	Battery pack	UL2054 and UN38.3
Warranty		Standard 2 year warranty

1

Industrial Computer

2

Compact PCI

3

Embedded Computer

4

Panel PC/ LCD Monitor

5

Human Machine Interface

6

Digital Advertising

7

Serial & Wireless Connectivity

8

Digital Video Surveillance

9

Network Security Appliance

10

Data Acquisition & Control

11

Industrial RFID

12

Industrial Ethernet Switch

13

Medical PC

14

Power Supply

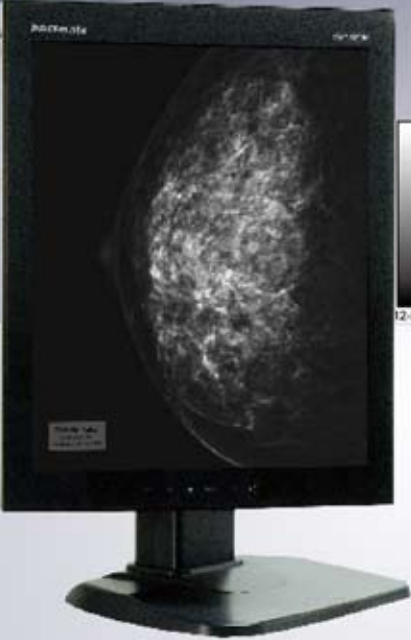
15

Accessories

Medical Diagnostic Monitor

Monochrome Diagnostic Monitor





MMD-5201M

51cm(20.1") Diagnostic Grayscale Monitor

12-bit

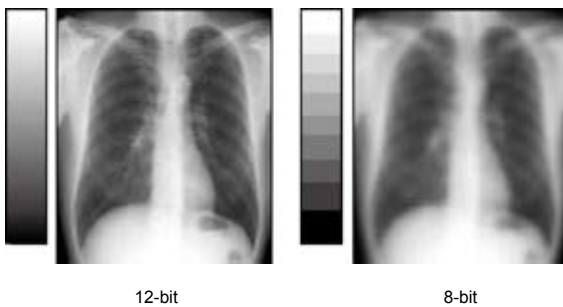
5MP

- 20.1" grayscale TFT LCD
- 5MP-2560(H) x 2048(V)
- Max. luminance: 850cd/m²
Max. calibrated luminance: 600cd/m²
- 600:1 exceptional contrast ratio
- Out-of-box DICOM compliant
- Intelligent display mode auto adjustment with graphic card auto detection
- GrayBoost® 12-bit to 12-bit LUT provides simultaneously 4,096 tones of gray
- Ready for Deep color and HDMI™ 1.3 with GrayEasy® technology for 12-bit grayscale displaying

High-Resolution Monochrome Monitor	Anewtech MMD-5201M 12-bit 5MP	Anewtech MMD-3213M 12-bit 3MP	Anewtech MMD-2213M 12-bit 2MP
LCD Size	20.1"	21.3"	21.3"
Resolution	2560 x 2048	2048 x 1536	1600 x 1200
Max. Luminance	Typical : 850cd/m ² Calibrated: 600cd/m ²	Typical : 800cd/m ² Calibrated: 600cd/m ²	Typical : 1000cd/m ² Calibrated: 600cd/m ²

GrayBoost® 12-bit Simultaneous Grayscale

12-bit (4096 tones) image input can be all retained in 12-bit (4096 tones) image output via built-in 12-bit LUT. The GrayBoost® technology successfully produces 12-bit image data flow through commercial duallink graphic card, lowering total cost of ownership.

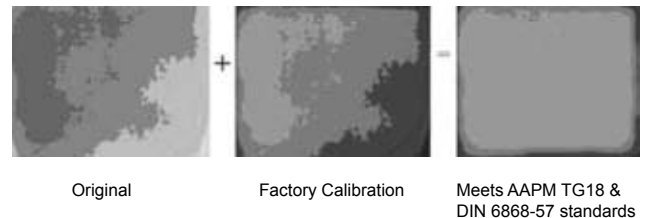


GrayEasy® HDMITM 1.3 Grayscale Support

The GrayEasy® technology successfully produces a HDMITM 1.3 compatible, 12-bit grayscale display system without any additional upgrade cost. The built-in 12-bit to 12-bit Look-Up-Table (LUT) for DICOM calibration ensures the quality of grayscale images.

Uniform Luminance

Uniform luminance is especially critical for diagnostic applications and we have set a high standard for the uniformity of every medical monitor. Our special testing equipment ensures every customer gets the medical monitors with best uniformity for precise diagnostic results.



Display Mode Auto-Detection

PACSmate medical monitors have built-in auto-detection technology which identifies different graphic cards automatically and self adjusts the mode fit with the specific graphic card.

Medical Diagnostic Monitor

Color Diagnostic Monitor



MMD-4300C

30", 4MP diagnostic color display

Single 4MP in color mode
Dual-link DVI-D
2560 x 1600

Single 4MP in grayscale mode
Dual-link DVI-D
2560 x 1600

- 30" color TFT LCD
- 4MP-2560(H) x 1600(V)
- Max. luminance: 370cd/m²
Max. calibrated luminance: 250cd/m²
- Built-in front sensor for performance testing and auto-dimming function
- Selectable Gamma 1.8, 2.0, 2.2 and DICOM calibration
- Single 4MP and dual 2MP viewing setups
- Intelligent display mode auto adjustment with graphic card auto detection
- Ready for Deep color and HDMI™ 1.3 with GrayEasy® technology and 30-bit color dithering
- Intelligent color-to-gray conversion for grayscale applications
- IPXX / IPX2 compliance

High-Resolution Color Monitor	Anewtech MMD-4300C 30-bit 4MP	Anewtech MMD-3213CH 30-bit 3MP	Anewtech MMD-2213CH 30-bit 2MP
LCD Size	30"	21.3"	21.3"
Resolution	2560 x 1600	2048 x 1536	1600 x 1200
Max. Luminance	Typical : 370cd/m ² Calibrated: 250cd/m ²	Typical : 800cd/m ² Calibrated: 550cd/m ²	Typical : 950cd/m ² Calibrated: 550cd/m ²

MMD-4300C is implemented with the VESA DDC/CI protocol and the standard VESA Monitor Control Command Set (MCCS), the universal communication interface, enabling remote control management through network. MMD-4300C allows easier two-way communications with the host PC through only DVI cable, instead of additional serial or USB cables. Through DDC/CI protocol, the software OSD manages the MMD-4300C remotely. PACSmate also provides software OSD customization services with command library and customer defined MSSC command programming.

Various software OSD functions:

- Power on/off
- Luminance selection
- Display mode selection: 4MP/2MP, color/monochrome
- DICOM/ Gamma Look-Up-Table selection
- Gamma and color temperature selection

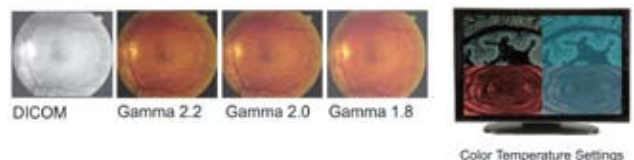
Auto-Dimming for Ambient Light Adjustment

The auto-dimming function helps create better diagnostic experience under proper light condition and extend backlight lifetime.



User Selectable Gamma Settings & Color Temperature Settings

Flexible Gamma settings and color temperature settings for side-by-side image comparison in dual-viewing modes.



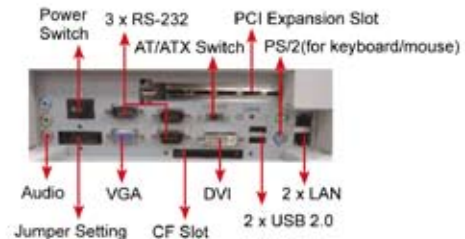
- 1 Industrial Computer
- 2 Compact PCI
- 3 Embedded Computer
- 4 Panel PC/ LCD Monitor
- 5 Human Machine Interface
- 6 Digital Advertising
- 7 Serial & Wireless Connectivity
- 8 Digital Video Surveillance
- 9 Network Security Appliance
- 10 Data Acquisition & Control
- 11 Industrial RFID
- 12 Industrial Ethernet Switch
- 13 Medical PC
- 14 Power Supply
- 15 Accessories

Medical PC

Medical Panel PC



- 17" all-in-one medical panel PC
- Multiple I/O design for super connectivity with medical peripherals
- Various expansion slots for powerful upgrade advantage
- Advanced 802.11a /b/ g/ n wireless network advantage
- IP 65 dustproof and waterproof front panel
- User friendly touch screen



All-in-one Panel PC	Anewtech POC-517A-GM45	Anewtech POC-415A/417A/419A-915	Anewtech POC-417B/419B-965
LCD Size	17"	15" / 17" / 19"	17" / 19"
CPU	Intel® Core™ 2 Duo Socket P (T9400-2.53G / T7500-2.2G / P8400-2.26G)	1.0 GHz Intel® Celeron® M with 512 KB L2 cache (Celeron® M 373)	Intel® Core™ 2 Duo Socket P (T7500-2.2G / Celeron® M 550-2.0G)
Chipset	Intel® GM45 + ICH9M	Intel® 910GML + ICH6M	Intel® GME965 + ICH8M
RAM	2 x 2.0 GB (max.) DDR2 SO-DIMM	2 x 1.0 GB (max.) DDR2 SO-DIMM	2 x 2.0 GB (max.) DDR2 SO-DIMM
Power In	DC 12V input	DC 12V Input	DC 12V Input
All-in-one Panel PC	Anewtech POC-3174A-A310	Anewtech POC-3174B-A320	Anewtech POC-3174B-A330
LCD Size	17"	17"	17"
CPU	2.0 GHz Intel® Pentium® M 760	Intel® Core™ 2 Duo Socket P (T7500-2.2G/Celeron® M 550-2.0G)	2.0 GHz Intel® Pentium® M 760
Chipset	Intel® 915GM + ICH6M	Intel GME965 + ICH8M	Intel® 915GM + ICH6M
RAM	2 x 1.0 GB (max.) DDR2 SO-DIMM	2 x 2.0 GB (max.) DDR2 SO-DIMM	2 x 1.0 GB (max.) DDR2 SO-DIMM
Power In	AC 110V~240V Input	DC 12V Input	DC 12V Input

Application

