



4

Panel PC/ LCD Monitor

Industrial Panel PC	86
Fanless Panel PC	91
All-in-One Panel PC	92
Afolux Panel PC	93
RFID Panel PC	98
POS Panel PC	99
IBX POS PC Series	102
Slim Panel PC	104
Vehicle Mount Panel PC	105
Industrial LCD Monitor	106
Industrial Workstation	108
LCD KVM Switch	110

Panel PC/ LCD Monitor

Industrial Panel PC

AMD® Platform



Model Name	Anewtech PPC-2706GHS	Anewtech PPC-2708GHS	Anewtech PPC-2710GS	Anewtech PPC-2712GS
LCD Size	6.5" TFT LCD	8.4" TFT LCD	10.4" TFT LCD	12.1" TFT LCD
Max. Resolution	640 x 480	800 x 600	800 x 600	1024 x 768
Brightness	400 cd/m ²	400 cd/m ²	230 cd/m ² or 400 cd/m ²	450 cd/m ²
LCD Color	262K	262K	262K	262K
Pixel Pitch	0.207	0.213	0.264	0.213
Contrast Ratio	450:1	500:1	500:1	700:1
Viewing Angle (H-V)	120/ 100	120 / 100	120/100	160 / 160
Backlight MTBF	50000hrs	50000hrs	20000hrs (50000hrs)	50000hrs
CPU	AMD LX800	AMD LX800	AMD LX800	AMD LX800
RAM	1 GB (max.) 333/400 MHz DDR SO-DIMM	1 GB (max.) 333/400 MHz DDR SO-DIMM	1 GB (max.) 333/400 MHz DDR SO-DIMM	1 GB (max.) 333/400 MHz DDR SO-DIMM
I/O Ports	1 x RS-232 ports 2 x USB 2.0 ports 1 x PS/2 ports (KB/MS) 1 x VGA out 2 x LAN 1 x Audio (Line-out) 1 x IDE 2 x SATA	2 x RS-232 ports (one for optional touch screen) 2 x USB 2.0 ports 1 x PS/2 port (KB/MS) 1 x VGA out 2 x LAN 3 x Audio (Line-in, Line-out, MIC-in) 1 x IDE 2 x SATA	2 x RS-232 port 2 x USB 2.0 port 1 x PS/2 port (KB/MS) 1 x Line-out, 1 x VGA out 2 x LAN	2 x RS-232 port 2 x USB 2.0 port 1 x PS/2 port (KB/MS) 1 x Line-out, 1 x VGA out 2 x LAN
SSD	CF Type II	CF Type II	CF Type II	CF Type II
Expansion Slot	N/A	N/A	N/A	N/A
HDD Drive Bay	1 x 2.5" SATA/ IDE HDD	1 x 2.5" SATA/ IDE HDD	1 x 2.5" IDE HDD	1 x 2.5" IDE HDD
FDD Drive Bay	N/A	N/A	N/A	N/A
CD-ROM Drive Bay	N/A	N/A	N/A	N/A
Construction Front Panel	Aluminum	Aluminum	Aluminum	Aluminum
Construction Chassis	Heavy-duty Steel	Heavy-duty Steel	Heavy-duty Steel	Heavy-duty Steel
Power Supply	60W AC Adapter	60W AC Adapter	60W AC Adapter	60W AC Adapter
Mounting	Stand/ Rack/ Wall/ Panel/ Arm/ Din	Stand/ Rack/ Wall/ Panel/ Arm/ Din	Stand / Rack / Wall / Panel / Arm	Stand / Rack / Wall / Panel / Arm
Color	Silver (PANTONE 8001C)	Silver (PANTONE 8001C)	Silver (PANTONE 8001C)	Silver (PANTONE 8001C)
Operation Temperature	0°C ~ 50°C	0°C ~ 50°C	0°C ~ 50°C	0°C ~ 50°C
Dimensions (WxHxD) (mm)	183 x 143 x 62.6	244 x 178 x 67	311.5 x 242 x 55	340 x 260 x 60.4
Weight	1.4/3.4 kg	2.2/4.4 kg	2.7/4.9 kg	3.9/5.4 kg
Front Panel Protection	IP 65 compliant	IP 65 compliant	IP 65 compliant	IP 65 compliant
Touch Screen	Resistive Type 4-wire with RS-232 Interface	Resistive Type 4-wire with RS-232 Interface	Resistive Type 5-wire with RS-232 interface	Resistive Type 5-wire with RS-232 interface

Panel PC/ LCD Monitor

Industrial Panel PC Intel® Pentium® M Platform



Model Name	Anewtech PPC-3708GHS	Anewtech PPC-3710GHS	Anewtech PPC-3712GS	Anewtech PPC-5350GS
LCD Size	8.4" TFT LCD	10.4" TFT LCD	12.1" TFT LCD	15" TFT LCD
Max. Resolution	800 x 600	800 x 600	800 x 600 or 1024 x 768	1024 x 768
Brightness	400 cd/m ²	230 cd/m ² or 400 cd/m ²	400 cd/m ² (450 cd/m ²)	350 cd/m ²
LCD Color	262K	262K	262K	262K
Pixel Pitch	0.213	0.264	0.240	0.297
Contrast Ratio	500:1	500:1	500:1 (700:1)	400:1
Viewing Angle (H-V)	120 / 100	120/ 100	140/110 (160/160)	120/100
Backlight MTBF	50000hrs	20000hrs (50000hrs)	50000hrs	50000hrs
CPU	Pentium® M/ Celeron® M/ ULV Celeron® M 1GHz/800MHz	Pentium® M / Celeron® M /ULV Celeron® M 1GHz/800MHz	Pentium® M / Celeron® M /ULV Celeron® M 1GHz/800MHz	Pentium® M/ Celeron® M/ ULV Celeron® M 1GHz/800MHz
RAM	1 GB (max.) 266/200 MHz DDR SO-DIMM	1 GB (max.) 266/200 MHz DDR SO-DIMM	1 GB (max.) 266/200 MHz DDR SO-DIMM	2 x DDR 266/333 DIMM socket up to 2GB
I/O Ports	1 x RS-232/422/485 port 2 x RS-232 port 4 x USB 2.0 port 1 x PS/2 ports (KB/MS) 1 x LPT 1 x VGA out 1 x LAN 3 x Audio (Line-in, Line-out, MIC-in) 1 x IDE 2 x SATA	1 x RS-232/422/485 port 2 x RS-232 port 4 x USB 2.0 port 1 x PS/2 ports (KB/MS) 1 x LPT 1 x VGA out 1 x LAN 3 x Audio (Line-in, Line-out, MIC-in) 1 x IDE 2 x SATA	1 x RS-232/422/485 port 3 x RS-232 port 4 x USB 2.0 port 1 x PS/2 ports (KB/MS) 1 x LPT 1 x VGA out 1 x LAN 3 x Audio (Line-in, Line-out, MIC-in) 1 x IDE 2 x SATA	1 x RS-232/422/485 port 4 x RS-232 ports 4 x USB 2.0 ports 2 x PS/2 ports (KB/MS) 1 x VGA out 1 x DVI 2 x LAN 3 x Audio (Line-in, Line-out, MIC-in) 2 x IDE 2 x SATA
SSD	CF Type II	CF Type II	CF Type II	CF Type II
Expansion Slot	-	-	-	1 x PCI slot 1 x Mini-PCI socket 1 x PCMCIA socket (support 32-bit CardBus)
HDD Drive Bay	1 x 2.5" SATA/ IDE HDD	1 x 2.5" SATA/ IDE HDD	1 x 2.5" SATA/ IDE HDD	1 x 2.5" SATA/ IDE HDD
FDD Drive Bay	-	-	-	N/A
CD-ROM Drive Bay	-	-	1 x Slim CD-ROM	1 x Slim CD-ROM
Construction Front Panel	Aluminum	Aluminum	Aluminum	Aluminum
Construction Chassis	Heavy-duty Steel	Heavy-duty Steel	Heavy-duty Steel	Heavy-duty Steel
Power Supply	80W AC Adapter for CPU socket 479 model 55W AC Adapter for BGA model	80W AC Adapter for CPU socket 479 model 55W AC Adapter for BGA model	80W AC Adapter for CPU socket 479 model 55W AC Adapter for BGA model	180W ATX Power
Mounting	Stand/ Rack/ Wall/ Panel/ Arm	Stand/ Rack/ Wall/ Panel/ Arm	Stand/ Rack/ Wall/ Panel/ Arm	Stand/ Rack/ Wall/ Panel/ Arm
Color	Silver (PANTONE 8001)	Silver (PANTONE 8001)	Silver (PANTONE 8001)	Silver (PANTONE PMS-8001)
Operation Temperature	0°C ~ 50°C	0°C ~ 50°C	0°C ~ 50°C	0°C ~ 50°C
Dimensions (WxHxD) (mm)	244 x 178 x 75.2	311.5 x 242 x 72.8	340 x 260 x 73.4	410 x 309 x 110
Weight	2.2/4.4 kg	3.4/5.8 kg	6/8 kg	8/12 kg
Front Panel Protection	IP 65 compliant	IP 65 compliant	IP 65 compliant	IP 65 compliant
Touch Screen	Resistive Type 4-wire with RS-232 Interface	Resistive Type 5-wire with RS-232 Interface	Resistive Type 5-wire with RS-232 Interface	Resistive Type 5-wire with RS-232 Interface

- 1 Industrial Computer
- 2 Compact PCI
- 3 Embedded Computer
- 4 Panel PC/ LCD Monitor
- 5 Human Machine Interface
- 6 Digital Advertising
- 7 Serial & Wireless Connectivity
- 8 Digital Video Surveillance
- 9 Network Security Appliance
- 10 Data Acquisition & Control
- 11 Industrial RFID
- 12 Industrial Ethernet Switch
- 13 Medical PC
- 14 Power Supply
- 15 Accessories

Panel PC/ LCD Monitor

Industrial Panel PC

Intel® Pentium® Platform



Model	Anewtech PPC-5150GS	Anewtech PPC-5170GS	Anewtech PPC-5190GS	Anewtech PPC-5190A
LCD Size	15" TFT LCD	17" TFT LCD	19" TFT LCD	19" TFT LCD
Max. Resolution	1024 x 768	1280 x 1024	1280 x 1024	1280 x 1024
Brightness	350 cd/m ²	300 cd/m ²	300 cd/m ²	300 cd/m ²
LCD Color	262K	16.2M	16.2M	16.2M
Pixel Pitch	0.297	0.264	0.264	0.294
Contrast Ratio	400:1	500:1	700:1	800:1
Viewing Angle	120/100	140/130	140/130	160/160
Backlight MTBF	50000hrs	50000hrs	50000hrs	50000hrs
CPU	Pentium® 4/ Celeron® D	Pentium® 4/ Celeron® D	Pentium® 4/ Celeron® D	Intel® Core™2 Duo Pentium® D/4/Celeron® D
RAM	1 GB (max.) 333/400 MHz DDR SO-DIMM	1 GB (max.) 333/400 MHz DDR SO-DIMM	1 GB (max.) 333/400 MHz DDR SO-DIMM	2 x 2 GB (max.) DDR2 DIMM (system max. 4 GB)
I/O Ports	1 x RS-232/422/485 port 4 x RS-232 ports 4 x USB 2.0 ports 2 x PS/2 ports (KB/MS) 1 x LPT 1 x VGA out 2 x LAN 3 x Audio (Line-in, Line-out, MIC-in) 2 x IDE 2 x SATA	1 x RS-232/422/485 port 4 x RS-232 ports 6 x USB 2.0 ports 2 x PS/2 ports (KB/MS) 1 x LPT 1 x VGA out 2 x LAN 3 x Audio (Line-in, Line-out, MIC-in) 2 x IDE 2 x SATA	1 x RS-232/422/485 port 4 x RS-232 ports 6 x USB 2.0 ports 2 x PS/2 ports (KB/MS) 1 x LPT 1 x VGA out 2 x LAN 3 x Audio (Line-in, Line-out, MIC-in) 2 x IDE 2 x SATA	4 x RS-232 1 x RS-232/422/485 1 x VGA 1 x Print port 2 x LAN 4 x USB 3 x Audio (Line-in, Line-out, Mic-in)
SSD	CF Type II	CF Type II	CF Type II	CF Typell
Expansion Slot	1 x PCI	1 x PCI	1 x PCI	1 x PCI
HDD Drive Bay	1 x 2.5" SATA/ IDE HDD w/ Anti-Shock or 2 x 2.5" SATA/IDE HDD w/o Anti-shock	1 x 2.5" SATA/IDE HDD w/ Anti-shock or 2 x 2.5" SATA/IDE HDD w/o Anti-shock	1 x 2.5" SATA/IDE HDD w/ Anti-shock or 2 x 2.5" SATA/IDE HDD w/o Anti-shock	1 x 2.5" HDD bay w/ anti-shock
FDD Drive Bay	1 x Slim FDD	1 x Slim FDD	1 x Slim FDD	N/A
CD-ROM Drive Bay	1 x Slim CD-ROM	1 x Slim CD-ROM	1 x Slim CD-ROM	1 x Slim type CD-ROM
Construction Front Panel	Aluminum	Aluminum	Aluminum	Aluminum
Construction Chassis	Heavy-duty Steel	Heavy-duty Steel	Heavy-duty Steel	Heavy-duty Steel
Power Supply	180W ATX Power	180W ATX Power	180W ATX Power	250W ATX Power
Mounting	Stand/ Rack/ Wall/ Panel/ Arm	Stand/ Rack/ Wall/ Panel/ Arm	Stand/ Rack/ Wall/ Panel/ Arm	Stand/Rack/Wall/Panel/Arm
Color	Silver (PANTONE PMS-8001)	Silver (PANTONE PMS-8001)	Silver (PANTONE PMS-8001)	Cool Gray (PANTONE Cool Gray 7C)
Operation Temperature	0°C ~ 50°C	0°C ~ 50°C	0°C ~ 50°C	0°C~50°C
Dimensions (WxHxD) (mm)	410 x 309 x 110	452 x 356 x 110	452 x 356 x 110	483 x 399 x 116
Weight	7/11 kg	8/12 kg	8/12 kg	8/12 kg
Front Panel Protection	IP 65 compliant	IP 65 compliant	IP 65 compliant	IP 65 compliant
Touch Screen	Resistive Type 5-wire with RS-232 Interface	Resistive Type 5-wire with RS-232 Interface	Resistive Type 5-wire with RS-232 Interface	Resistive Type 5-Wire with RS-232 Interface

Panel PC/ LCD Monitor

Industrial Panel PC

Core™ 2 Duo Type Panel PC



Model Name	Anewtech PPC-3708GHS	Anewtech PPC-3710GHS	Anewtech PPC-3712GXS	Anewtech PPC-5150A	Anewtech PPC-5170A
LCD Size	8.4" TFT LCD	10.4" TFT LCD	12.1" TFT LCD	15" TFT LCD	17" TFT LCD
Max. Resolution	800 x 600	800 x 600	1024 x 768	1024 x 768	1280 x 1024
Brightness	400 cd/m ²	400 cd/m ²	450 cd/m ²	350 cd/m ²	300 cd/m ²
LCD Color	262K	262K	262K	16.2M	16.7M
Pixel Pitch	0.213	0.264	0.240	0.297	0.264
Contrast Ratio	500:1	500:1	700:1	700:1	800:1
Viewing Angle (H-V)	120/100	120/100	160/160	140/125	160/160
Backlight MTBF	50000hrs	50000hrs	50000hrs	50000hrs	50000hrs
CPU	Socket M Intel® Core™2 Duo/Core™ Duo/Core™ Solo/Celeron® M	Socket M Intel® Core™2 Duo, Core™ Duo/Solo/Celeron® M	Socket M Intel® Core™2 Duo, Core™ Duo/Solo/Celeron® M	Intel® Core™2 Duo Pentium® D/4/ Celeron® D	Intel® Core™2 Duo Pentium® D/4/ Celeron® D
RAM	1 x 1 GB (max.) 400/533/667 MHz DDR2 SO-DIMM	1 x 1 GB (max.) 400/533/667 MHz DDR2 SO-DIMM	1 x 1 GB (max.) 400/533/667 MHz DDR2 SO-DIMM	2 x 2 GB (max.) DDR2 DIMM (system max. 4 GB)	2 x 2 GB (max.) DDR2 DIMM (system max. 4 GB)
I/O Ports	3 x RS-232 1 x RS-232/422/485 2 x USB 1 x VGA 2 x LAN 3 x Audio (Line-in, Line-out, MIC-in) 1 x IDE 2 x SATA	3 x RS-232 1 x RS-232/422/485 2 x USB 1 x VGA 2 x LAN 3 x Audio (Line-in, Line-out, MIC-in) 1 x IDE 2 x SATA	3 x RS-232 1 x RS-232/422/485 2 x USB 1 x VGA 2 x LAN 3 x Audio (Line-in, Line-out, MIC-in) 1 x IDE 2 x SATA	4 x RS-232 1 x RS-232/422/485 1 x VGA 1 x Print port 2 x LAN 4 x USB 3 x Audio (Line-in, Line-out, Mic-in)	4 x RS-232 1 x RS-232/422/485 1 x VGA 1 x Print port 2 x LAN 4 x USB 3 x Audio (Line-in, Line-out, Mic-in)
SSD	CF Type II	CF Type II	CF Type II	CF Type II	CF Type II
Expansion Slot	1 x PCIe mini Card	1 x PCIe mini Card	1 x PCIe mini Card	1 x PCI	1 x PCI
HDD Drive Bay	1 x 2.5" HDD bay w/ anti-shock	1 x 2.5" HDDbay w/ anti-shock	1 x 2.5" HDD bay w/ anti-shock	1 x 2.5" HDD bay w/ anti-shock	1 x 2.5" HDD bay w/ anti-shock
FDD Drive Bay	N/A	N/A	N/A	N/A	N/A
CD-ROM Drive Bay	N/A	N/A	1 x Slim type CD-ROM	1 x Slim type CD-ROM	1 x Slim type CD-ROM
Construction Front Panel	Aluminum	Aluminum	Aluminum	Aluminum	Aluminum
Construction Chasis	Heavy-duty Steel	Heavy-duty Steel	Heavy-duty Steel	Heavy-duty Steel	Heavy-duty Steel
Power Supply	80W AC Adapter for CPU socket 479 model	80W AC Adapter for CPU socket 479 model	80W AC Adapter for CPU socket 479 model	250W ATX Power	250W ATX Power
Mounting	Stand/Rack/Wall/ Panel/Arm	Stand/Rack/Wall/ Panel/Arm	Stand/Rack/Wall/ Panel/Arm	Stand/Rack/Wall/ Panel/Arm	Stand/Rack/Wall/ Panel/Arm
Color	Silver (PANTONE 8001C)	Silver (PANTONE 8001C)	Silver (PANTONE 8001C)	Cool Gray (PANTONE Cool Gray 7C)	Cool Gray (PANTONE Cool Gray 7C)
Operating Temperature	0°C~50°C	0°C~50°C	0°C~50°C	0°C~50°C	0°C~50°C
Dimensions	244 x 178 x 80	311.5 x 242 x 72.8	340 x 260 x 73.4	410 x 309 x 110	452 x 356 x 110
Weight	2.2/4.4 kg	3.4/5.8 kg	6/8 kg	7/11 kg	8/12 kg
Front Panel Protection	IP 65 compliant	IP 65 compliant	IP 65 compliant	IP 65 compliant	IP 65 compliant
Touch Screen	Resistive Type 4-Wire with RS-232 Interface	Resistive Type 5-Wire with RS-232 Interface	Resistive Type 5-Wire with RS-232 Interface	Resistive Type 5-Wire with RS-232 Interface	Resistive Type 5-Wire with RS-232 Interface

- 1 Industrial Computer
- 2 Compact PC
- 3 Embedded Computer
- 4 Panel PC/ LCD Monitor
- 5 Human Machine Interface
- 6 Digital Advertising
- 7 Serial & Wireless Connectivity
- 8 Digital Video Surveillance
- 9 Network Security Appliance
- 10 Data Acquisition & Control
- 11 Industrial RFID
- 12 Industrial Ethernet Switch
- 13 Medical PC
- 14 Power Supply
- 15 Accessories

Panel PC/ LCD Monitor

Industrial Panel PC

Intel® Atom™ Platform



Model Name	Anewtech PPC-3708A/N270	Anewtech PPC-3710A/N270	Anewtech PPC-3712A/N270
LCD	LCD Size : 8.4" Resolution : 800 x 600 (SVGA) Brightness : 400 cd/m2 Contrast Ratio : 450:1 Viewing Angle (H-V) : 120o/100o Backlight MTBF : 50,000hrs	LCD Size : 10.4" Resolution : 800 x 600 (SVGA) Brightness : 400 cd/m2 Contrast Ratio : 500:1 Viewing Angle (H-V) : 120o/100o Backlight MTBF : 50,000hrs	LCD Size : 12.1" Resolution : 1024 x 768 (XGA) Brightness : 450 cd/m2 Contrast Ratio : 700:1 Viewing Angle (H-V) : 160o/160o Backlight MTBF : 50,000hrs
CPU Board	NANO-945GSE-N270	NANO-945GSE-N270	NANO-945GSE-N270
Memory	One 200-pin 533MHz DDR2 SDRAM SO-DIMM supported (system max. 2GB)	One 200-pin 533MHz DDR2 SDRAM SO-DIMM supported (system max. 2GB)	One 200-pin 533MHz DDR2 SDRAM SO-DIMM supported (system max. 2GB)
CPU	Intel® Atom™ Processor N270 1.6GHz with a 533Mhz FSB	Intel® Atom™ Processor N270 1.6GHz with a 533Mhz FSB	Intel® Atom™ process N270 1.6GHz CPU
Chipset	Intel® 945GSE/ICH7M	Intel® 945GSE/ICH7M	IntelR 945GSE/ICH7M
VGA	Intel® 945GSE supports dual display	Intel® 945GSE supports dual display	IntelR 945GSE supports dual display
SSD	CF Type II	CF Type II	CF Type II
Drive Bay	1 x 2.5" SATA HDD Bay with Anti-Shock	1 x 2.5" SATA HDD Bay with Anti-Shock	1 x 2.5" SATA HDD Bay with Anti-Shock 1 x Slim Type CD-ROM Bay
Audio	5.1 channel audio kit with Realtek ALC655 AC'97 codec	5.1 channel audio kit with Realtek ALC655 AC'97 codec	5.1 channel audio kit with Realtek ALC655 AC97 codec
Ethernet	Dual PCIe Realtek 8111CP GbE chipsets	Dual PCIe Realtek 8111CP GbE chipsets	Dual PCIe Realtek 8111CP GbE chipsets
I/O	3 x RS-232 1 x RS-232/422/485 2 x USB 2.0 1 x VGA 2 x Giga LAN Port 3 x Audio (Line-in, Line-out, MIC-in) 1 x PS/2 for KB/MS 1 x Power Switch 1 x Power Jack (Lockable)	3 x RS-232 1 x RS-232/422/485 2 x USB 2.0 1 x VGA 2 x Giga LAN Port 3 x Audio (Line-in, Line-out, MIC-in) 1 x PS/2 for KB/MS 1 x Power Switch 1 x Power Jack (Lockable)	3 x RS-232 1 x RS-232/422/485 2 x USB 2.0 1 x VGA 2 x Giga LAN Port 3 x Audio (Line-in, Line-out, MIC-in) 1 x PS/2 for KB/MS 1 x Power Switch 1 x Power Jack (Lockable)
Expansion Slot	1 x PCIe mini card for 802.11 b/g wireless LAN module (optional)	1 x PCIe mini card for 802.11 b/g wireless LAN module (optional)	1 x PCIe mini card for 802.11 b/g wireless LAN module (optional)
Touch Screen	4-wire resistive type with RS-232 interface	5-wire resistive type with RS-232 interface	5-wire resistive type with RS-232 interface
Power Supply	Power Adapter - P/N: 63000-FSP0601AD101C746-RS - 60W Power Adapter - Input: 90VAC~264VAC, 50/60Hz - Output: 12VDC	Power Adapter - P/N: 63000-FSP0601AD101C746-RS - 60W Power Adapter - Input: 90VAC~264VAC, 50/60Hz - Output: 12VDC	Power Adapter - P/N: 63000-FSP0601AD101C746-RS - 60W Power Adapter - Input: 90VAC~264VAC, 50/60Hz - Output: 12VDC
Operating Temp	- 10°C~50°C with CF Card 0°C~50°C with HDD	- 10°C~50°C with CF Card 0°C~50°C with HDD	-10°C ~50°C with CF Card 0°C~50°C with HDD
Storage Temp	- 20°C~60°C	- 20°C~60°C	- 20°C~60°C
Vibration	5~17Hz 0.1" double amplitude displacement 17~640 Hz 1.5G acceleration peak to peak	5~17Hz 0.1" double amplitude displacement 17~640 Hz 1.5G acceleration peak to peak	5~17Hz 0.1" double amplitude displacement 17~640 Hz 1.5G acceleration peak to peak
Shock	10G acceleration peak to peak. (11ms)	10G acceleration peak to peak. (11ms)	10G acceleration peak to peak. (11ms)
Relative Humidity	5% ~ 95% @ 60°C, non-condensing	5% ~ 95% @ 60°C, non-condensing	5% ~ 95% @ 60°C, non-condensing
Net / Gross Weight	2.2 kg / 4.4 kg	3.4 kg / 5.8 kg	6 kg / 8 kg
Dimension	244 x 178 x 80.2 mm	311.5 mm x 242 mm x 77.8 mm	Meets CE, FCC, CB, CCC
General Specification	Meets CE, FCC, CB, CCC	Meets CE, FCC, CB, CCC	340 mm x 276.7 mm x 73.4 mm
Front Panel Protection	IP 65 Compliant	IP 65 Compliant	IP 65 Compliant

Panel PC/ LCD Monitor

Fanless Panel PC



Model Name	Anewtech PPC-L127T	Anewtech GOT-3150T /TL	Anewtech GOT- 3840TL	Anewtech GOT-3571T
LCD Size	12.1" TFT LCD	15" XGA TFT LCD	8.4" SVGA TFT LCD	5.7" VGA TFT LCD
Max. Resolution	800 x 600	1024 x 768	800 x 600	640 x 480
Brightness	400 cd/m2	450 nits (GOT-3150T) 260 nits (GOT-3150TL)	200 nits	400 nits
LCD Color	262 K	-	-	-
Pixel Pitch	0.3075 x 0.3075	-	-	-
Contrast Ratio	-	-	-	-
Viewing Angle	70° (left), 70° (right), 60° (up), 50° (down)	(H)150° (V)150°	(H)120° (V)100°	(H)120° (V)100°
Backlight MTBF	50,000 hrs	-	-	-
CPU	Intel ULV Celeron M 1.0GHz	ULV Intel® Celeron® M processor 1 GHz (GOT-3150T) ULV Intel® Celeron® M processor 600 MHz/512K (GOT-3150TL)	VIA Eden 667MHz processor onboard	AMD LX800 500 MHz
RAM	Max. 1GB DDR SDRAM	Max. 1 GB, DDR DIMM	Max. 512MB, 1x SDRAM SODIMM	Max. 1GB DDR DIMM
I/O Ports	3 x RS-232 1 x RS-232/422/485 1 x LPT 6 x USB 2.0 1xPS/2 Keyboard/Mouse	2 x D-sub 9-pin for RS-232 1 x D-sub 9-pin for RS-232- /422/485 1 x D-sub 15-pin(female) for VGA output 1 x audio (Line-out) 1 x MiniPCI 2 x built-in speaker	2 x D-sub 9-pin for RS-232 1 x D-sub 9-pin for RS-232/422/485 1 x D-sub 15-pin(female) for VGA output 2 x USB 2.0 1xPS/2 Keyboard/Mouse	1 x D-sub 9-pin for RS-232 1 x D-sub 9-pin for RS-232- /422/485 1 x 10/100 base T (RJ-45) Ethernet 1 x audio (Line-out)
SSD	CF Type II	CF	CF	CF
Expansion Slot	1 x PCI 1 x Mini PCI	1 x Mini PCI	1 x PC/104	1 x PCI 1 x PC/104
HDD Drive Bay	1 x 2.5" HDD	1 x 2.5" HDD	1 x 2.5" HDD	-
Construction Front Panel	Aluminium	-	-	-
Construction Chassis	Aluminium	-	-	-
Power Supply	12 V - 25 V	16~28VDC	16~28V	24 VDC
Color	Black	Black	Black	Black
Operation Temperature	0 ~ 50° C	-20°C~55°C (-4°~131°F) (GOT- 3150T) 0°~50°C (32°~122°F) (GOT-3150TL)	-10°~50°C	0 ~ 45° C
Dimension (WxHxD)	340.5 x 269.3 x 70.5 mm	396 x 64.9 x 312mm	280 x 61 x 225mm	208.5 x 59.5 x 167.3mm
Weight	3.25 kg	6.5 kg	1.8kg (4 lb)	2 kg
Front Panel Protection	IP65	-	-	-
Touch Screen	Analog Resistive	Yes	Yes	Yes

- 1 Industrial Computer
- 2 Compact PCI
- 3 Embedded Computer
- 4 Panel PC/ LCD Monitor
- 5 Human Machine Interface
- 6 Digital Advertising
- 7 Serial & Wireless Connectivity
- 8 Digital Video Surveillance
- 9 Network Security Appliance
- 10 Data Acquisition & Control
- 11 Industrial RFID
- 12 Industrial Ethernet Switch
- 13 Medical PC
- 14 Power Supply
- 15 Accessories

Panel PC/ LCD Monitor

All-in-One Panel PC



Model Name	Anewtech PPC-123T	Anewtech PPC-154T	Anewtech PPC-177T
LCD Size	12.1" TFT LCD	15" TFT LCD	17" TFT LCD
Max. Resolution	800 x 600	1024 x 768	1280 x 1024
Brightness	300 cd/m2	350 cd/m2	300 cd/m2
LCD Color	262 K	262 K	262 K
Pixel Pitch	0.31 x 0.31	0.297 x 0.297	0.264 x 0.264
Contrast Ratio	-	400 : 1	800:1
Viewing Angle	90°	60° (left), 60° (right), 40° (up), 60° (down)	80° (left), 80° (right), 80° (up), 80° (down)
Backlight MTBF	50,000 hrs	50,000 hrs	50,000 hrs
CPU	Socket 370 based Intel Pentium® III / Celeron™ up to 1.26 GHz	Socket 478 Intel based Mobile Intel Pentium® 4 up to 3.06 GHz	Intel® Core™ 2 Duo
RAM	Max 1 GB SDRAM, DIMM x 2	Max 2 GB DDR SDRAM, DIMM x 2	Up to 4 GB of 667 MHz DDR2 SODIMM system memory (socket x 2)
I/O Ports	3 x RS-232 1 x RS-232/422/485 1 x LPT 2 x USB 2.0	1 x RS-232 1 x RS-232/422/485 1 x LPT 4 x USB 2.0	3 x RS-232 1 x RS-232/422/485 4 x USB 2.0 ports 1 x PS/2 mouse and keyboard interface MIC in / Line in / Line out port, 1W speakers 2 x Gigabit Ethernet ports 1 x D-SUB VGA port
SSD	2 x PCMCIA Type II	2 x PCMCIA Type II	
Expansion Slot	1 x PCI	1 x PCI 1 x Mini PCI	1 x PCIe
HDD Drive Bay	1 x 2.5" HDD	1 x 2.5" HDD	1 x 2.5" HDD
FDD Drive Bay	Supports 720 KB / 1.44 MB FDD	Supports 720 KB / 1.44 MB FDD	Optional SATA 8X or above DVD+/-RW Drive
CD-ROM Drive Bay	Compact 24X or above	Compact 24X or above	Optional SATA DVD/CD-RW 8D/24W/24E/24R or above
Construction Front Panel	Aluminium	Aluminium	Aluminium
Construction Chassis	Aluminium	Aluminium	Aluminium
Power Supply	100 ~ 250 VAC	100~240 VAC	100 ~ 240 VAC
Mounting	-	-	-
Color	Sliver	Sliver	Sliver
Operation Temperature	0 ~ 45° C	0 ~ 45° C	0 ~ 45° C
Dimension (WxHxD)	375 x 285.5 x 104.4 mm	420 x 323.3 x 130.5 mm	442 x 362 x 111.5mm
Weight	5.2 kg	7 kg	10 kg
Front Panel Protection	IP 65/NEMA 4	IP 65/NEMA 4	IP 65/NEMA 4
Touch Screen	Analog Resistive	Analog Resistive	Analog Resistive

Panel PC/ LCD Monitor

Afolux Panel PC



AFOLUX Panel PC Series



iSMC

Watchdog Timer

RS-232 /422/485

Bluetooth

TouchScreen

IP 64

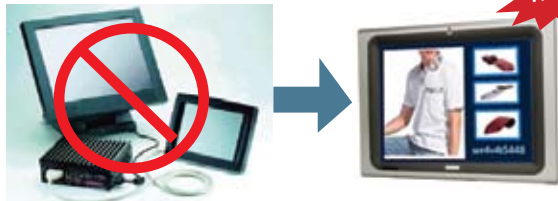
Wireless 802.11 b/g

Dual LAN

Integrated audio

GPRS

1. Multimedia Entertainment Platform



WIN!

	Traditional System	AFOLUX PPC
	Embedded system + monitor	All-in-One Unit
Building cost	High	Low
Maintenance	Complicated	Easy
Appearance	a PC with lots of cables	Simple and Luxury
Space Occupy	High	Low

(1) Stylish Design and built-in Speakers

Stylish and compact unit with two built-in 3W speakers and one audio line-out extend voice functions for Kiosks, POS and advertising applications

(2) Selectable Power Mode

AT or ATX power selection enables versatile system control and reduces maintenance costs

(3) Wireless

Data update and transmission by wireless LAN

(4) VESA Mounting Support

VESA mounting design can conveniently mount AFOLUX in any environments

(5) Built-in Bluetooth Module

Bluetooth technology rids systems of cables and allows wireless connection to peripheral devices like headphones, printers, barcode readers or game controllers.



Interactive Kiosk



Digital Signage



POS



Gaming

2. Industrial Computing Platform



Fanless Design

(1) Fanless

Fanless design reduces system noise, ideal for medical applications.

(2) IP 64 Compliant Front Panel Protection

The IP 64 front panel ensures the AFL can operate in harsh environments and that the front panel can easily be kept clean with chemical cleanser

(3) User-friendly and easily accessible platform

Resistive touch panel allows users to easily operate the system

(5) Optional HSDPA 3.5G/GPRS Module

Enabling easier access to the Internet through a WCDMA/GSM network



Medical Image Terminal



Industrial Automation



Network Security



Transportation

- 1 Industrial Computer
- 2 Compact PCI
- 3 Embedded Computer
- 4 Panel PC/ LCD Monitor
- 5 Human Machine Interface
- 6 Digital Advertising
- 7 Serial & Wireless Connectivity
- 8 Digital Video Surveillance
- 9 Network Security Appliance
- 10 Data Acquisition & Control
- 11 Industrial RFID
- 12 Industrial Ethernet Switch
- 13 Medical PC
- 14 Power Supply
- 15 Accessories

Panel PC/ LCD Monitor

Afolux Series

AMD Geode™ LX Platform



Model Name	Anewtech AFL-057A-LX	Anewtech AFL-07A-LX-R11	Anewtech AFL-08AH-LX-R11	Anewtech AFL-10A-LX	Anewtech AFL-12A-LX-R11
LCD Size	5.7"	7"	8.4"	10.4"	12.1"
Max Resolution	640 * 480	800 * 480	800 * 600	800 * 600	1024 * 768
Brightness (cd/m ²)	400	350	450	400	450
Contrast Ratio	300:1	400:1	500:1	500:1	700:1
LCD Color	262K	262K	262K	262K	262K
Pixel Pitch (mm)	0.06(H) x 0.18(V)	0.1905(H) x 0.1905(V)	0.213(H) x 0.213(V)	211.2(H) x 158.4(V)	0.240(H) x 0.240(V)
Viewing Angle	140/100	140/110	120/100	120/100	160/160
Backlight MTBF	50000 hrs	50000 hrs	50000 hrs	50000 hrs	50000 hrs
CPU	AMD Geode™ LX 800 (500MHz)	AMD Geode™ LX 800 (500MHz)	AMD Geode™ LX 800 (500MHz)	AMD Geode™ LX 800 (500MHz)	AMD Geode™ LX 800 (500MHz)
Chipset	AMD Geode™ LX 800 + AMD Geode™ CS5536	AMD Geode™ LX 800 + AMD Geode™ CS5536	AMD Geode™ LX 800 + AMD Geode™ CS5536	AMD Geode™ LX 800 + AMD Geode™ CS5536	AMD Geode™ LX 800 + AMD Geode™ CS5536
RAM	Supports one 1GB (maximum) 333MHz or 400MHz SO-DIMM	Supports one 1GB (maximum) 333MHz or 400MHz DDR SO-DIMM	Supports one 1GB (maximum) 333MHz or 400MHz SO-DIMM	Supports one 1GB (maximum) 333MHz or 400MHz SO-DIMM	Supports one 1GB (maximum) 333MHz or 400MHz SO-DIMM
I/O Ports and Switches	1 x RS-232 COM port (RJ-45) 1 x RS-232/422/485 COM port (RJ-45) 1 x RJ-45 for 10/100Mbps 2 x USB 2.0 1 x Power Switch 1 x Reset Button 1 x VGA port 1 x AT/ATX Switch	1 x RS-232 COM port 1 x RS-232/422/485 COM port 2 x RJ-45 for 10/100Mbps LAN 2 x USB 2.0 1 x Power Switch 1 x Reset Button	1 x RS-232 COM port 1 x RS-232/422/485 COM port 2 x RJ-45 for 10/100Mbps LAN 2 x USB 2.0 1 x Power Switch 1 x Reset Button	1 x RS-232 COM port 1 x RS-232/422/485 COM port 2 x RJ-45 for 10/100Mbps LAN 2 x USB 2.0 1 x Power Switch 1 x Reset Button	1 x RS-232 COM port 1 x RS-232/422/485 COM port 2 x RJ-45 for 10/100Mbps LAN 2 x USB 2.0 1 x Power Switch 1 x Reset Button
SSD	CF Type II	CF Type II	CF Type II	CF Type II	CF Type II
Watchdog Timer					
Audio	AMP 1.5W+1.5W	AMP 1.5W + 1.5W	AMP 1.5W + 1.5W	AMP 1.5W + 1.5W	AMP 1.5W + 1.5W
Expansion	1 x Wireless LAN Module (USB Interface) 1 x bluetooth module (USB Interface)	1 x Mini PCI (Wireless LAN Module) 1 x Bluetooth Module (USB Interface, Bluetooth V2.0)	1 x Mini PCI (Wireless LAN Module) 1 x Bluetooth Module (USB Interface, Bluetooth V2.0)	1 x Mini PCI (Wireless LAN Module) 1 x Bluetooth Module (USB Interface, Bluetooth V2.0)	1 x Mini PCI (Wireless LAN Module) 1 x Bluetooth Module (USB Interface, Bluetooth V2.0)
HDD Drive Bay	N/A	N/A	N/A	N/A	1 x 2.5" HDD bay/ Optional GPRS Module
Optional GPRS Module	N/A	N/A	N/A	Yes	
Construction Material	ABS + PC Plastic front frame Aluminum die casting body	ABS + PC Plastic front frame	ABS + PC Plastic front frame	ABS + PC Plastic front frame	ABS + PC Plastic front frame
LED Function	1 x Power ON/OFF LED on front panel	1 x Power ON/OFF LED on front panel	1 x Power ON/OFF LED on front panel	1 x Power ON/OFF LED on front panel	1 x Power ON/OFF LED on front panel
Mounting	Panel, Wall, Stand and Arm (VESA 75mm x 75mm)	Panel, Wall, Rack, Stand or Arm VESA 75mm x 75mm	Panel, Wall, Rack, Stand or Arm VESA 75mm x 75mm	Panel, Wall, Rack, Stand or Arm VESA 75mm x 75mm	Panel, Wall, Rack, Stand or Arm VESA 75mm x 75mm / 100 x 100mm
Front Panel Color	Gray 7539U	Gray 7539U	Gray 7539U	Gray 7539U	Gray 7539U
Dimensions (WxHxD) (mm)	180 x 135 x 55	226 x 140 x 41	234 x 184 x 42	276 x 227 x 50.7	304 x 246 x 50
Operation Temperature (°C)	0°C~50°C	0°C~50°C	0°C~50°C	0°C~50°C	0°C~50°C
Storage Temperature (°C)	-20°C~60°C	-20°C~60°C	-20°C~60°C	-20°C~60°C	-20°C~60°C
Net Weight	0.8 Kg	0.6 Kg	0.8 Kg	1.4 Kg	1.8Kg
IP Level(front panel)	IP 64	IP 64	IP 64	IP 64	IP 64
EMC	CE, FCC, CCC	CE, FCC, CCC	CE, FCC, CCC	CE, FCC, CCC	CE, FCC, CCC
Safety	UL, CB	UL, CB	UL, CB	UL, CB	UL, CB
Touch Screen	Resistive Type 4-Wire (touch controller IC is on board)	Resistive Type 4-Wire (touch controller IC is on board)	Resistive Type 4-Wire (touch controller IC is on board)	Resistive Type 5-Wire (touch controller IC is on board)	Resistive Type 5-Wire (touch controller IC is on board)
Power Adapter	P/N: 63000-FSP0361AD101C-RS Power: 36W Input: 90VAC~264VAC @ 50/60Hz Output:12VDC	P/N: 63000-FSP0361AD101C-RS Power: 36W Input: 90VAC~264VAC @ 50/60Hz Output:12VDC	P/N:63000-FSP0361AD101C-RS Power: 36W Input: 90VAC~264VAC @ 50/60Hz Output:12VDC	P/N:63000-FSP0361AD101C-RS Power: 36W Input: 90VAC~264VAC @ 50/60Hz Output:12VDC	P/N:63000-FSP0361AD101C-RS Power: 36W Input: 90VAC~264VAC @ 50/60Hz Output:12VDC
Power Requirement	12VDC	12VDC	12VDC	12VDC	12VDC
Power Consumption	15W	20W	20W	25W	29W

Panel PC/ LCD Monitor

Afolux Series Intel® 915 Platform

Model Name	Anewtech AFL-15A-915	Anewtech AFL-15B-915	Anewtech AFL-17A-915	Anewtech AFL-17B-915	Anewtech AFL-19A-915	Anewtech AFL-19B-915
LCD Size	15"	15"	17"	17"	19"	19"
Max Resolution	1024x768	1024x768	1280 x 1024	1280 x 1024	1280 x 1024	1280 x 1024
Brightness (cd/m ²)	350	350	300	300	300	300
Contrast Ratio	700:1	700:1	800:1	800:1	800:1	800:1
LCD Color	262K	262K	16.7M	16.7M	16.7M	16.7M
Pixel Pitch (mm)	0.297(H) x 0.297(V)	0.297(H) x 0.297(V)	0.264(H) x 0.264(V)	0.264(H) x 0.264(V)	0.294(H) x 0.294(V)	0.294(H) x 0.294(V)
Viewing Angle (H-V)	140(H) / 125(V)	140(H) / 125(V)	160(H) / 160(V)	160(H) / 160(V)	160(H) / 160(V)	160(H) / 160(V)
Backlight MTBF	50000 hrs	50000 hrs	50000 hrs	50000 hrs	50000 hrs	50000 hrs
CPU	Intel® Celeron® M (1.0GHz) with 512KB L2 Cache	Intel® Pentium® M Processor (up to 2.0GHz) Intel® Celeron® M processor	Intel® Celeron® M (1.0GHz) with 512KB L2 Cache	Intel® Pentium® M Processor (up to 2.0GHz) Intel® Celeron® M processor	Intel® Celeron® M (1.0GHz) with 512KB L2 Cache	Intel® Pentium® M Processor (up to 2.0GHz) Intel® Celeron® M processor
Chipset	Intel® 915GME/Intel® 910GML	Intel® 915GME	Intel® 915GME/Intel® 910GML	Intel® 915GME	Intel® 915GME/Intel® 910GML	Intel® 915GME
RAM	Supports One DDR2 SO-DIMM 1.0 GB(max.) /Two DDR2 SO-DIMM 2.0 GB (max.)	Supports two 200-pin 2GB(maximum) 400MHz or 533MHz DDR2 SO-DIMM	Supports One DDR2 SO-DIMM 1.0 GB(max.) /Two DDR2 SO-DIMM 2.0 GB (max.)	Supports two 200-pin 2GB(maximum) 400MHz or 533MHz DDR2 SO-DIMM	Supports One DDR2 SO-DIMM 1.0 GB(max.) /Two DDR2 SO-DIMM 2.0 GB (max.)	Supports two 200-pin 2GB(maximum) 400MHz or 533MHz DDR2 SO-DIMM
I/O Ports and Switches	1 x External SATA 1 x RS-232 COM port 1 x RS-232/422/485 COM port 2 x RJ-45 for GbE 4 x USB 2.0 1 x Power Switch 1 x Reset Button 1 x VGA port 1 x Audio	1 x External SATA 1 x RS-232 COM port 1 x RS-232/422/485 COM port 2 x RJ-45 for GbE 4 x USB 2.0 1 x Power Switch 1 x Reset Button 1 x VGA port 1 x Audio	1 x External SATA 1 x RS-232 COM port 1 x RS-232/422/485 COM port 2 x RJ-45 for GbE 4 x USB 2.0 1 x Power Switch 1 x Reset Button 1 x VGA port 1 x Audio	1 x External SATA 1 x RS-232 COM port 1 x RS-232/422/485 COM port 2 x RJ-45 for GbE 4 x USB 2.0 1 x Power Switch 1 x Reset Button 1 x VGA port 1 x Audio	1 x External SATA 1 x RS-232 COM port 1 x RS-232/422/485 COM port 2 x RJ-45 for GbE 4 x USB 2.0 1 x Power Switch 1 x Reset Button 1 x VGA port 1 x Audio	1 x External SATA 1 x RS-232 COM port 1 x RS-232/422/485 COM port 2 x RJ-45 for GbE 4 x USB 2.0 1 x Power Switch 1 x Reset Button 1 x VGA port 1 x Audio
SSD	CF Type II	CF Type II	CF Type II	CF Type II	CF Type II	CF Type II
Watchdog Timer	Software Programmable supports 1~255 sec. System reset					
Audio	AMP 1.5W+AMP 1.5W	AMP 3W + AMP 3W	AMP 1.5W+AMP 1.5W	AMP 3W + AMP 3W	AMP 3W+AMP 3W	AMP 3W + AMP 3W
Expansion	1 x Wireless LAN Module (Mini PCIe Interface)	1 x Wireless LAN Module (Mini PCIe Interface)	1 x Wireless LAN Module (Mini PCIe Interface)	1 x Wireless LAN Module (Mini PCIe Interface)	1 x Wireless LAN Module (Mini PCIe Interface)	1 x Wireless LAN Module (Mini PCIe Interface)
HDD Drive Bay	1 x 2.5" SATA HDD bay	1 x 2.5" SATA HDD bay	1 x 2.5" SATA HDD bay	1 x 2.5" SATA HDD bay	1 x 2.5" SATA HDD bay	1 x 2.5" SATA HDD bay
Optional GPRS Module (support GSM 850, EGSM 900, DCS 1800 & PCS 1900)	N/A	Yes	N/A	Yes	Yes	Yes
Construction Material	ABS + PC Plastic front frame	ABS + PC Plastic front frame	ABS + PC Plastic front frame	ABS + PC Plastic front frame	ABS + PC Plastic front frame	ABS + PC Plastic front frame
LED Function	1 x Power ON/OFF LED on the front panel	1 x Power ON/OFF LED on the front panel	1 x Power ON/OFF LED on the front panel	1 x Power ON/OFF LED on the front panel	1 x Power ON/OFF LED on the front panel	1 x Power ON/OFF LED on the front panel
Mounting	Panel, Wall, Rack, Stand and Arm (VESA 100mm x 100mm)	Panel, Wall, Rack, Stand and Arm (VESA 100mm x 100mm)	Panel, Wall, Rack, Stand and Arm (VESA 100mm x 100mm)	Panel, Wall, Rack, Stand and Arm (VESA 100mm x 100mm)	Panel, Wall, Stand and Arm (VESA 100mm x 100mm)	Panel, Wall, Stand and Arm (VESA 100mm x 100mm)
Front Panel Color	Silver	Silver	Silver	Silver	Silver	Silver
Dimensions (WxHxD) (mm)	394 x 309 x 61	394 x 309 x 74.6	428 x 350 x 65	428 x 350 x 76	470x 383 x 67	470x 383 x 78.4
Operation Temperature (°C)	0°C~40°C with HDD 0°C~45°C with CF card or SATA interface 2.5" SSD HDD	0°C~40°C with HDD 0°C~45°C with CF card or SATA interface 2.5" SSD HDD	0°C~40°C with HDD 0°C~45°C with CF card or SATA interface 2.5" SSD HDD	0°C~40°C with HDD 0°C~45°C with CF card or SATA interface 2.5" SSD HDD	0°C~40°C with HDD 0°C~45°C with CF card or SATA interface 2.5" SSD HDD	0°C~40°C with HDD 0°C~45°C with CF card or SATA interface 2.5" SSD HDD
Storage Temperature (°C)	-20°C~60°C	-20°C~60°C	-20°C~60°C	-20°C~60°C	-20°C~60°C	-20°C~60°C
Net Weight	3.7 Kg	5.8 Kg	5.4 Kg	5.8 Kg	5.8 Kg	6.2 Kg
IP Level (front panel)	IP 64	IP 64	IP 64	IP 64	IP 64	IP 64
EMC	CE, FCC, CCC	CE, FCC, CCC	CE, FCC, CCC	CE, FCC, CCC	CE, FCC, CCC	CE, FCC, CCC
Safety	UL, CB	UL, CB	UL, CB	UL, CB	UL, CB	UL, CB
Touch Screen	Resistive Type 5-Wire (touch controller IC is on board)	Resistive Type 5-Wire (touch controller IC is on board)	Resistive Type 5-Wire (touch controller IC is on board)	Resistive Type 5-Wire (touch controller IC is on board)	Resistive Type 5-Wire (touch controller IC is on board)	Resistive Type 5-Wire (touch controller IC is on board)
Power Requirement	12VDC	12VDC	12VDC	12VDC	12VDC	12VDC

- 1 Industrial Computer
- 2 Compact PC
- 3 Embedded Computer
- 4 Panel PC/ LCD Monitor
- 5 Human Machine Interface
- 6 Digital Advertising
- 7 Serial & Wireless Connectivity
- 8 Digital Video Surveillance
- 9 Network Security Appliance
- 10 Data Acquisition & Control
- 11 Industrial RFID
- 12 Industrial Ethernet Switch
- 13 Medical PC
- 14 Power Supply
- 15 Accessories

Panel PC/ LCD Monitor

Afolux Series

Intel® Atom™ N270 1.6GHz Processor



Model Name	Anewtech AFL-07A-N270	Anewtech AFL-W10A-N270	Anewtech AFL-15AE-N270	Anewtech AFL-W19A-N270
LCD Size	7"	10.2"	15"	19"
Max Resolution	800 x 480	1024 x 600	1024 X 768	1440 x 900
Brightness (cd/m²)	350	400	250	300
Contrast Ratio	400:01:00	400:01:00	600:01:00	850:1
LCD Color	262K	262K	16.7M	16.2M
Pixel Pitch (mm)	0.1905(H) x 0.1905(V)	0.2175 mm (H) x 0.2175 mm (V)	0.297(H) x 0.297(V)	0.285(H) x 0.285(V)
Viewing Angle (H-V)	140°/100°	140° / 110°	160/160	160/160
Backlight MTBF	50000 hrs	40000 hrs	40000 hrs	50000 hrs
SBC Model	AFLMB-945GSE-N270-R10	AFLMB-945GSE-N270-R10	AFLMB2-945GSE-N270-R10	AFLMB2-945GSE-N270-R10
CPU	Intel® Atom™ process N270 1.6GHz CPU	Intel® Atom process N270 1.6GHz CPU	Intel® Atom™ process N270 1.6GHz CPU	Intel® Atom™ process N270 1.6GHz CPU
Chipset	Intel® 945GSE + ICH7M	Intel® 945GSE + ICH7M	Intel 945GSE / ICH7M	IntelR 945GSE + ICH7M
RAM	Supports one 400MHz or 533MHz DDRII SO-DIMM (2GB Max.)	Supports one 400 MHz or 533MHz DDRII SO-DIMM(2GB Max.)	Support two 200-pin 4GB (maximum) 400MHz DDR II SO-DIMM	Supports one 400MHz or 533MHz DDRII SO-DIMM (2GB Max.)
I/O Ports and Switches	1 x RS232 COM Port 1 x RS-232/422/485 COM port 2 x RJ-45 for Giga LAN 2 x USB 2.0 1 x Power Switch 1 x Reset Button 1 x Power Jack 1 x External SATA 1 x Audio Jack (Line-out)	1 x RS-232 COM Port 1 x RS-232/422/485 COM port 2 x RJ-45 for Giga LAN 2 x USB 2.0 1 x Power Switch 1 x Reset Button 1 x External SATA 1 x Audio Port 1 x Power Jack	1 x RS232 COM Port 1 x RS-232/422/485 COM port 2 x RJ-45 for Giga LAN 4 x USB 2.0 1 x Power Switch 1 x Reset Button 1 x Power Jack 1 x Audio Jack (Line-out) 1 xVGA Port	1 x RS232 COM Port 1 x RS-232/422/485 COM port 2 x RJ-45 for Giga LAN 4 x USB 2.0 1 x Power Switch 1 x Reset Button 1 x Power Jack 1 x Audio Jack 1 xVGA Port
SSD	CF TypeII	CF Type II	CF Type II	CF TypeII
Watchdog Timer	Software Programmable supports 1~255 sec. System Reset	Software programmable supports 1~255 sec. System reset	Software programmable supports 1~255 sec. System reset	Software programmable supports 1~255 sec. System reset
Audio	AMP 1.5W + 1.5W (internal speaker)	AMP 1.5W + 1.5W (internal speaker)	AMP 1.5W + AMP 1.5W	AMP 1.5W + 1.5W (internal speaker)
Expansion	1 x Wireless Lan 802.11 b/g Module (internal PCIe mini card interface)	1 x Wireless 802.11 b/g/n Lan Module (Mini PCIe Interface) 1 x Bluetooth Function (internal USB interface, Bluetooth V2.0)	1 x PCIe mini card (802.11 b/g)(Wireless LAN Module) 1 x Bluetooth Module (internal USB interface, Bluetooth V2.0)	1 x Wireless Lan 802.11 b/g Module (internal PCIe mini card interface) 1 x Bluetooth Function (internal USB interface, Bluetooth V2.0)
HDD Drive Bay	N/A	N/A	1 x 2.5" SATA HDD bay or Optional HSDPA Module	1 x 2.5" SATA HDD bay
Construction Material	ABS + PC Plastic front frame	ABS + PC Plastic front frame	ABS + PC Plastic front frame	ABS + PC Plastic front frame
LED Function	1 x LED on Front Panel for Power ON/OFF	1 x Power ON/OFF LED on Front Panel	1 x Power ON/OFF LED on front panel	1 x Power ON/OFF LED on Front Panel
Mounting	Panel, Wall, Rack, Stand or Arm mounting VESA 75 x 75mm	Panel, Wall, Rack, Stand and Arm, VESA 75mm x 75mm / 100mm x 100mm	Panel, Wall, Rack, Stand or Arm VESA 100mm x 100mm	Panel, Wall, Stand and Arm VESA 100mm x 100mm
Front Panel Color	Gray 7539U	Gray 7539U	Sliver (877U) & Gray (ABSA2037)	Black C
Dimension (WxHxD) (mm)	226 x 140 x 41	280 x 251 x 49	394 x 309 x 61	475 x 259 x 65
Operation Temperature	-10°C ~50°C	-10°C ~50°C	0~40°C with SATA HDD, -10°C ~50°C with CF Card or 2.5" SSD SATA HDD	0°C~40°C With HDD, 0°C~45°C With CF Card or SATA interface 2.5" SSD HDD
Storage Temperature (°C)	-20°C ~ 60°C	-20°C ~ 60°C	-20°C~60°C	-20°C ~60°C
Net Weight	0.6 Kg	1.4 Kg	3.2 kg	5.8 Kg
IP Level(front panel)	Front Frame IP64	Front Frame IP64	IP64	Frant Frame IP64
Touch Screen	Resistive Type 4-Wire (Touch controller IC is on board)	Resistive Type 5-Wire (Touch controller IC is on board)	Resistive Type 5-Wire (touch controller IC is on board)	Resistive Type 5-Wire (Touch controller IC is on board)
Power Adapter	P/N: 63000-FSP0361AD101C-RS 36W Power Adapter Input: 90VAC~264VAC, 50/60Hz Output: 12VDC	P/N: 63000-FSP0481AD101C-RS 48W Power Adapter Input: 90VAC~264VAC, 50/60Hz Output: 12VDC	P/N:63000-FSP0601AD101C746-RS 60W Power Adapter Input: 90VAC~264VAC, 50/60Hz Output: 12VDC	P/N:63000-FSP0841ADC11119-RS 84W Power Adapter Input: 90VAC~264VAC, 50/60Hz Output: 12VDC
Power Requirement	12VDC	12VDC	12VDC	12VDC
Power Consumption	23W	28W	49W	
Camera	-	300K pixel with digital microphone	-	300K pixel with digital microphone
Safety	CE / FCC / CB / CCC	CE / FCC / CB / CCC	CE / FCC / CB / CCC	CE / FCC / CB / CCC

Panel PC/ LCD Monitor

Afolux Series

AFL2D-12A(B) - 1D/2D Barcode Scanner AFOLUX Panel PC

12.1" Fanless Panel PC with built-in 1D and 2D Barcode scan engine allowing customers/ employees to access instant item information



50°/37.5° (H/V) Wide Scanning Area

Modularized 1D/2D Barcode Scanner

- Accurately decodes all 1D and 2D codes, even wrinkled, damaged or poorly printed
- 1.3 mega-pixel CMOS sensor captures high resolution images for decoding
- 50°/37.5° (H/V) large scanning area

1D/2D Code Reading

Technology	1D Code	2D Code
Read Condition	20 to 25 characters	100 to about 2,000 characters

Efficient Scanning Performance

- 50°/37.5° (H/V) wide scanning area reads twice the area of typical scanner
- Area-scanning features non-direction reading drive scanning performance
- 25mm-310mm scanning distance



Quick Install



- 1 Industrial Computer
- 2 Compact PCI
- 3 Embedded Computer
- 4 Panel PC/ LCD Monitor
- 5 Human Machine Interface
- 6 Digital Advertising
- 7 Serial & Wireless Connectivity
- 8 Digital Video Surveillance
- 9 Network Security Appliance
- 10 Data Acquisition & Control
- 11 Industrial RFID
- 12 Industrial Ethernet Switch
- 13 Medical PC
- 14 Power Supply
- 15 Accessories

Panel PC/ LCD Monitor

RFID Panel PC



Model Name	Anewtech ACT-457A	Anewtech ACT-408A	Anewtech ACT-08A-N270
LCD Size	5.7"	8"	8.4"
Max Resolution	640 x 480	800 x 600	800 x 600
Brightness (cd/m ²)	400	250	400
Contrast Ratio	300:01:00	500:01:00	500:01:00
LCD Color	262K	262K	262K
Pixel Pitch (mm)	0.06(H) x 0.18(V)	0.2025(H) x 0.2025(V)	0.213(H) x 0.213(V)
Viewing Angle (H-V)	140°/100°	140°/130°	120/100
Backlight MTBF	50000 (LED Backlight)	30000	50000hrs
SBC Model		ACTMB4-945GSE-N270-R10	AFLMB-N270-R10
CPU	Alchemy AU1250 500MHz	Intel® Atom™ N270 (1.6GHz)	Intel® Atom™ N270 (1.6GHz)
Chipset		Intel® 945GSE + ICH7M	Intel® 945GSE + ICH7M
RAM	256MB DDR2 SDRAM	Supports one 400MHz or 533MHz DDRII SO-DIMM (2GB Max.)	One DDRII SO-DIMM Up to 2GB
I/O Ports and Switches	1 x RS-232 COM Port 1 x RS-422/485 COM Port 1 x RJ-45 for 10/100Mbps Ethernet 2 x USB 2.0 1 x Power Jack 1 x Reset Button 1 x 5 Pin Terminal Block for Signal Input 1 x 8 Pin Terminal Block for Relay Output	1 x RJ-45 for RS-232 COM Port 1 x RJ-45 for RS-232/422/485 COM port 1 x RJ-45 for Giga LAN 3 x USB 2.0 (2 in the rear, 1 in front on the panel) 1 x Power Switch 1 x 12V DC Jack 1 x 4 Pin Terminal Block for Signal Input 1 x 8 Pin Terminal Block for Relay Output 1 x 8 Pin Terminal Block for Wiegand Reader	1 x RS232 COM Port 1 x RS232 or 422/485 COM Port 2 x Giga LAN 2 x USB 2.0 1 x Power Switch 1 x Reset Button 1 x Power Jack
SSD	Mini SD Card	CF Typell	CF Type II
Watchdog Timer	Software programmable supports 1~255 sec. System reset	Software programmable supports 1~255 sec. System reset	Software programmable supports 1~255 sec. System reset
Audio	AMP 2W + 2W	AMP 3W + 3W (internal speaker)	AMP 1.5W + AMP 1.5W (Internal speaker)
Mounting	Panel, Wall, VESA 75mm x 75mm	In-Wall, Wall, Stand and Arm VESA 75mm x 75mm / 100mm x 100mm	Panel, Wall, Stand and Arm mounting VESA 75 x 75mm
Front Panel Color	Blue & White	Silver	Blue and White
Dimension (WxHxD) (mm)	215 x 207 x 52.7	225 x 236.5 x 52.5	251.72 mm x 244.69 mm x 53.3 mm
Operation Temperature	-10°C ~60°C	-10°C ~ 50°C	-10°C ~ 50°C
Storage Temperature (°C)	-20°C ~70°C	-25°C ~ 60°C	-25°C ~ 60°C
Safety & EMI	CE / FCC / CB / CCC	CE / FCC / CB / CCC	CE / FCC / CB / CCC
Net Weight	0.7Kg	1.69	1.1 kg
IP Level(front panel)	IP64 Front Panel	IP64 Front Panel	IP64 Front Panel
Touch Screen	Resistive Type 4-Wire	Resistive Type 5-Wire (Touch controller IC is on board)	Resistive Type 5-Wire (Touch controller IC is on board)
Power Adapter	P/N: 63000-FSP0401ADF03A822-RS Power: 40W Input: 90VAC~264VAC, 50/60Hz Output: 12VDC	P/N: 63000-FSP0481AD101C-RS 48W Power Adapter Input: 90VAC~264VAC, 50/60Hz Output: 12VDC	48W Power Adapter Input: 90VAC~264VAC, 50/60Hz Output: 12VDC
Power Requirement	12V DC-IN	12VDC	12VDC
RFID	EM 125KHz and MIFARE 13.56MHz	EM 125KHz and MIFARE 13.56MHz	EM 125KHz and MIFARE 13.56MHz
Camera	300K pixel web-camera	300K pixel web-camera	300K pixel web-camera

Panel PC/ LCD Monitor

POS Panel PC

Fanless POS PC



AFL-12B/15A-LX POS Panel PC
12.1" and 15"
Economical POS Panel PC



- Fanless design for rigorous environments
- Customer-friendly self-service solutions
- All-in-one easily maintained system
- Versatile mounting suits diverse applications
- Selectable AT or ATX power mode
- Built-in 1.5 W speakers
- IP 64 front panel protection withstand harsh environment

Help you Drive Business Success

Anewtech AFOLUX POS touch panel PCs are ideal in applications where cost, rugged design, and limited space are top criteria, especially for harsh retail or hospitality environments.

Space-Saving All-in-One System

General POS system with separate parts occupy the space	AFOLUX POS Panel PC System	
Building Cost	High	Low
Maintenance	Complicated	Easy
Appearance	A POS system with lots of cables and peripherals	Simple, slim and luxurious
Space Occupy	High	Low



	AFOLUX POS series		Enrich POS series		Enrich POS series	
	AFL-12B-LX	AFL-15A-LX	EP-162	EP-165	EP-265	EP-267
LCD	12"	15"	12"	15"	15"	17"
CPU	AMD Geode LX 800		Intel® Celeron M Intel® Core Duo (Optional CPU Selection Available)		Intel® Celeron M (Optional CPU Selection Available)	
Chipset	AMD Geode CS5536		Intel® 910GML Intel® 945GME		Intel® 910GML Intel® 945GME	
Features	<ul style="list-style-type: none"> • Cost-Effective Solution • Fanless Design • Ready-to-deploy system • Built-in 802.11 b/g wireless module • iSMM system health management software 		<ul style="list-style-type: none"> • Fanless: EP-162-910/ EP-165-910 • Non-fanless: EP-162-945/ EP-165-945 • Customized available with CPU choices (Only available for Intel® 945GME) • Support second display • Built-in 802.11 b/g wireless module • iSMM system health management software 		<ul style="list-style-type: none"> • Unique Appearance Design • Modular Mechanical Design • Support Second Display • Full I/O interface for peripherals • Customized available with CPU choices • Built-in 802.11 b/g wireless module • iSMM system health management software 	



Panel PC/ LCD Monitor

POS Panel PC



Model Name	Anewtech AFL-12B-LXPOS	Anewtech AFL-15A-LXPOS
Mainboard	AFLMB-LXPOS-R10	
CPU	AMD Geode™ LX 800 (500MHz)	
Chipset	AMD Geode™ LX 800+ AMD Geode™ CS5536	
Memory	Supports one 1GB (maximum)333MHz or 400MHz SO-DIMM	
LCD Size	12.1" TFT LCD	15" TFT LCD
Max Resolution	800 x 600 (1024 x 768)	1024 x 768
Brightness (cd/m²)	350 (450)	350
Contrast Ratio	500:1 (700:1)	700:1
LCD Color	262K	262K
Pixel Pitch (mm)	0.3075(H) x 0.3075(V) (0.240(H) x 0.240 (V))	0.297(H) x 0.297(V)
Viewing Angle (H-V)	140(H) / 120(V) (160(H) / 160(V))	140(H) / 125(V)
Backlight MTBF	50000 hrs	50000 hrs
Touch Screen Type	Resistive Type 5-Wire	
Housing Material	ABS + PC Plastic front frame	
IP Level	IP 64 in front	
Front Panel Color	Gray	Silver
HDD	1 x 2.5" HDD bay With ANTI-SHOCK	
SSD	CF Type II	
Expansion- Mini-PCI Slot	1x mini-PCI slot (for build-in wireless module)	
USB	2 x USB 2.0	
Serial/COM	2 x RS-232 COM Port (pin 9 with RI , 5V or 12V switch selectable) With LED Indicator (12V--Red / 5V--Yellow / RI--Green)	
LAN (10/100Mbps)	1 x RJ-45 GbE	
Cash Drawer	1 x RJ-12 (12V) for Cash Drawer	
DC Jack	1 x DC Jack latch type	
	1 x Power Switch	
	1 x Reset Button	
POWER LED	1	
Built-in Speaker	AMP 1.5W+AMP 1.5W	
Power Adapter	Power: 48W	Power: 60W
	Input: 90VAC~264VAC @ 50/60Hz	Input: 90VAC~264VAC @ 50/60Hz
	Output:12VDC	Output:12VDC
MSR	Magnetic Card Reader (USB interface) (optional)	
MSI	Magnetic Card, Smart Card,Dallas iButton (USB interface) (optional)	
Cash Drawer	RJ-12 interface (optional)	
Bar Code Reader	Hand-held Laser Scanner (USB interface) (optional)	
EMC and Safety	CE,FCC,CCC,UL,CB	
Operating Temperature	0°C~50°C	
Storage Temperature	-20°C~60°C	
Dimension (WxHxD) (mm)	304 x 246 x 49.5	394 x 309 x 61
Mounting	Panel, Wall, Stand VESA 75mm x 75mm / 100 x 100mm	Panel, Wall, Stand VESA 100 x 100mm
Net Weight	1.8 Kg	3.2 Kg
Power Consumption	29W	38W
OS Support	Windows XPE or Windows CE 5.0 or Windows CE 6.0 (optional)	
Watchdog Timer	Software programmable supports 1~255 sec. System reset	

Panel PC/ LCD Monitor

POS Panel PC



Model	Anewtech EP-308A
LCD Size	8"
Resolution	800 x 600
Brightness (cd/m ²)	250
Contrast Ratio	500:1
LCD Color	262K
Pixel Pitch (mm)	0.2025(H) x 0.2025(V)
Viewing Angle (H-V)	130/110
Backlight MTBF	30000
CPU	Intel® Atom™ 1.6G N270 processor
Chipset	Integrated in Intel® 945GSE
Graphic	Integrated in Intel® 945GSE
RAM	Built-in 1GB DDR2 memory. System support one 200-pin dual-channel 667 MHz DDR2 up to
I/O Ports	1 GB 1 x RJ45 RS232 COM Port 1 x RJ45 RS232/422/485 COM Port 1 x RJ12 for Cash Drawer 1 x Giga LAN 4 x USB 2.0 1 x Power Button (Front Panel) 1 x Power Jack 1 x Reset switch 1 x AT/ATX switch
HDD Drive Bay	1 x 2.5" SATA HDD
SSD Drive Bay	1 x CFII
Audio	AMP 1.5W + AMP 1.5W
Construction Front Panel	ABS + PC Plastic front frame
Construction Chassis	Aluminum Chassis
Power Adapter	FSP070-RAA607, VAC:90~264V, 24V/70W
LED Function	1 x LED on front panel for power on/off
Touch Screen	5-wire resistive type
Printer	Built-in 2" thermal printer with Auto-cutting
Operation Temperature (°C)	0°C~40°C
IP Level	IP 64
Safety & EMI	CE / EMC / FCC / CB /CCC

Model Name	Anewtech EP-165E-N270	Anewtech EP-265E-N270
LCD	15"	15"
CPU	Intel® ATOM™ N270 1.6GHz	Intel® ATOM™ N270 1.6GHz
Chipset	Intel® 945GSE + ICH7M	Intel® 945GSE + ICH7M
I/O Interface	1 x VGA 5 x Powered COM (5V/12V/RI) 6 x PoweredUSB (5V/12V) 1 x RJ-12 Digital I/O for Cash Drawer 1 x DB-25 1 x Power Switch 1 x AT/ATX Power Mode	1 x VGA port 7 x USB2.0 4 x RS-232 COM port with LED Indicator 2 x 12V/24V RJ-11 for Cash Drawer 1 x DB-25 1 x LAN Port 1 x 802.11 a/b/g wireless LAN 1 x Power Switch
Memory	Built-in 1GB DDR2 memory, supports 2 x 240 pin dual channel DDR2 400/533MHz up to 2GB	Built-in 1GB DDR2 memory, Supports 2 x 240 pin dual channel DDR2 400/533MHz up to 2GB
Max Resolution	1280 x 1024	1024 x 768
Brightness (cd/m ²)	250	250
Contrast Ratio	600:01:00	600:01:00
LCD Color	16.7M	16.7M
Touch Screen Type	Resistive Type 5-Wire	Resistive Type 5-Wire
Pixel Pitch (mm)	0.297(H) x 0.297(V)	0.297(H) x 0.297(V)
Viewing Angle (H-V)	160/160	160/160
Backlight MTBF	40000 hours	40000 hours
IP Level	IP64 (front panel)	IP64 (front panel)
Front Panel Color	Black	Black
HDD	1 x 2.5" SATA HDD Bay	1 x 2.5" SATA HDD Bay
SSD	1 x CF Type II slot	1 x CF Type II slot
Power Consumption	TDB	66W
EMC and Safety	CE/ FCC/ CB/ UL	CE/ FCC/ CB/ UL
Operating Temperature	0°C~40°C	0°C~40°C
Dimension (WxHxD)	387 x 321 x 221 (mm)	373 x 390 x 335 (mm)
Net Weight	8.34Kg	8.30 Kg

EP-308A Mini POS PC

Built-in 2" easy-loading thermal printer with auto-cutting

High Speed Thermal Printer

The built-in printer can print a 100 mm/s (800 dot lines/s) maximum.

Auto Cutter

The built-in printer supports paper full cut or partial cut according to user selection.

Easy Paper Setting

Paper can be easily inserted and the auto-loading function is also available



- 1 Industrial Computer
- 2 Compact PC
- 3 Embedded Computer
- 4 Panel PC/ LCD Monitor
- 5 Human Machine Interface
- 6 Digital Advertising
- 7 Serial & Wireless Connectivity
- 8 Digital Video Surveillance
- 9 Network Security Appliance
- 10 Data Acquisition & Control
- 11 Industrial RFID
- 12 Industrial Ethernet Switch
- 13 Medical PC
- 14 Power Supply
- 15 Accessories

Panel PC/ LCD Monitor

IBX POS PC Series



Anewtech IBX-700

Anewtech IBX-800

Diverse business applications with IBX POS PC

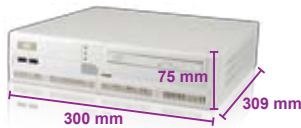
IBX POS PC is the dedicated design computer for Point of Service/Sales business. As the compact box solution, IBX POS can be easily integrated with peripherals and external devices in any business environment for any application .

Features

- Broad range of performance levels
- Full range I/O connectors comply with various peripherals & devices.
- LED indicators with powered COM ports
- Front drawing design chassis makes it easy for maintenance
- Ready-to-deploy solution once software are installed
- Industrial-grade design perfect for long hours working



IBX Platform



Model Name	Anewtech IBX-700 Slim Fanless	Anewtech IBX-800 Low Power Dual Core	Anewtech IBX-900 Dual Core Performance
Dimensions	309 x 300 x 75 mm	309 x 330 x 85 mm	309 x 350 x 95 mm
Generation	Pentium® M	Mobile Core™ Duo	Desktop Core™ 2 Duo
FSB	400 MHz / 533 / 400 MHz	Yonah 677 / 533 MHz	1066 / 800 MHz
Architecture	 Socket 479  Socket 479	 Socket M  Socket M	 LGA 775
Memory	1GB memory equipped, support up to 2GB	1GB memory equipped, support up to 4GB	1GB memory equipped, support up to 8GB
Platform	 910GML 915GM	 945GM	 945G

Panel PC/ LCD Monitor

IBX POS PC Series



Model No.	Anewtech IBX-700-9103		Anewtech IBX-700-9153	Anewtech IBX-800-9452	Anewtech IBX-900-9454	
CPU Options	Intel® ULV Celeron® M 1GHz / 512KB L2 cache Processor 373		Intel® Celeron® M 1.5GHz/ 1MB L2 cache Processor 370	Intel® Core™ Duo 1.66GHz/ 2MB L2 cache Processor T2300E	Intel® Celeron® D 3.2GHz/ 512KB L2 cache Processor 352 Intel® Pentium® 4 3.4GHz/ 2MB L2 cache Processor 651 Intel® Pentium® Dual-Core 1.8GHz/ 1MB L2 cache Processor E2160	
Chipset	Intel® 910GML + ICH6-M		Intel® 915GM + ICH6-M	Intel® 945GM + ICH7-R	Intel® 945G + ICH7-R	
Memory	built-in 1GB DDR2 memory system supports 2 x 240 pin Dual channel DDR2 400/533 MHz up to 2GB		built-in 1GB DDR2 memory system supports 2 x 240 pin Dual channel DDR2 400/533 MHz up to 2GB	built-in 1GB DDR2 memory system supports 2 x 240 pin Dual channel DDR2 533/667MHz up to 4GB	built-in 1GB DDR2 memory system supports 2 x 240 pin Dual channel DDR 2 533/667/800MHz up to 8GB	
ODD	1 x slim DVD Combo CD-RW 24x, DVD-ROM 8x		1 x slim DVD Combo CD-RW 24x, DVD-ROM 8x	1 x slim DVD Combo CD-RW 24x, DVD-ROM 8x	1 x slim DVD Combo CD-RW 24x, DVD-ROM 8x	
HDD	built-in 1 x 80GB 2.5" SATA HDD supports upto 2 x 2.5" HDD		built-in 1 x 80GB 2.5" SATA HDD supports upto 2 x 2.5" HDD	built-in 1 x 80GB 2.5" SATA HDD supports upto 2 x 2.5" HDD	built-in 1 x 160GB 3.5" SATA HDD supports upto 2 x 3.5" HDD	
SSD	1 x CF Type II slot		1 x CF Type II slot	1 x CF Type II slot	1 x CF Type II slot	
Display	Integrated in Intel® 910GML		Integrated in Intel® 915GM	Integrated in Intel® 945GM	Integrated in Intel® 945G	
Extension Slot	Expandable with optional riser card PCIR-700: 1 x PCI, 1 x PCIe MiniCard PCIER-700: 1 x PCIe x 1, 1 x PCIe MiniCard			Expandable with optional riser card PCIR-800: 1 x PCI, 1 x PCIe MiniCard PCIER-800: 1 x PCIe x 1, 1 x PCIe MiniCard	Expandable with optional riser card PCIER-900: 1 x PCIe x 16, 1 x PCIe x 1, 1 x PCIe MiniCard	
I/O	Display	1 x VGA		1 x VGA	1 x VGA	
	Powered COM	5V or 12V output from pin 9, with LED voltage indicator (COM1~COM4)			5V or 12V output from pin 9, with LED voltage indicator (COM1~COM4)	5V or 12V output from pin 9, with LED voltage indicator (COM1~COM4)
	COM	2 x RS-232 (COM5 / COM6)			2 x RS-232 (COM5 / COM6)	2 x RS-232 (COM5 / COM6)
	LPT	1 x DB-25			1 x DB-25	1 x DB-25
	PoweredUSB	1 x 12V PoweredUSB			1 x 12V PoweredUSB	1 x 12V PoweredUSB
	USB	2 x USB 2.0 on front panel 2 x USB 2.0 on I/O panel		2 x USB 2.0 on front panel 2 x USB 2.0 on I/O panel	2 x USB 2.0 on front panel 2 x USB 2.0 on I/O panel	2 x USB 2.0 on front panel 2 x USB 2.0 on I/O panel
	Cash Drawer Port (Digital I/O)	2 x RJ-12, 1DI /1DO with 12VDC output			2 x RJ-12, 1DI /1DO with 12VDC output	2 x RJ-12, 1DI /1DO with 12VDC output
	LAN	1 x GbE with RJ-45			1 x GbE with RJ-45	1 x GbE with RJ-45
	Wireless	Expandable by BTO order with MOQ 802.11b/g with PIFA antenna, PCIe interface			Expandable by BTO order with MOQ 802.11b/g with PIFA antenna, PCIe interface	Expandable by BTO order with MOQ 802.11b/g with PIFA antenna, PCIe interface
	KB/MS	1/1 PS2			1/1 PS2	1/1 PS2
Audio	1 x Line-out, 1 x MIC in			1 x Line-out, 1 x MIC in	1 x Line-out, 1 x MIC in	
Operation Temperature	0° ~ 45°			0° ~ 45°	0° ~ 45°	
Power Input	12VDC in with 63000-FSP0841ADC11118-RS 84W power adaptor 9~36VDC in by IDD-9364120A DC-to-DC module			90V~264VAC in, with ACE-A615A 150W ATX power supply	90V~264VAC in, with ACE-A627A 270W ATX power supply	
Dimensions (DxWxH)	309 mm x 300 mm x 75 mm			309 mm x 330 mm x 85 mm	309 mm x 350 mm x 95 mm	
Net Weight	3.6 kg			4.3 kg	5.1 kg	
EMC / Safety	CE, FCC class B, UL, CCC			CE, FCC class B, UL, CCC	CE, FCC class B, UL, CCC	

- 1 Industrial Computer
- 2 Compact PC
- 3 Embedded Computer
- 4 Panel PC/ LCD Monitor
- 5 Human Machine Interface
- 6 Digital Advertising
- 7 Serial & Wireless Connectivity
- 8 Digital Video Surveillance
- 9 Network Security Appliance
- 10 Data Acquisition & Control
- 11 Industrial RFID
- 12 Industrial Ethernet Switch
- 13 Medical PC
- 14 Power Supply
- 15 Accessories

Panel PC/ LCD Monitor

Slim PPC



Model Name	Anewtech PPC-S123T	Anewtech PPC-S154T	Anewtech PPC-S155T	Anewtech Panel 2155-810-FLIGE
LCD Size	12.1" TFT LCD	15" TFT LCD	15" TFT LCD	15" TFT LCD
Max. Resolution	800 x 600	1024 x 768	1024 x 768	1024 x 768
Brightness	400 cd/m ²	350 cd/m ²	350 cd/m ²	250 cd/m ²
LCD Color	256 K or above	256 K or above	256 K or above	
Pixel Pitch	0.3075 x 0.3075 mm	0.297 x 0.297 mm	0.297 x 0.297 mm	0.297 x 0.297 mm
Contrast Ratio	-	-	-	-
Viewing Angle	70° (left), 70° (right), 60° (up), 50° (down)	60° (left), 60° (right), 40° (up), 60° (down)	60° (left), 60° (right), 40° (up), 60° (down)	130° (H), 120° (V)
Backlight MTBF	50,000 hrs	50,000 hrs	50,000 hrs	30,000 hrs
CPU	Socket 370 based Intel Pentium® III & Celeron, up to 1.26 GHz	Socket 478 based Mobile Intel® Pentium® 4 Processor-M, up to 2.2 G	Socket 478 based Intel® Celeron® M / Pentium® M, up to 2.0 GHz	ULV Intel® Celeron M 1GHz/0Kb
RAM	Max. 512 MB SDRAM, SODIMM x 2	Max. 1 GB DDR SDRAM, SODIMM x 2	Max. 2 GB DDR2 SDRAM, SODIMM x 2	Max. 1 GB DDR DIMM
I/O Ports	3 x RS-232 1 x RS-232/422/485 1 x LPT x USB 2.0	1 x RS-232 1 x RS-232/422/485 4 x USB 2.0	1 x RS-232 1 x RS-232/422/485 4 x USB 2.0	2 x RS-232 1 x RS-232/422/485 1 x parrel port 4 x USB 2.0 1 x RJ-45 1 x VGA
SSD	CF Type I	CF Type II	CF Type II	CF
Expansion Slot	1 x PCI	1 x Mini PCI	1 x Mini PCI	1 x PCI
HDD Drive Bay	1 x 2.5" HDD	1 x 2.5" HDD	1 x 2.5" HDD	1 x 2.5" HDD
FDD Drive Bay	-	-	-	-
CD-ROM Drive Bay	-	-	-	-
Construction Front Panel	Aluminium	Aluminium	Aluminium	-
Construction Chassis	Aluminium	Aluminium	Aluminium	-
Power Supply	18 ~ 25 VDC	24 VDC	19 VDC	19 ~ 264 VDC
Mounting	-	-	-	-
Color	Sliver	Sliver	Sliver	Ivory (16.2M)
Operation Temperature	0 ~ 45° C	0 ~ 45° C	0 ~ 45° C	0 ~ 45° C
Dimension (WxHxD)	311 x 237 x 54.5 mm	375 x 299 x 49 mm	375 x 299 x 60 mm	396 x 92 x 312 mm
Weight	2.6 kg	4.9 kg	4.28 kg	7.5kg
Front Panel Protection	IP65 / NEMA 4	IP65 / NEMA 4	IP65 / NEMA 4	IP65

Panel PC/ LCD Monitor

Vehicle Mount PPC



Model Name	Anewtech TREK-776	Anewtech TREK-775	Anewtech TREK-743
LCD Size	12.1" TFT LCD	10.4" TFT LCD	7" WVGA TFT LCD
Max. Resolution	1024 x 768	800 x 600	800 x 480
Brightness	450 cd/m ²	450 cd/m ²	400 cd/m ²
LCD Color	256 K & above	256 K & above	262k
Pixel Pitch	-	-	-
Contrast Ratio	-	-	-
Viewing Angle (H-V)	160°/160°	140°/110°	140°/120°
Backlight MTBF	50,000 hrs	50,000 hrs	Min. 10,000 hrs
CPU	Intel® ULV Celeron® M / LV Pentium® M	Intel® ULV Celeron® M / LV Pentium® M	Onboard AMD LX800 500 MHz
RAM	Max. 2 GB DDR SDRAM	Max. 2 GB DDR SDRAM	One 200-pin SODIMM socket, accepts up to 1 GB DDR266/333 SDRAM (Win CE supports up to 512 MB DDR)
I/O Ports	2 x RS-232 2 x RS-232/422/485 1 x LPT 2 x USB 2.0	2 x RS-232 2 x RS-232/422/485 1 x LPT 2 x USB 2.0	2 x RS-232/422/485 3 x USB 2.0 1 x CAN 4 x DI/ DO
SSD	CF Type I / II	CF Type I / II	CF Type I / II
Expansion Slot	1 x Mini PCI	1 x Mini PCI	1 x Mini PCI
HDD Drive Bay	1 x 2.5" HDD	1 x 2.5" HDD	-
FDD Drive Bay	-	-	-
CD-ROM Drive Bay	-	-	-
Construction Front Panel	Aluminium	Aluminium	Aluminium
Construction Chassis	Aluminium	Aluminium	Aluminium
Power Supply	9 ~ 58 V	9 ~ 58 V	9-36V
Mounting	-	-	-
Color	Black	Black	-
Operation Temperature	0 ° C ~ 40° C	0 ° C ~ 40° C	-20 ° C ~ 60° C
Dimension (WxHxD)	310 x 255 x 90 mm	310 x 255 x 80 mm	255 x 160 x 50 mm
Weight	4.8 kg	3.8 kg	1.7 kg
Front Panel Protection	IP65	IP65	IP65
Touch Screen	Analog resistive	Analog resistive	Analog resistive

- 1 Industrial Computer
- 2 Compact PCI
- 3 Embedded Computer
- 4 Panel PC/ LCD Monitor
- 5 Human Machine Interface
- 6 Digital Advertising
- 7 Serial & Wireless Connectivity
- 8 Digital Video Surveillance
- 9 Network Security Appliance
- 10 Data Acquisition & Control
- 11 Industrial RFID
- 12 Industrial Ethernet Switch
- 13 Medical PC
- 14 Power Supply
- 15 Accessories

Panel PC/ LCD Monitor

Industrial LCD Monitor

IP 65 standard for tough environment



Industrial Display Monitor

The DM series displays are flexible, durable systems that are easily integrated into a wide variety of general-purpose industrial applications including HMI, factory automation and process control.

DM Series

Sizes: 6.5" to 19"

Features

- Aluminum front panel with optional RS-232 interface touchscreen
- Robust chassis and retention kit structure for tough environment
- Over 300cd/m² high brightness and 50000hrs MTFB long lifetime panel
- Analog VGA interface supports most of general system boards
- M models support 9~36V DC power input for mobile application



Research & Development



Factory Automation

Hot Pluggable



LCD Monitor/ Keyboard/ Mouse/ Speak

The LKM series is capable of controlling up to 8 computers. All LKM products come with a LCD monitor and a keyboard with built-in touchpad in a 1U rack. The five-in-one space saving design allows easy install on any 1U system rack.

LKM Series

Sizes: 12.1" to 15"

Features

- Channel change control, auto scan control, programmable station name.
- KVMA Switch : 8 port KVMA switch can be set via LCD module
- Standard support of versions: English, Japanese, German, French, Italian
- Embedded speaker supports alarm warning notice or audio application to power down the switch



Multiple Control Displays



Data Center

-30°C~+70°C



Wide Temperature Display Monitor

The TDM series offers an extended operational temperature range of -30°C~ +70°C that can tolerate temperature extremes in harsh operating environment, both indoors and out.

TDM Series

Sizes: 12.1" to 15"

Features

- M models support 9~36V DC power input for mobile application
- DVI-D and Analog VGA input interface for comprehensive usage
- IP 65 Compliant



Steel Refining



Ultra-Cooling Condition

Stainless Steel Front Bezel



Industrial Stainless Steel Display Monitor

The ISDM series features a stainless steel frame and chassis that can resist most corrosive acids, alkaline solutions and chlorinated environments that are commonly found in processing plant

ISDM Series

Sizes: 8.4" to 19"

Features

- Stainless Steel chassis & bezel features corrosion resistance and hygienic properties
- Full function OSD keys in back panel to help customers easy to control
- IP 65 compliant front panel



Food Processing Plant



Pharmaceutical

Built - in Speakers



Afolux Touch Screen Monitor

The innovative yet elegant AFOLUX Multimedia monitors with built in speakers are easily implemented in diverse applications including motor vehicles, surveillance devices and digital signage solutions.

AFL Series

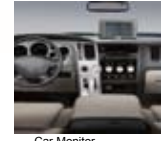
Sizes: 7" to 19"

Features

- Elegant design with durable and light plastic construction
- Multiple video inputs are suitable for more applications
- Ambient light sensor (ALS) detects ambient light for automated screen adjustments to optimize viewing. (For AFL-15M/17M/19M only)



POS



Car Monitor

Panel PC/ LCD Monitor

Industrial LCD Monitor



Open Frame Monitor

The ES series is designed based on panel and system combinations. Flexible designs and completely certified processes provide solutions that can integrate with a range of customer applications.

ES Series

Sizes: 6" to 15"

Features

- 640 x 480 ~ 1024 x 768 pixels and wide operating temperature (-20 ~ 70° C)
- Resistive or Capacitive touchscreen and 3 mm tempered glass options
- Versatile mounting brackets
- Modular architecture for efficient integration.
- Special back cover designed for 3.5" SBCs
- Sunlight readable option. Ultra-high brightness up to 1000 nit with LED backlight technology option VGA or LVDS interface (S-Video optional)



Multiple Control Displays



Untouchable Location



LCD Kits Monitor

The LCD Kits series meets the requirements of customers with experience and capability in mechanical design. It provides a cost-effective and straight forward display solution for system integration.

LCD Kits Series

Sizes: 6.5" to 15"

Features

- Robust chassis and retention kit structure for shocking and vibration requirement
- Over 300cd/m² high brightness and 50000hrs MTFB long lifetime panel
- Analog VGA interface supports most of general system boards
- 800 & 1000 nits super high brightness available



Processing Automation



Process Monitoring



Sunlight Readable Monitor

The SRM series is designed to operate in high ambient lighting conditions at 800 nits or 1000 nits of brightness within extended operating temperature ranges and is especially designed for outdoor use under direct or indirect sunlight.

SRM Kit Series

Sizes: 12.1" to 15"

Features

- 12.1" Anti-reflection Technology
- 15' Anti-glare Technology
- Nature Color Matrix (NCM) Technology
- Innovative auto-dimming function
- Wide Operating Temperature: -10°C ~ +60°C
- IP 65 Compliant



Outdoor Kiosk



Gas Station



Touch Screen Series

The T- R series features 6.5" ~ 19" Resistive LCD Touch Screen

T-R Series

Sizes: 6.5" to 15"

Features

- Optical clarity: Total transmission 78 % or more,
- Input through a special stylus or finger 100g or less.
- High reliability and durability in the field



Manufacturing Plant



Factory Automation



Multimedia Industrial Grade TFT LCD Monitor

The MDM series features a IP65 waterproof aluminium front panel with 5-in-1 Multiple video input supports DVI-D, Analog VGA, Component, Composite and S-Video interfaces suitable for most devices currently in use.

MDM Series

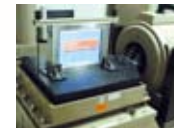
Sizes: 15" to 19"

Features

- 5-in-1 Multiple video input
- Remote Control for OSD function
- DCDi Edge Processing
- 3D Digital COMB-Filter
- Responses Time Compensation
- Ambient Light Sensor
- Real Color Control



HMI



Research & Development

1
Industrial Computer

2
Compact PC

3
Embedded Computer

4
Panel PC/ LCD Monitor

5
Human Machine Interface

6
Digital Advertising

7
Serial & Wireless Connectivity

8
Digital Video Surveillance

9
Network Security Appliance

10
Data Acquisition & Control

11
Industrial RFID

12
Industrial Ethernet Switch

13
Medical PC

14
Power Supply

15
Accessories

Panel PC/ LCD Monitor

Industrial Workstation



Model Name	Anewtech WS-612GS	Anewtech WS-843GS	Anewtech WS-855GS	Anewtech WS-875GS
LCD Size	10.4"	12.1"	15"	17"
Resolution	800*600	800*600/1024*768	1024*768	1280*1024
Brightness (cd/m ²)	230/400	400/450	350	300
Contrast	500:1	500:1/700:1	400:1	500:1
LCD color	262K	262K	262K	16.2M
Backlight Hours	50000	50000	50000	50000
Input Interface	Analog VGA (DB-15)			
Slot	7 slots	10 slots	10 slots / MB	10 slots / MB
Form Factor	Full / Half Size SBC		Full / Half Size SBC / m-ATX Motherboard	
Mounting	19" Rack Mount			
Rack Height	6U	7U	8U	9U
Front Frame	Aluminum			
IP Level	IP64			
KeyPad	63 Keys	59 Keys	59 Keys	59 Keys
Function Key	20 Keys	10 Keys	10 Keys	10 Keys
Touch Pad	Yes			
Front Panel USB	4	2	2	2
HDD Drive Bay	1 x 3.5" HDD	1 x 3.5" HDD	1 x 3.5" HDD	1 x 3.5" HDD
CD-ROM Drive Bay	N/A	1 x 5.25" CD-ROM	1 x 5.25" CD-ROM	1 x 5.25" CD-ROM
FDD Bay	1 x 3.5" FDD	1 x 3.5" FDD	1 x 3.5" FDD	1 x 3.5" FDD
System Fan	12cm ball bearing 99.6 CFM fan			
Touch Screen	5-wire resistive touch screen			
Vibration	5 ~ 17 Hz, 0.1" double amplitude displacement 17~640 Hz, 1.5G acceleration peak to peak			
Shock	10G acceleration peak to peak (11ms)			
Relative Humidity	5 ~ 95%, non-condensing			
Operating Temperature	0°C ~ 50°C			
Color	Silver (PANTONE PMS-8001)			
Dimension (W x H x D)(mm)	483 x 266 x 248	483 x 310 x 268	483 x 353 x 261	483 x 398 x 268
Weight (NW / GW)	9.2 / 14.4 kg	10.7 / 17.2 kg	12 / 18.2 kg	14.2 / 20.6 kg

Panel PC/ LCD Monitor

Industrial Workstation



Model Name	Anewtech EC-1010G	Anewtech RPC-6010G	Anewtech RPC-6022G	Anewtech RPC-6010/ 6108
SBC Form Factor	Full size slot CPU card ATX or Micro ATX	Full size slot CPU card ATX or Micro ATX	Full size slot CPU card ATX or Micro ATX	Half-size CPU card
Drive Bays	3 x 5.25" + 1 x 3.5"	3 x 5.25" + 1 x front-accessible 3.5" + 1 x HDD	1 x 5.25" + 1 x front-accessible 3.5" + 1 x HDD	2 x 3.5" HDD
Cooling Fans	2 x 8 cm	1 x 12 cm	2 x 12 cm	2 x 8cm
I/O openings	2 x COM, 1xPS/2	2 x USB, 2 x COM, 1xPS/2	2 x USB, 2 x COM, 1xPS/2	2 x USB
Expansion Slots	14 slots/ 7 slots	14 slots/ 7 slots	14 slots/ 7 slots	7 slots
Indicators	1.Temperature 2.LAN 3.Fan	Power LED	Power LED	HDD LED
Buttons	1.Power switch 2.System reset	1.Power switch 2.System reset	1.Power switch 2.System reset	1.Power switch 2.System reset
Operating Shock	10G acceleration peak to peak (11ms)	10G acceleration peak to peak (11ms)	10G acceleration peak to peak (11ms)	10G acceleration peak to peak (11ms)
Operating Vibration	5~17Hz 0.1" double amplitude displacement 17~640 Hz 1.5G acceleration peak to peak	5~17Hz 0.1" double amplitude displacement 17~640 Hz 1.5G acceleration peak to peak	5~17Hz 0.1" double amplitude displacement 17~640 Hz 1.5G acceleration peak to peak	5~17Hz 0.1" double amplitude displacement 17~640 Hz 1.5G acceleration peak to peak
Operating Temp.	0 ~ 50°C	0 ~ 50°C	0 ~ 50°C	0 ~ 50°C
Operating Humidity	5 ~ 95% @ 60° C, non-condensing	5 ~ 95% @ 60° C, non-condensing	5 ~ 95% @ 60° C, non-condensing	5 ~ 95% @ 60° C, non-condensing
Color	Black	White	White	Black
Weight (Net / Gross)	15.3kg / 28.8kg	15kg / 18kg	15kg / 18kg	9.2Kg/13Kg
Dimension	480mm x 431mm x 176mm	528mm x 431mm x 176mm	470mm x 431mm x 220mm	280mm x 431mm x 176mm
Touch Screen	Optional 4-wire resistive type with RS-232 interface	Optional 5-wire resistive type with RS-232 interface	Optional 5-wire resistive type with RS-232 interface	4-wire resistive type with RS-232 interface
LCD Spec				
Size	6.5 "	8.4 "	12.1 "	6.5"/ 8.4"
Resolution	640 x 480 (VGA)	800 x 600 (SVGA)	800 x 600 (SVGA) 1024 x 768 (XGA)	640 x 480 800 x 600
Brightness	400 cd/m ²	220 cd/m ² (400 cd/m ²)	400 /450 cd/m ²	220 cd/m ² (400 cd/m ²)
Contrast	550:1	500:1 (400:1)	500:1/ 700:1	500:1 (400:1)
Viewing Angle	140 / 120	130 / 110 (120 / 100)	140 / 110 (160 / 160)	-
Backlight MTBF	50000 hrs	20000 hs (50000 hrs)	50000 hrs	-
LCD Color	262k	262k	262k	262K

- 1 Industrial Computer
- 2 Compact PCI
- 3 Embedded Computer
- 4 Panel PC/ LCD Monitor
- 5 Human Machine Interface
- 6 Digital Advertising
- 7 Serial & Wireless Connectivity
- 8 Digital Video Surveillance
- 9 Network Security Appliance
- 10 Data Acquisition & Control
- 11 Industrial RFID
- 12 Industrial Ethernet Switch
- 13 Medical PC
- 14 Power Supply
- 15 Accessories

Panel PC/ LCD Monitor

LCD KVM Switch

Anewtech KVM switch allows secure access to one or multiple computers from a single KVMA (Keyboard, video, mouse and audio) console in a system rack. The five-in-one space-saving design has either one or eight ports to be conveniently installed in 1U system rack.



Series	Anewtech LKM-926 Series	Anewtech LKM-927 Series	Anewtech LKM-935 Series (Dual-rail)
Description	15" LCD Monitor/Keyboard/Mouse/Speaker/ KVMA switch 5-in-1 1U Height Drawer	17" LCD Monitor/Keyboard/Mouse/Speaker/ KVMA switch 5-in-1 1U Height Drawer	15" LCD 5-in-1 1U Height Drawer with Individual Monitor and Keyboard module
Single Port	LKM-926G	LKM-927G	LKM-935G
Eight Port	LKM-9268G	LKM-9278G	LKM-9358G
Features	<ol style="list-style-type: none"> 1.Outstanding LCD Module : Channel change control, auto scan control, programmable station name 2.KVMA Switch :8 port KVMA switch can be manually or automatically set via LCD module 3.Standard support of English version keyboard. Optional Japanese, German, French, Italian version keyboard support 4.Embedded speaker can support alarm warning notice or audio application 5.Hot Pluggable - Add or remove computers without having to power down the switch 	<ol style="list-style-type: none"> 1. Integrated KVMA console (88 key keyboard and touchpad) with 17" LCD monitor in a 1U rack maximizes space in your control center 2. Supports up to 1280x 1024 resolution 3. Wide viewing angles: 160° wide viewing angle for easy viewing 4. Hot-pluggable capabilities enables the addition or removal of computers without having to power down the switch 5. Multiple languages supported: English, Japanese, German, French, Italian, Traditional Chinese, Spanish, and Russian version keyboard supported 6. Optional DC power input: 48VDC or 24VDC power input options for more mobile and server room applications 	<ol style="list-style-type: none"> 1. Outstanding LCD module: channel change control, auto scan control, editable station name 2. KVMA switch: 8 port KVMA switch can be manually or auto-metrically set via LCD module 3. Standard support of English version keyboard, Option Japanese, German, French, Italian version keyboard support 4. Embedded within speaker specified on alarm warning notice or audio application 5. Hot-pluggable-Add or remove computers without having to power down the switch 6. Individual Monitor and Keyboard module