

SBC82820

Socket 478 Intel® Pentium® M PCI CPU Card with DualView, Dual Ethernet and DVI

4

Single Board Computers



SBC Services and Solutions

System-on-a-Module Solutions

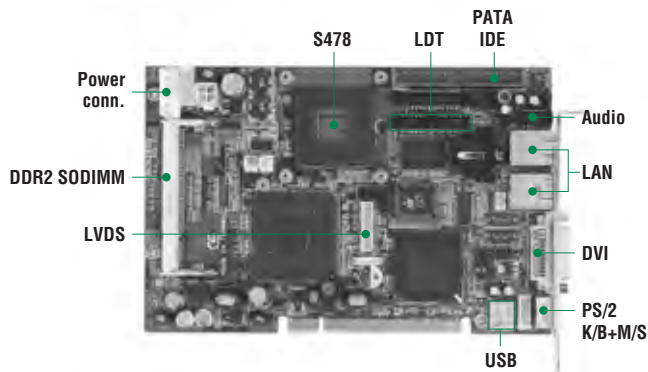
Embedded Single Board Computers

Industrial Motherboards

Slot CPU Cards

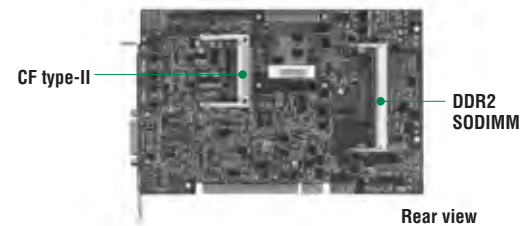
Accessories

Appendix



Features

- ▶ Ultra low power fanless Intel® Celeron® M processor
- ▶ Intel® 915GME/910GML+ICH6M chipset
- ▶ DualView with different content & resolution
- ▶ SATA-150 supported
- ▶ Dual Ethernet as Gigabit LAN



Rear view



Side view

System

CPU	Socket 478 or BGA onboard for Intel® Pentium® M and Celeron® M with 400/533 MHz
System Memory	2 x 200-pin DDR2-400/533 SODIMM max. up to 2GB
Chipset	Intel® 915GME/910GML+ICH6M
BIOS	4Mbit Flash with AXIOMTEK standard features; SmartView, RPL & PXE Ethernet Boot ROM
SSD	CompactFlash™ type-II
Watchdog Timer	System reset; 255 levels, 1~255 seconds
Expansion Interface	PICMG compliant PCI golden figure
Battery Lithium	3V/196 mAh
Size	185 x 122 mm
Temperature	0~60°C, operation
Operation Humidity	10% ~ 95% relative humidity, non-condensing

I/O

MIO	2 x SATA-150, 1 x PATA-100 IDE, 1 x K/B + M/S, 1 x RS-232, 1 x RS-232/422/485 with auto flow control via jumper selectable, 1 x LPT
Ethernet	2 x Realtek RTL8111B Gigabit Ethernet with RJ-45 connectors supports WOL via PCIe x1
Audio	AC'97 codec audio
USB	4 USB 2.0 ports

Display

Chipset	Integrated in Intel® 915GME/910GML
Memory Size	Max. up to 128MB frame buffer sharing system memory
Resolution	CRT: 2548 x 1536 (915GME) CRT: 2048 x 1536 (910GML) LVDS LCD: 1200 x 1600 DVI: 2048 x 1536
Output Interface	* LVDS LCD max. up to 48-bit output * DVI-I port combined with CRT

Packing List

Standard			
Quick installation guide, manual, driver, utility CD			
Cable			
Part Number	Description	SBC82820DGGA Qty	SBC82820DGGA-1G Qty
59382601000E	Ultra DMA66 IDE cable 40P 455mm	1	1
593826A0000E	SATA single cable 500mm	1	1
59384500000E	COM + printer cable w/ bracket 2.0 pitch	1	1
59382631000E	2 x USB 2.0 wafer cable w/ bracket 180mm	1	1
59384500100E	Audio cable w/ bracket 2.0 pitch 450mm	1	1

Ordering Information

Standard	
SBC82820DGGA	Socket 478 half-size SBC with DVI, dual Gigabit Ethernet and audio
SBC82820DGGA-1GE	Half-size SBC with Intel® Celeron® M 1GHz/ZC, DVI, dual Gigabit Ethernet and audio
Optional	
ATX6021/4	4-slot passive backplane
ATX6021/5	4-slot passive backplane
DVI adapter	DVI-to-CRT & DVI Y-cable
CK9A003	1 x audio cable, 4 USB 2.0 cable