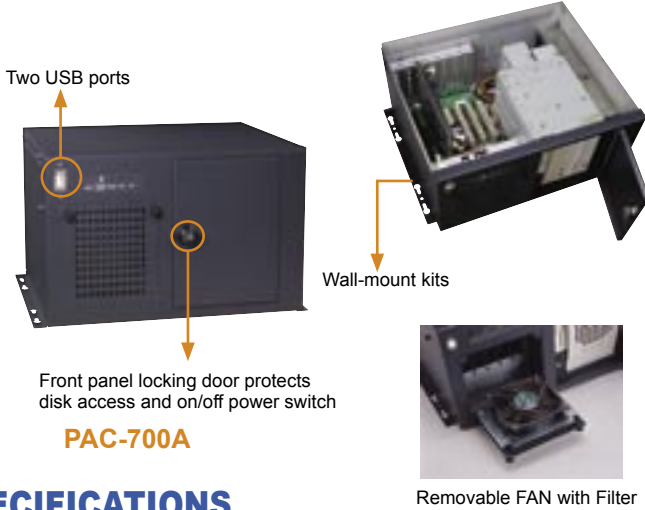


# PAC-700A PR-1300/1500A

7-slot Half-Size Industrial PC Chassis

3, 5-slot Half-size Industrial PC Chassis

*Pentium® 4 Solution Available!!*



**PR-1300**

**PR-1500A**



## SPECIFICATIONS

- ◆ Design to mount on Desktop and Wall mount
- ◆ Drive Bays : 1x3.5" FDD, 2x5.25" Drive space
- ◆ One 8cm ball bearing cooling Fan with removable filter
- ◆ Designed with fan fault detecting system
- ◆ Front panel equipped with two USB ports
- ◆ Optional Backplane :

Backplane	ISA/PCI/PCISA	Power Supply
BP-7S	7/0/0	ACE-916A
IP-7SA	2/4/1	ACE-816A / UPF200-AA
IP-7S	2/4/1	ACE-916A

- ◆ Standard equipped with Power Supply :  
ACE-816A 150W with ATX Power Supply  
ACE-916A 150W with AT power supply  
UPF200-AA 200W with ATX Power Supply(Support P4 system)

UPF200-AA	+3.3V	+5V	+12V	-5V	-12V	+5Vsb
Min Load	0.5A	1A	1A	-	-	-
Max Load	9A	21A	10A	0.3A	0.8A	2A
Remark	+3.3V & +5V total 110W					
	+3.3V & +5V & +12V total 180W					

- ◆ Optional Power Supply :  
ACE-830CU1/TU1/VU1, ACE-816AP/815C/815T ATX Power Supply  
ACE-916AP AT Power Supply
- ◆ Vibration : 5~17Hz, 0.1" double amplitude displacement  
17~640 Hz, 1.5G acceleration part to part
- ◆ Shock : 10G acceleration part to part (11ms)
- ◆ Color : Dark Blue (PANTONE 433C)
- ◆ Dimension : 321mm(W)x178mm(H)x 260mm(D)

## ORDERING INFORMATION

- **PAC-700A/IP-7SA/ACE-816A :**  
7-Slot half-size Industrial compact chassis with ACE-816A 150W ATX Power Supply and IP-7SA Backplane
- **PAC-700A/BP-7S/ACE-916A :**  
7-Slot half-size Industrial compact chassis with ACE-916A 150W AT Power Supply and BP-7S Backplane
- **PAC-700A/IP-7SA/UPF200-AA :**  
7-Slot half-size Industrial compact chassis with UPF200-AA200W ATX Power Supply and IP-7SA Backplane, support P4 system

## SPECIFICATIONS

- ◆ Desk Top or Wall mount
- ◆ Drive Bays :  
PR-1300: 1x3.5" FDD  
PR-1500A: 1x3.5" FDD, 1x3.5" HDD, 1xslim type CD-ROM
- ◆ One 6cm fan with filter (PR-1300)  
One 8cm fan with filter (PR-1500A)
- ◆ Support Backplane:  
PR-1300: BP-3S, IP-3S, IP-3S2 (AT power supply)  
IP-3SA (ATX power supply)  
PR-1500A: BP-5S, IP-5S, IP-5S2 (AT power supply)  
IP-5SA, IP-5SA2 (ATX power supply)
- ◆ Standard Power Supply:  
ACE-816A 150W ATX PSU  
ACE-916A 150W AT PSU  
UPF200-AA 200W ATX PSU for P4 system (PR-1500A)
- ◆ Optional Power Supply:  
ACE-916AP 150W AT PSU with PFC function  
ACE-816AP 150W ATX PSU with PFC function  
ACE-830VU1/CU1/TU1 12V/24V/48V DC Input ATX PSU (PR-1500A)
- ◆ Colors: White (PANTONE 413C)
- ◆ Vibration : 5-17Hz, 0.1" double amplitude displacement  
17-640Hz, 1.5G acceleration peak to peak
- ◆ Shock : 10G acceleration peak to peak (11ms)
- ◆ Dimensions: PR-1300: 266(W) x 88(H) x 254(D)mm  
PR-1500A: 286(W) x 132(H) x 254(D)mm
- ◆ Net/GW (kg): 4/6(PR-1300), 5/7(PR-1500A)

## ORDERING INFORMATION

- **PR-1300W / Backplane / Power Supply**  
BP-3S or IP-3SA    ACE-916A or ACE-816A
- **PR-1500AW / Power Supply**  
ACE-916A or ACE-816A or UPF200-AA