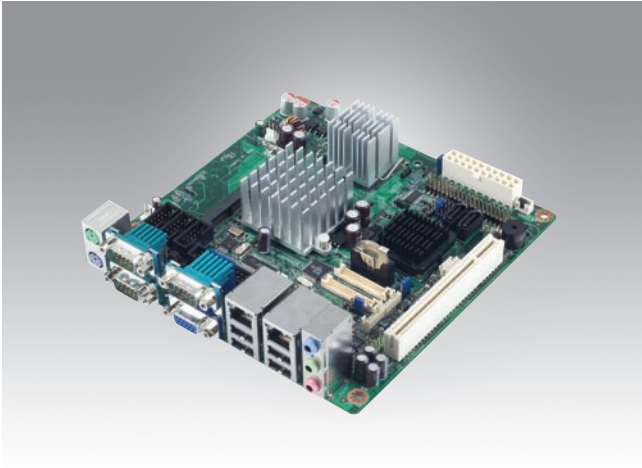


AIMB-210

Intel® ATOM™ Mini-ITX with VGA/LVDS,
6 COM, and Dual LAN



Features

- Intel® ATOM Mini-ITX motherboard supports N270 1.6 GHz processor
- Intel 945GSE and ICH7M
- One 200-pin SODIMM up to 2 GB DDR2 533 SDRAM
- Supports dual display for VGA, LVDS, and TV-Out
- Supports dual GbE LAN
- Built with 6 serial ports, 8 USB, and CF
- Supports 1 PCI expansion
- Onboard TPM 1.2 support



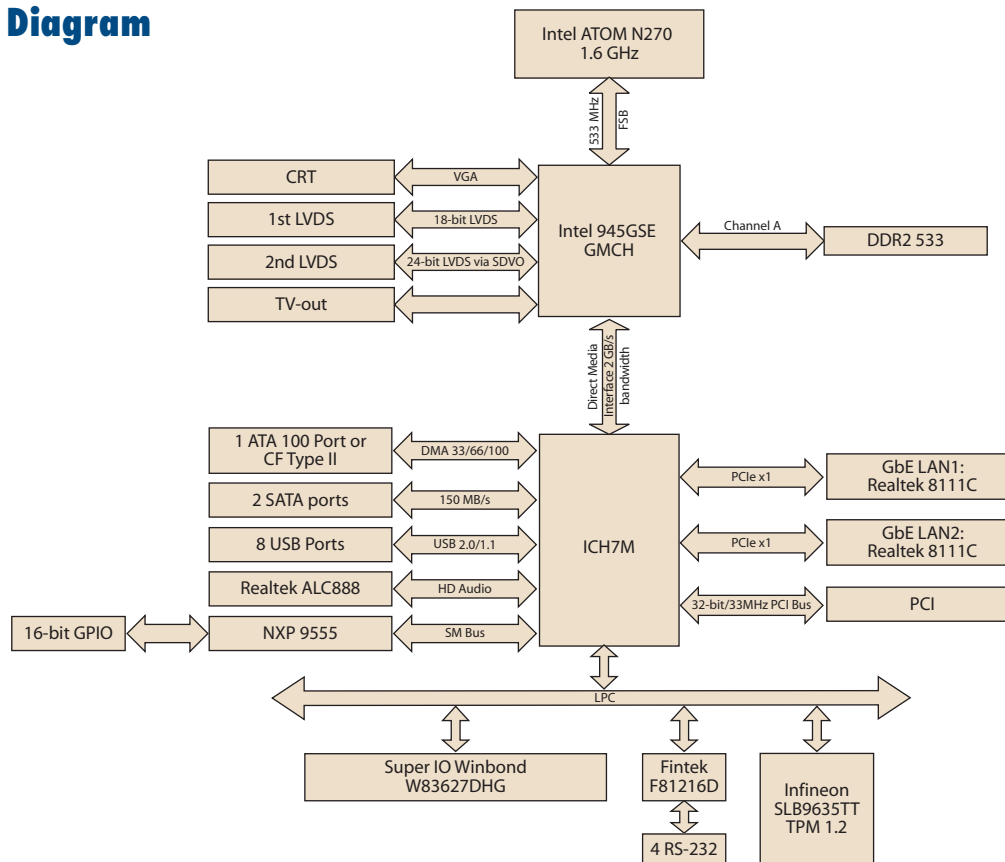
Specifications

Processor System	CPU (45 nm)	Intel ATOM N270				
	Max. Speed	1.6 GHz				
	Front Side Bus	533 MHz				
	L2 Cache	512 KB				
	Chipset	Intel 945GSE + ICH7M				
	BIOS	Award 16 Mbit, SPI				
Expansion Slot	PCI	32-bit/33 MHz, 1 slot				
	Mini-PCI	-				
	PCIe	-				
Memory	Technology	Single channel DDR2 533 MHz				
	Max. Capacity	2 GB				
	Socket	1 x 200-pin SODIMM				
Graphics	Controller	Intel 945GSE GMCH integrated Graphic Media Accelerator 950				
	VRAM	Shared system memory up to 224 MB SDRAM				
	1st LVDS	Single channel 18-bit/Dual channel 36-bit LVDS				
	2nd LVDS	Single channel 18/24-bit/Dual channel 36/48-bit LVDS, via Chronitel 7308B SDVO transmitter (F version)				
	TV-Out	Supports both S-video and composite video (TV-Out function is not supported during POST stage)				
Ethernet	Interface	10/100/1000 Mbps				
	Controller	GbE LAN1: Realtek 8111C; GbE LAN2: Realtek 8111C				
SATA	Max Data Transfer Rate	150 MB/s				
	Channel	2				
EIDE	Mode	EIDE (Ultra DMA 100)				
	Channel	1				
SSD	CompactFlash	Supports CompactFlash Type I/II				
Rear I/O	VGA	1				
	Ethernet	2				
	USB	4 (USB 2.0 compliant)				
	Audio	3 (Mic-in, Line-out, Line-in)				
	Serial	3 (2 of RS-232, 1 of RS-232/422/485)				
	Parallel	-				
	PS/2	2 (1 x keyboard and 1 x mouse)				
Internal Connector	LVDS & Inverter	1				
	USB	4 (USB 2.0 compliant)				
	Serial	3 (RS-232)				
	IDE	1				
	SATA	2				
	CompactFlash	1				
	Parallel	1				
Watchdog Timer	DIO	16-bit GPIO				
	Output	System reset				
Power Requirement	Interval	Programmable 1 ~ 255 sec/min				
	Power On	1.6 GHz ATOM processor, 2 GB DDR2 SDRAM				
		+5 V	+3.3 V	+12 V	-12 V	+5 VSB
		1.96 A	1.21 A	0.19 A	0.06 A	0.28 A
		Operating	Non-Operating			
Environment	Temperature	0 ~ 60° C (32 ~ 140° F)			-20 ~ 70° C (-4 ~ 158° F)	
	Physical Characteristics	Dimensions	170 mm x 170 mm (6.69" x 6.69")			

* Minimum order quantity is required.



Board Diagram



Ordering Information

Part Number	CPU	Chipset	GbE	COM	LVDS	TV-out	TPM
AIMB-210G2-S6A1E	ATOM 1.6 GHz	945GSE	2	6	1, 18-bit	Yes	None
AIMB-210F-S6A1E	ATOM 1.6 GHz	945GSE	2	6	2, 18/24-bit	Yes	Yes

Riser Card

Part Number	Description
AIMB-RP30P-03A1E	2U riser card with 3 PCI slot expansion

Bracket View



Packing List

Description	Quantity
AIMB-210 SBC	x 1
IDE HDD cable (40-pin)	x 1
SATA HDD cable	x 2
SATA power cable	x 2
Serial port cable	x 3
CPU cooler	x 1
I/O port bracket	x 1
Startup manual	x 1
Driver CD	x 1

Accessories

Part Number	Description
1700003195	USB cable with four ports, 17.5 cm
1700002204	USB cable with four ports, 27 cm
1700002314	USB cable with four ports, 30.5 cm
1700008809	Printer port cable, 25 cm, w/bracket
1700002331	TV-out cable