

# Digi TransPort® DR

Branch-in-a-Box Enterprise Class Cellular Routers

Cellular routers with integrated DSL and Wi-Fi provide advanced routing/security for all-in-one primary and backup connectivity to remote locations and devices.



## Overview

Digi TransPort DR cellular routers provide secure high speed wireless connectivity to remote sites and devices for primary or backup wireless broadband network connectivity. These multifunction cellular routers feature a flexible design with a variety of configuration options, including multiple serial ports (async or sync) or Wi-Fi modules, in addition to standard features like USB, serial and Ethernet.

Digi TransPort DR offers true advanced routing, firewall and security features including stateful firewall inspection and VPN. Enterprise-class protocols incorporate BGP, OSPF and VRRP+, a patented technology built upon the popular VRRP failover standard providing true auto sensing, auto failure and auto recovery of any line drop.

Most notably, the Digi TransPort DR features a built-in DSL modem for primary connectivity to remote sites, with failover to cellular or optional PSTN for maximum network uptime. Integrated 802.11b/g Wi-Fi is also available. The router can be paired with the Digi TransPort VC7400 enterprise VPN concentrator for secure end-to-end connectivity for large numbers of remote devices and networks.

### Related Products



Digi TransPort®  
VC7400

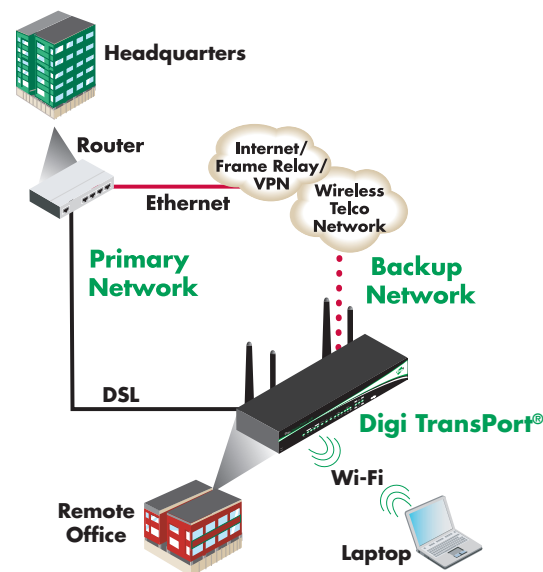


Digi Remote  
Manager™



Accessories

### Application Highlight



### Features/Benefits

- Enterprise class cellular routers with advanced dynamic routing, security and firewall features
- High speed cellular interfaces: GSM GPRS/EDGE/ HSPA and CDMA EV-DO
- Branch-in-a-box focus with available DSL to cellular failover
- Synchronous protocol support for legacy retail/ financial devices
- Flexible interfaces including serial (async/sync), Wi-Fi and USB
- Powerful integrated end user programming

## Interfaces

## Serial

Async Port Type	6 RJ-45 RS-422/X.21 (Option), Varies by model type
Sync Port Type	1 Sync/Async DB-25 RS-232, 2 Sync/Async DB-25 RS-232, Varies by model type
Signal Support	TXD, RXD, RTS, CTS, DTR, DSR, DCD, RI (No DSR/RI for RJ-45)
Flow Control	Software (XON/XOFF), Hardware (RTS/CTS)

## Ethernet

Ports	4-port auto switch with auto MDI/MDX option
Specifications	IEEE 802.3 10/100 Base-T (auto-sensing) Full or Half duplex

## Cellular Interfaces

GSM GPRS/EDGE	Yes
EV-DO	Yes
HSPA/UMTS	Yes

## Other Interfaces

PSTN	PSTN V.92 fast train modem RJ-11
ADSL	ADSL, ADSL2, ADSL2+, ADSL2++, (quad spectrum downstream/double upstream), T1.413, TR-048, UR-2 compliant
Wi-Fi (Option)	802.11b/g; WPA/WPA2, Open or Shared key authentication; WEP (64 and 128 bit) encryption; WPA/WPA2 authentication (pre-shared keys) with TKIP and AES encryption
USB Host Port	2 Type A connector for expansion

## General Features

Status LEDs	Ethernet, Power on, Cellular link/Activity, Signal strength
Other	SIM removal protection (option); 2 50 ohm SMA male antenna; DIN rail and wall mounting options; Modbus TCP
Security/VPN	RADIUS, TACACS+, SSL, SSLv2, SSLv3, FIPS 197, L2TP, (5 tunnels included - 50 max.); IPSec with IKEv1, IKEv2, ISAKMP; DES, 3DES and AES up to 256-bit encryption; Simple Certificate Enrollment Protocol (SCEP) for X.509 certificates, Open VPN and PPTP; IPSec/PPP/L2TP VPN Server support; IP pass-through
Router/Firewall	NAT/NAT-Traversal, NAPT forwarding; IP Routing Protocols: PPP, GRE, RIP (v1 & v2), OSPF, SRI, BGP; IP Failover: VRRP, VRRP+™; VLAN support; Stateful inspection firewall with scripting; Access control lists; Modbus over UDP/TCP; DHCP; SNAIP; Dynamic DNS client compatible with BIND9/No-IP/DynDNS; Automatic failover/failback to second GSM network/Standby APN
Sync/Specialty	Sync tunneling: LAPB, RAW SNA; X.25/X.28; TPAD, APACS30, X.25, X.28, PAD, X.29, X.31, X.21, XOT, Datawire VXN™, SSL
Management	HTTP, HTTPS, FTP, SFTP, SSL, SMTP, SNMP (v1/v2c/v3), SSH, Telnet and CLI for web management; Remote management via software tool (option); SMS management, protocol analyzer and ability to capture PCAP files for use with Wireshark
Local Programming	Custom scripting development platforms (Python and ScriptBasic)
Dimensions (L x W x H)/	5.9 in x 9.4 in x 1.4 in* (15 cm x 24 cm x 3.5 cm), *Height of DR6460/DR6420 models is 1.9 in (4.7 cm)
Weight	2.0 lb (0.9 kg)

# Specifications

# Digi TransPort® DR

## RF Features

### GSM Models

HSDPA/HSUPA/UMTS	Tri-band 850/1900/2100 MHz with Rx Diversity
Antenna	GPRS and EDGE: 1 x 50 Ω SMA male antenna

### CDMA Models

EV-DO Rev A	Dualband 800/1900 MHz with Rx Diversity
Antenna	2 x 50 Ω SMA male antennas

## Power Requirements

Power Input	12VDC
Power Supply	Supplied with universal 100-240VAC 50/60 Hz plug-top mains adaptor
Power Consumption	Typical: 6.0W, Max: 10W

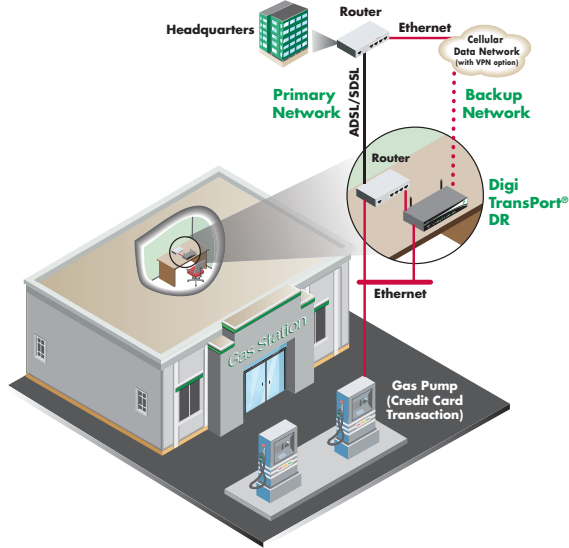
## Environmental

Operating Temperature	-20° C to +55° C -25° C to +70° C with reduced cellular performance
Relative Humidity	20% to 95% (non-condensing)
Ethernet Isolation	1.5 kV
Serial Port Protection (ESD)	15 kV

## Approvals

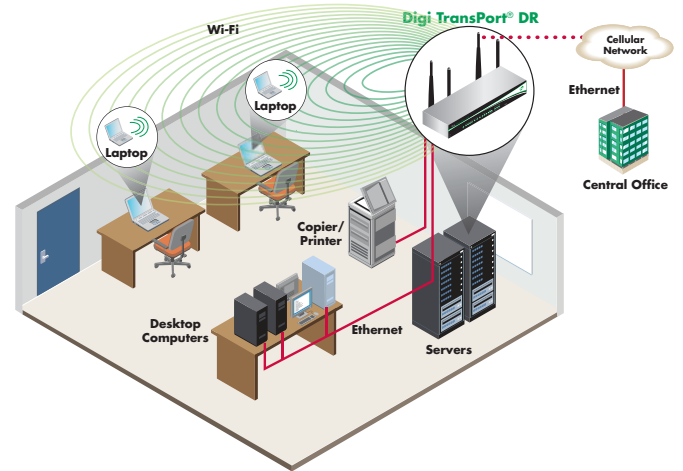
Mobile Certifications - GSM/UMTS	PTCRB, NAPRD.03, GCF-CC, R&TTE, EN 301 511
Mobile Certifications - CDMA/EV-DO	CDG TIA/EIA-690, CDG TIA/EIA-98-E
Wireless Carrier Certifications	Certified by most major carriers. See <a href="http://www.digi.com">www.digi.com</a> for current listing.
Safety	UL 60950, CSA 22.2 No. 60950, EN60950
Emissions/Immunity	CE, FCC Part 15 Class A (FCC identifier GGL-R1902G), AS/NZS CISPR 22, EN55024, EN55022 Class B

## Enterprise Class Routers



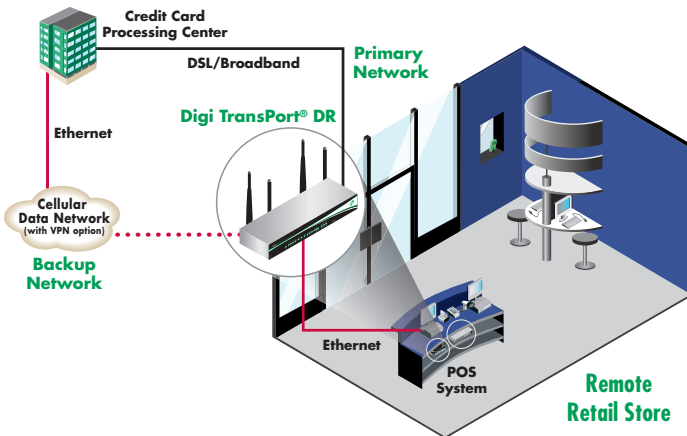
Advanced routing, security and firewall features for enterprise connectivity to remote sites and devices.

## Branch-in-a-Box



Multi-purpose routers with integrated backup options provide both primary and failover routing interfaces and protocols for seamless connectivity during network outages.

## Specialty Protocols



Specialized support for POS/ synchronous protocols, enabling transparent integration across cellular networks.

## DR Models



4-Port Ethernet Switch, 1 Sync/Async Serial DB-25, Wi-Fi (optional)



4-Port Ethernet Switch, 2 Sync/Async Serial DB-25, Wi-Fi (optional)



4-Port Ethernet Switch, 6 Async Serial RJ-45, Wi-Fi (optional)