

ENTERPRISE-CLASS  
CELLULAR ROUTERS FOR  
RUGGED APPLICATIONS



# DIGI TRANSPORT® WR44 R

All-in-one cellular router with advanced routing and VPN features, designed specifically for use in rugged environments

The Digi TransPort WR44 R is a rugged, all-in-one 4G LTE Advanced mobile communications solution with true enterprise-class routing, security and firewall. Featuring a heavy-duty cast aluminum enclosure, it offers a flexible interface design with an optional integrated Wi-Fi access point (with multi SSID), USB, serial and 4-port Ethernet switch, as well as a variety of configuration options including GPS and CAN support.

These routers are ideal for transportation and mobile applications. Flexible power options include 9-36 VDC locking barrel or automotive Molex connectors for direct integration into vehicle applications. Also ideal for mobile

applications is the cellular to Wi-Fi autoswitch feature, which uses the highest speed/lowest cost WAN network available.

All Digi TransPort products offer an advanced routing, security and firewall feature set including stateful inspection firewall and integrated VPN. Enterprise class protocols incorporate BGP, OSPF and VRRP+. Advanced features allow the Digi TransPort to be used as a component of a PCI compliant network.

Digi Remote Manager® provides easy setup, configuration and maintenance of large installations of Digi TransPort and third-party devices.

## BENEFITS

- Rugged, enterprise-class cellular routers with advanced dynamic routing, security and firewall features
- Heavy-duty cast aluminum enclosure for reliable performance in rugged environments
- Integrated 802.11 ac/a/b/g/n; a/n Wi-Fi access point (optional) and 4-port Ethernet switch
- Flexible interfaces including GPS and CAN with DC power options
- Cellular to Wi-Fi autoswitch feature automatically uses the highest speed/lowest cost WAN network available
- Digi Remote Manager® provides mass configuration, device management and troubleshooting tools

## RELATED PRODUCTS



Digi TransPort®  
WR11 XT



Digi TransPort®  
WR21



Digi TransPort®  
WR44 RR

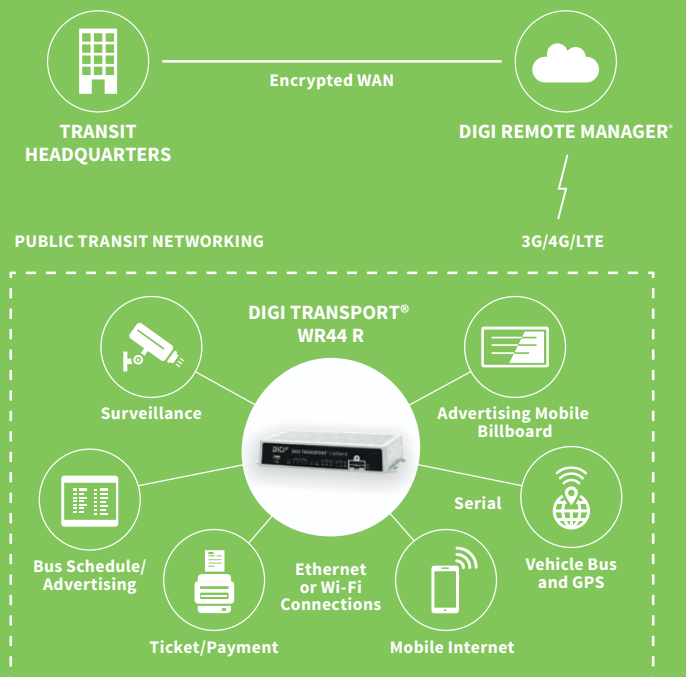


Accessories



Digi Remote  
Manager®

## APPLICATION EXAMPLE



## SPECIFICATIONS

## Digi TransPort® WR44 R

## WIRELESS INTERFACES

## CELLULAR\*

<b>LTE - NORTH AMERICA/EMEA (M8)</b>	LTE Advanced CAT 6: 700(B12,B13,B29)/800(B20,B26)/850(B5)/900(B8)/AWS(B4)/1800(B3)/1900(B2,B25)/2100(B1)/2300(B30)/2500(B41)/2600(B7) 3G HSPA+: 850/900/AWS/1800/1900/2100 MHz Transfer rate (max): 300 Mbps down, 50 Mbps up Approvals: PTCRB, AT&T, Verizon, Vodafone (pending)
<b>LTE - ANZ/LATAM (L9)</b>	LTE-Advanced CAT 6: 700(B28)/850(B5,B18,B19)/900(B8)/1500(B21)/1800(B3)/1900(B39)/2100(B1)/2600(B7,B38)/2300(B40)/2500(B41) 3G HSPA+: 800/850/900/1700/2100 MHz Transfer rate (max): 300 Mbps down, 50 Mbps up
<b>LTE - EMEA/APAC (M2)</b>	LTE CAT 3: 450(B31)/800(B20)/1800(B3)/2600 (B7) HSPA+: 900/2100 MHz EDGE: 900/1800 MHz Transfer rate (max): 100 Mbps down, 50 Mbps up
<b>CONNECTOR</b>	(2) 50 Ω SMA (Center pin: female)
<b>SIM SLOTS</b>	(2) Mini-SIM (2FF)
<b>SIM SECURITY</b>	SIM slot cover plate

## WI-FI\*\*

<b>STANDARD</b>	802.11 ac/a/b/g/n 2.4/5 GHz
<b>MODES</b>	Access point, client and support for multiple SSID
<b>TRANSMIT POWER</b>	20 dBm + 1.0/-1.5 dBm
<b>RECEIVE SENSITIVITY</b>	54 Mbps / <-72 dBm and 11 Mbps / -90 dBm
<b>SECURITY</b>	Open or shared key authentication; WEP (64- and 128-bit) encryption; WPA/WPA2 with RADIUS (WPA enterprise and pre-shared keys)
<b>CONNECTORS</b>	(2) 50 Ω RP-SMA (center pin: male)

## GPS\*\*

<b>CHANNELS</b>	50
<b>SENSITIVITY</b>	-163 dB
<b>PROTOCOL</b>	NMEA 0183 V2.3 sentence output; +3.3 VDC active antenna drive; NMEA stream to local serial port or over TCP/IP
<b>NAVIGATION</b>	Galileo ready
<b>AUGMENTATION</b>	SBAS
<b>COLD START</b>	< 27 seconds TTFF (90%)
<b>HORIZONTAL ACCURACY</b>	< 2.5 meters (90%)
<b>VELOCITY ACCURACY</b>	0.1m/s
<b>CONNECTOR</b>	(1) 50 Ω SMA (Center pin: female)
<b>ADDITIONAL FEATURES</b>	Send GPS via UDP/IP, TCP/IP (up to two destinations) or serial; Customize and/or send data using Python; GPS status query; Time source capable

## WIRED INTERFACES

## SERIAL

<b>PORTS</b>	(1) DB-9; DCE
<b>STANDARD</b>	RS-232
<b>SIGNAL SUPPORT</b>	TXD, RXD, RTS, CTS, DTR, DCD, DSR, RI
<b>FLOW CONTROL</b>	Software (XON/XOFF), hardware supported

## ETHERNET

<b>PORTS</b>	(4) RJ-45; 10/100 Mbps (auto-sensing)
--------------	---------------------------------------

## USB

<b>PORTS</b>	(1) USB 2.0 Type A
--------------	--------------------

## OTHER

<b>EXPANSION CARDS</b>	Option of fleet expansion card
------------------------	--------------------------------

\* Transfer rates are network operator dependent.

\*\* Optional hardware.

## SPECIFICATIONS

## Digi TransPort® WR44 R

### SOFTWARE

<b>REMOTE MANAGEMENT</b>	Digi Remote Manager® (cloud based); SNMP v1/v2c/v3 (user installed/managed)
<b>LOCAL MANAGEMENT</b>	Web interface (HTTP/HTTPS); CLI (Telnet, SSH, SMS, Serial port)
<b>MANAGEMENT/TROUBLESHOOTING TOOLS</b>	FTP, SFTP, SCP, protocol analyzer with PCAP for Wireshark, event logging with Syslog and SMTP, NTP/SNTP
<b>MEMORY</b>	128 MB NAND Flash/64 MB DDR2 SDRAM

### POWER

<b>INPUT</b>	9 – 36 VDC
<b>CONSUMPTION</b>	15W max, 8.5W typical
<b>CONNECTOR</b>	Locking barrel and 4-pin terminal block (2 pins are used for power; the other 2 pins are used for I/O)

### PHYSICAL

<b>DIMENSIONS (L X W X H)</b>	5.5 in x 10 in x 1.9 in (140 mm x 254 mm x 48 mm)
<b>WEIGHT</b>	2.4 lbs (1.1 kg)
<b>STATUS LEDS</b>	Power, LAN, Wi-Fi, Serial, WWAN (Link, Act, SIM), signal strength
<b>MATERIAL/RATING</b>	Aluminum alloy / IP30
<b>MOUNTING</b>	(4) mounting slots on the unit's flange

### ENVIRONMENTAL

<b>OPERATING TEMPERATURE</b>	Non-Wi-Fi variants: -40° C to +70° C; Single-Wi-Fi variants: -20° C to +70° C; Dual-Wi-Fi variants: -20° C to +60° C; (Reduced cellular performance may occur above +60° C)
<b>STORAGE TEMPERATURE</b>	-40° C to +85° C
<b>RELATIVE HUMIDITY</b>	0% to 95% (non-condensing) @ 25° C
<b>ETHERNET ISOLATION</b>	1.5 kV RMS
<b>SERIAL PORT PROTECTION (ESD)</b>	15 kV

### APPROVALS

<b>CELLULAR</b>	PTCRB, NAPRD.03, GCF-CC, R&TTE, EN 301 511
<b>CDMA/EV-DO</b>	CDG TIA/EIA-690, CDG TIA/EIA-98-E
<b>SAFETY</b>	UL 60950, CSA 22.2 No. 60950, EN60950
<b>EMISSIONS/IMMUNITY</b>	CE, FCC Part 15 Class B, AS/NZS CISPR 22, EN55024, EN55022 Class B

### INDUSTRY

EN 300 019-2-5 (specification for environmental tests for ground vehicle installations - covers temperature, humidity, vibration and shock)

### WARRANTY

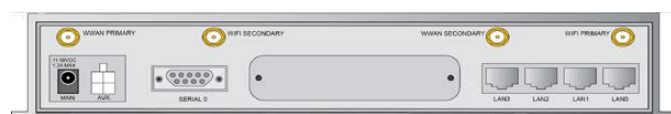
<b>PRODUCT WARRANTY</b>	3 years
-------------------------	---------

## ENTERPRISE SOFTWARE

## DESCRIPTION

<b>PROTOCOLS</b>	HTTP, HTTPS, FTP, SFTP, SSL, SMTP, SNMP (v1/v2c/v3), SSH, Telnet and CLI for web management; Remote management via Digi Remote Manager; SMS management, protocol analyzer, ability to capture PCAP for use with Wireshark; DynDNS; Dynamic DNS client compatible with BIND9/No-IP/DynDNS
<b>SECURITY/VPN</b>	Stateful inspection firewall with scripting, address and port translation; VPN: IPSec with IKEv1, IKEv2, NAT Traversal; SSL, SSLv2, FIPS 197, open VPN client and server; PPTP, L2TP; (5) VPN tunnels (upgradable to a maximum of 200); Cryptology: SHA-1, MD5, RSA; Encryption: DES, 3DES and AES up to 256-bit; Authentication: RADIUS, TACACS+, SCEP for X.509 certificates; Content filtering (via 3rd party); MAC address filtering; VLAN support; Ethernet port isolation
<b>ROUTING/FAILOVER</b>	IP pass-through; NAT, NAPT with IP port forwarding; Ethernet bridging; GRE; Multicast routing; Routing protocols: PPP, PPPoE, RIP (v1, v2) OSPF, SRI, BGP, iGMP routing (multicast); RSTP (Rapid Spanning Tree Protocol); IP failover: VRRP, VRRP+TM; Automatic failover/failback to second GSM network/standby APN
<b>OTHER PROTOCOLS</b>	DHCP; Dynamic DNS client compatible with BIND9/No-IP/DynDNS; QoS via TOS/DSCP/WRED; Modbus UDP/TCP to serial; X.25 including XOT, SNA/IP, TPAD and PAD; Protocol switch; Modbus bridging for connecting diverse field assets

## PRODUCT IMAGES

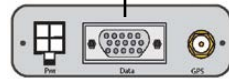


## SPECIFICATIONS

## Connector | Specification



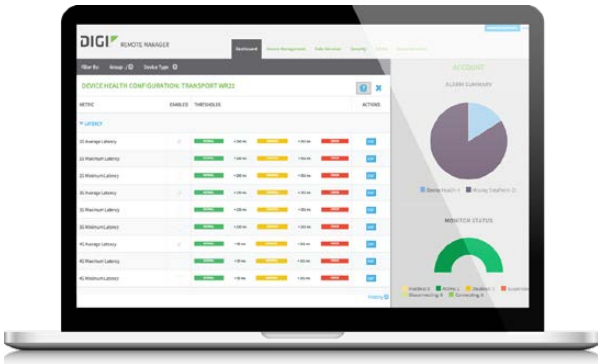
### FLEET (F1)



(1) 4-pin, (1) 15-pin, (1) SMA

Flexible transportation/fleet focused applications requiring CAN bus, J1708, GPS, Non-isolated digital I/O, Ignition Sense, 3-Axis accelerometer, and power control of Digi TransPort interfaces. Fully programmable via Python for embedded Digi TransPort applications.

## DIGI REMOTE MANAGER®



### CAPABILITIES

- Centralized management of remote devices over 3G/4G/LTE
- Define standard configurations and automatically monitor individual devices for PCI security compliance
- Report and alert on performance statistics, including connection history, signal quality, latency, data usage and packet loss
- No servers or applications to operate and maintain
- Complete tasks for your entire device network in minutes
- Edit configurations and update firmware for your individual devices or groups
- Monitor the status and location of your remote device via a web browser
- Active or deactivate cellular lines and monitor data to ensure you never incur overage charges

### INFRASTRUCTURE

- Hosted in a commercial-grade SAS 70-certified environment
- Superior availability, operating to 99.9% or greater
- Open APIs available to support application development

### SECURITY

- Certified SSAE-16 facilities
- Over 175 Security Controls in place to protect your data
- Enables compliance with security frameworks like PCI, HIPAA, NIST and more
- Earned SkyHigh's Cloud Trust Program highest ranking of Enterprise-Ready

## PART NUMBERS

## DIGI TRANSPORT WR44 R

WR44-M800-AE1-RF	4G LTE North America/EMEA	Wi-Fi, Antennas not Included
WR44-M8F1-AE1-RF		Wi-Fi, GPS, CAN, Antennas not Included
WR44-L900-AE1-RF	4G LTE LATAM/ANZ	Wi-Fi, Antennas not Included
WR44-L9F1-AE1-RF		Wi-Fi, GPS, CAN, Antennas not Included
WR44-M2F1-NE1-RF	4G LTE EMEA/APAC (450MHz)	Wi-Fi, GPS, CAN, Antennas not included

## PART NUMBERS

## ACCESSORIES\*

76000982	Accessory Kit (CANBus Serial Cable, Power Cord, and 14-pin I/O Connector)
----------	---

\*Sold separately, unless otherwise noted.