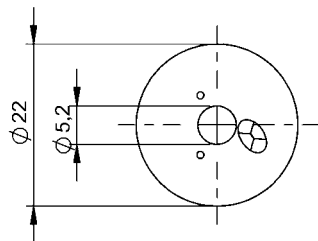
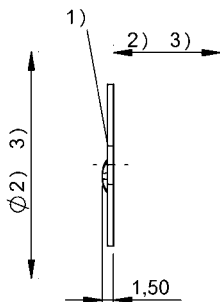


HF (13.56 MHz)
BIS M-181-10/L
 Order Code: BIS00WU

BALLUFF



- 1) Sensing surface
- 2) Clear zone
- 3) see corresponding R/W head
- 4) Tightening torque



Basic features

Antenna type	round
Approval/Conformity	CE WEEE EAC
EN 55011	Size 1, Cl. A
EN 55022	Size 1, Cl. B
Principle of operation	Data carrier

Electrical data

Data retention time/years	≥ 10
Memory organization	47 × 16 bytes
Programming cycles	≥ 100.000
Programming time	for 16 bytes: 0.040s
Read cycles	Unlimited
Read time	User ID for 4 bytes: 0.02s for 16 bytes: 0.02 s

Environmental conditions

Ambient temperature	-20...85 °C
Continuous shock load	yes
EN 60068-2-27, Shock	yes
EN 60068-2-32 Free fall	yes
EN 60068-2-6, Vibration	yes
Storage temperature	-40...85 °C

HF (13.56 MHz)
BIS M-181-10/L
Order Code: BIS00WU

BALLUFF

Functional Characteristics

Memory type	EEPROM
UID serial number, read-only	4 Byte
User data, read/write	736 Byte

Material

Material	PCB
----------	-----

Remarks

Values are under rated conditions unless otherwise specified.
Only when used together with the appropriate read/write head.
For installation requirements see corresponding read/write head.
Time specification includes data check.
For installation in metal: Observe clear zone.

Mechanical data

Application weight	1.00 g
Dimension	Ø 22 x 1.5 mm
Installation	metal-free (clear zone)