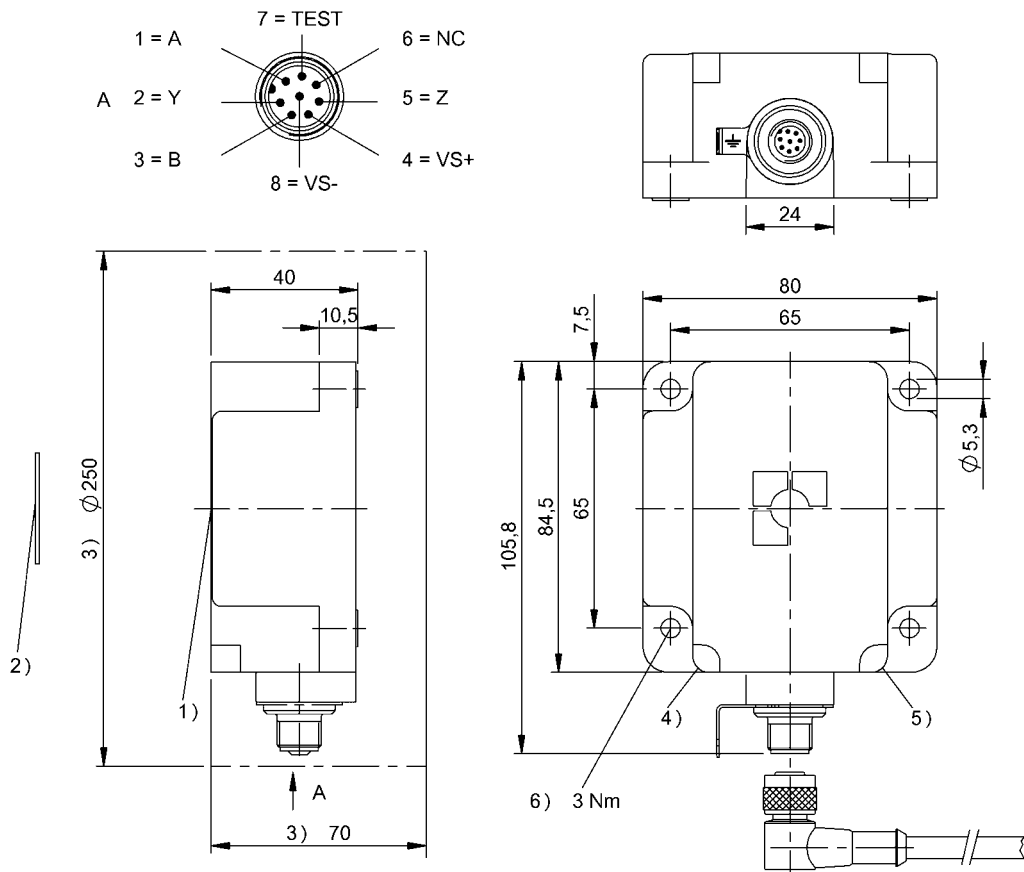


HF (13.56 MHz)
BIS M-341-001-S115
 Order Code: BIS00M6

BALLUFF



- 1) Sensing surface
- 2) Data carrier
- 3) Clear zone
- 4) LED (Power)
- 5) LED (TP)



Basic features

Antenna type	round
Approval/Conformity	CE FCC Part 15 IC RSS-210 cULus EAC WEEE
Principle of operation	Read/write head

Display/Operation

Function indicator	LED yellow TP (Tag Present) Green LED Power (ON)
--------------------	---

Electrical connection

Connection	Male, 8-pin
------------	-------------

Electrical data

EN 300330-1	Power Class 5
-------------	---------------

Environmental conditions

Ambient temperature	0...70 °C
Continuous shock load	yes
EN 60068-2-27, Shock	yes
EN 60068-2-32 Free fall	yes
EN 60068-2-6, Vibration	yes
IP rating	IP67
Storage temperature	-20...85 °C

HF (13.56 MHz)
BIS M-341-001-S115
Order Code: BIS00M6

BALLUFF

Functional Characteristics

Supported data carrier types	DIN ISO 14443 DIN ISO 15693
------------------------------	--------------------------------------

Functional safety

MTTF (40 °C)	242 a
--------------	-------

Material

Housing material	PBT
------------------	-----

Mechanical data

Application weight	360.00 g
Dimension	80 x 40 x 84.5 mm
Installation	metal-free (clear zone)

Remarks

For installation in metal: Observe clear zone.
Values are under rated conditions unless otherwise specified.
Only together with BIS M-6xxx
Only for data carriers acc. to ISO 15693.
For basic equipment: Accessories see www.balluff.com
For more information about MTTF and B10d see MTTF / B10d Certificate

Indication of the MTTF- / B10d value does not represent a binding composition and/or life expectancy assurance; these are simply experiential values with no warranty implications. These declared values also do not extend the expiration period for defect claims or affect it in any way.

Help Views

HF (13.56 MHz)

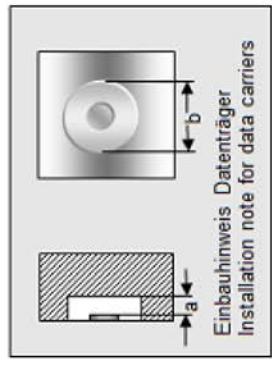
BIS M-341-001-S115

Order Code: BIS00M6

BALLUFF

BIS M-341-__

passende Datenträger Appropriate data carriers	BIS M-112-02/L	BIS M-108-02/L	
Abstand Datenträger zu Metall in mm (a) Data carrier distance to metal in mm	>50	>50	>0
Freizone Datenträger in mm (b) Data carrier clear zone in mm	>200	>200	>0
Schreibabstand in mm Write distance in mm	35-90	20-60	0-50
Leseabstand in mm Read distance in mm	35-90	20-60	0-50
Versatz in mm bei Abstand von			
0			±30
5			±30
9			±30
12			±30
15			±30
16			±30
18			±30
20			±35 ±30
22			±35 ±30
25			±35 ±30
30			±35 ±30
35			±30 ±20
40			±30 ±20
45			±30 ±20
50			±30 ±20
60			±30
70			
80			
90			



HF (13.56 MHz)

BIS M-341-001-S115

Order Code: BIS00M6

BALLUFF

BIS M-341-__

	BIS M-140-02/A- xx	BIS M-142-02/A- xx	BIS M-143-02/A- xx	BIS M-144-02/A- xx
passende Datenträger Appropriate data carriers				
Abstand Datenträger zu Metall in mm (a) Data carrier distance to metal in mm	>0	>0	>0	>0
Freizone Datenträger in mm (b) Data carrier clear zone in mm	>100	>100	>100	>100
Schreibabstand in mm Write distance in mm	0-46	0-46	0-23	0-46
Leseabstand in mm Read distance in mm	0-46	0-46	0-23	0-46
Versatz in mm bei Abstand von	0 ±33 5 ±33 10 ±33 12 ±33 16 ±33 20 ±30 23 ±30 25 ±30 30 ±30 35 ±24 40 ±24 46 ±8 50 55 60 65 70 80 90	0 ±33 5 ±33 10 ±33 12 ±33 16 ±33 20 ±30 23 ±30 25 ±30 30 ±30 35 ±24 40 ±24 46 ±8 50 55 60 65 70 80 90	0-23 ±25 ±25 ±20 ±20 ±20 ±10	±33 ±33 ±33 ±33 ±33 ±30 ±30 ±30 ±24 ±24 ±8
Offset in mm at distance				

