

RMC-1000



RMC-1000

Industrial rack-mount Ethernet to fiber media converter Chassis with 18 slots

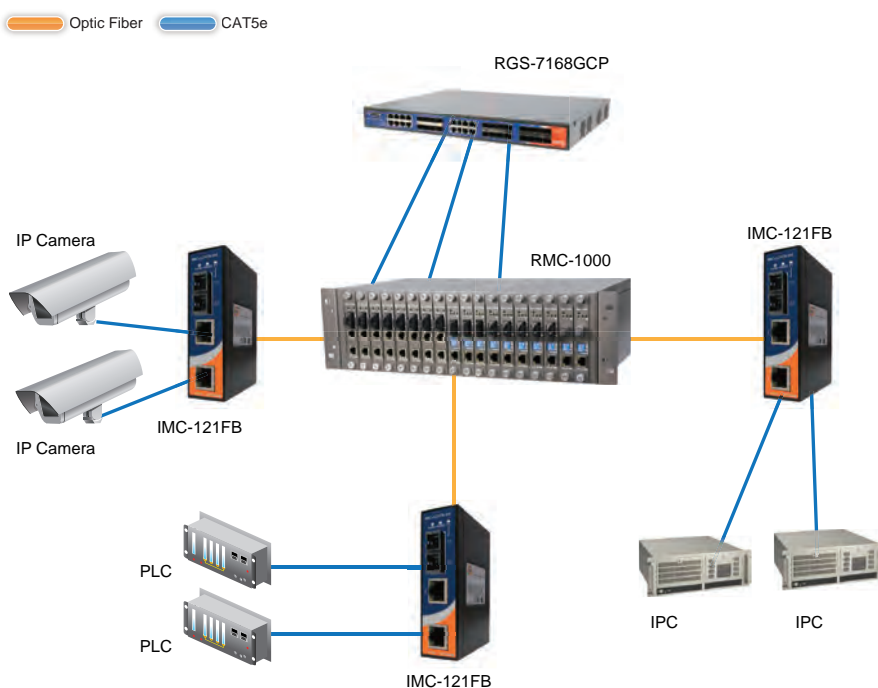
Features

- Supports 18 slots for media converter
- Each slot supports RMC-111PB/111FB/121FB series with 10/100Base-T(X) auto-negotiation and auto-MDI/MDI-X
- Supports single-mode or multi-mode for 100Base-FX interface
- Dual-power supply design for power redundancy
- Hot-swappable for Media Converters and power supplies
- High reliability and easy installation
- 19 inches Rack-mount enabled



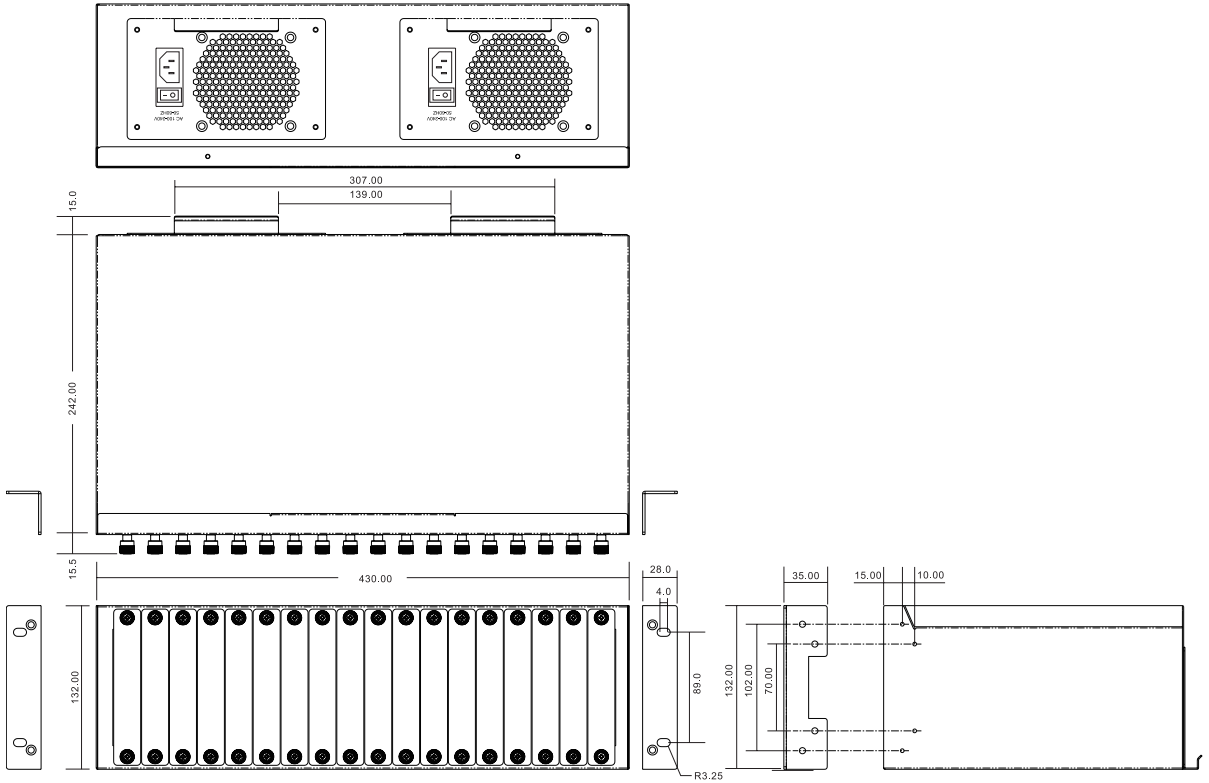
Introduction

RMC-1000 is the rack-mounted chassis box for RMC-111/121FB series media converter. RMC-1000 with 18 slots for Ethernet to optical fiber media converters which provide media conversion between 10/100Base-T(X) and 100Base-FX. Its dual power supply design can avoid interruption caused by power failure. In addition, media converter is also hot-swappable for each slot and can be installed easily. Therefore, RMC-1000 is reliable rack-mount chassis for media converter for high-density of media conversion application.



Connections of Media Converter

Dimensions



Specifications

ORing Chassis Media Converter Model	RMC-1000
Physical Ports	
Slot number	18
Power	
Input power	Two optional 100~240VAC power inputs
Overload current protection	Present
Physical Characteristics	
Dimension (W x D x H)	430 (W) x 243 (D) x 132 (H) mm (16.93 x 9.57 x 5.2 inch)
Weight (g)	4955 g
Environmental	
Storage Temperature	-40 to 85°C (-40 to 185°F)
Operating Temperature	-10 to 60°C (14 to 140°F)
Operating Humidity	5% to 95% Non-condensing

Regulatory Approvals

EMI	FCC Part 15, CISPR (EN55022) class A
EMS	EN61000-4-2 (ESD), EN61000-4-3 (RS), EN61000-4-4 (EFT), EN61000-4-5 (Surge), EN61000-4-6 (CS), EN61000-4-8, EN61000-4-11
Shock	IEC60068-2-27
Free Fall	IEC60068-2-32
Vibration	IEC60068-2-6
MTBF (Hours) (MIL-HDBK-217F2, GB, GC, 25°C)	870,520
Warranty	2 years

Ordering Information

Available Model	Model Name	Description
	RMC-1000	Industrial Rack-mount Ethernet to fiber media converter Chassis with 18 slots

Packing List

- RMC-1000
- Rack-mount Kit
- Quick Installation Guide

Optional Products (Can be purchased separately)

- RMC-111PB : Industrial Rack mount card type Ethernet to fiber media converter with 1x10/100Base-T(X) and 1x100Base-FX, SFP socket
- RMC-111FB-MM : Industrial Rack mount card type Ethernet to fiber media converter with 12x10/100Base-T(X) and 1x100Base-FX, multi-mode, 2Km/1310nm, SC connector
- RMC-111FB-SS : Industrial Rack mount card type Ethernet to fiber media converter with 1x10/100Base-T(X) and 1x100Base-FX, single-mode, 30Km/1310nm, SC connector
- RMC-121FB-MM : Industrial Rack mount card type Ethernet to fiber media converter with 2x10/100Base-T(X) and 1x100Base-FX, multi-mode, 2Km/1310nm, SC connector
- RMC-121FB-SS : Industrial Rack mount card type Ethernet to fiber media converter with 2x10/100Base-T(X) and 1x100Base-FX, single-mode, 30Km/1310nm, SC connector
- RPM-130-AC-EU-R10 : 130W rack mount 12VDC/10.8A Power Supply Module with universal 100 to 240VAC input, EU power cord
- RPM-130-AC-US-R10 : 130W rack mount 12VDC/10.8A Power Supply Module with universal 100 to 240VAC input, US power cord
- FPC series : Fiber Patch cord