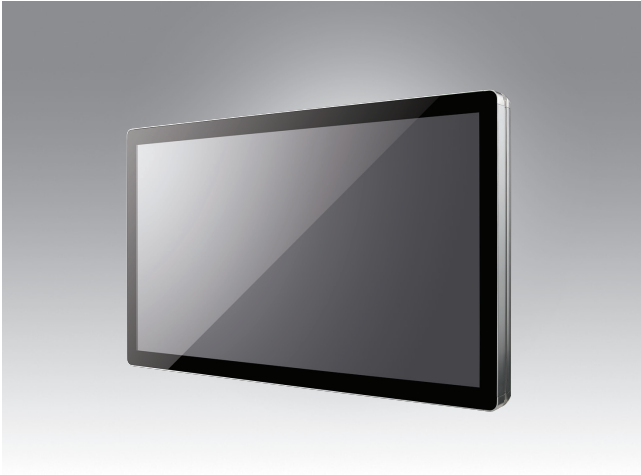


# UTC-515 (IP66/69K)

**15.6" Ubiquitous Touch Computer (IP66/69K)**  
**UTC-515IT-ATBOE with Intel® Core™ i5-1145G7E**  
**UTC-515JT-ATBOE with Intel® Celeron® J6412**



## Features

- 15.6" monitor with 16:9 widescreen display
- IP66/69K for full system
- Stainless chassis and Anti-corrosion enclosure
- M12 for all I/O ports
- Wide range system input rating, 11~32V
- Wide operating temperature range (-10 ~ 50 °C)
- Low power and fanless system design
- Supports both landscape and portrait screen orientations
- Full HD(1920x1080),brightness 1000nits LCD panel (optional)
- Waterproof Wifi Solution (optional)
- Build in camera / LED indicator / Light sensor (optional)



## Introduction

UTC-515 tough series features an all-in-one computing system equipped with wide format, touch based LCD panel. It is easy to integrate key peripherals and display systems for diversified self-service and interactive signage deploy in different application areas. The systems deliver updated information with well-designed interactive interfaces, fully ensure relevant content and targeted promotions are delivered. UTC series touch panel computers are the best investments to enhance user satisfaction, further brand equity, and maximize business profits.

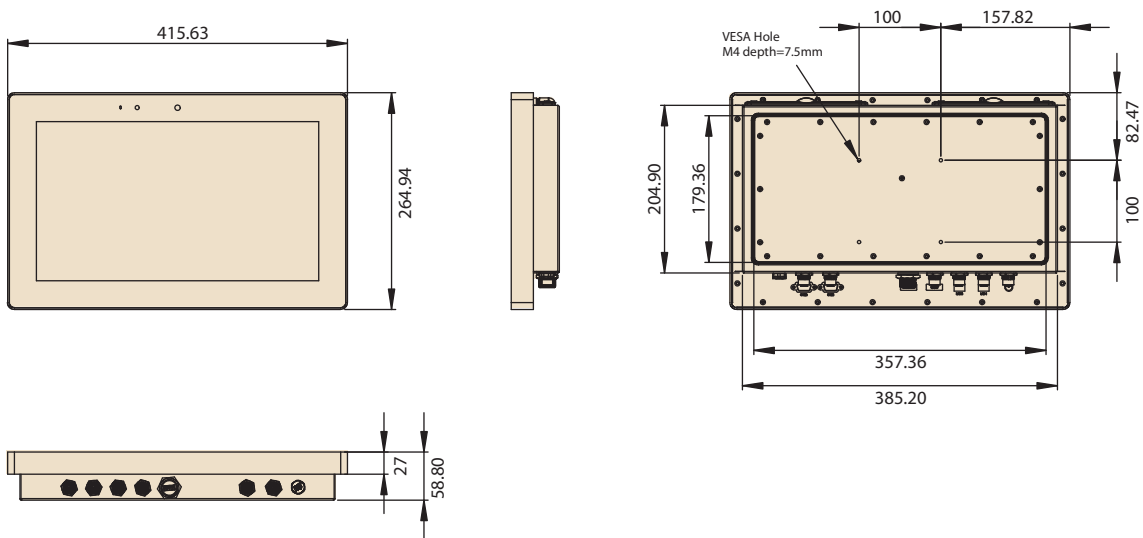
## Specifications

Model	UTC-515IT-ATBOE		UTC-515JT-ATBOE
Processor System	CPU	Intel® Core™ i5-1145G7E	Intel® Celeron® J6412
	Base Frequency	1.50/ 2.6 GHz/ Quad Core	2.0GHz/Quad core
	Cache	8 MB Intel® Smart Cache	1.5 MB L2 Cache
	Memory	2 x 260 pin SO-DIMM DDR4-3200 up to 64GB	1x 260 pin SO-DIMM DDR4-3200 up to 32GB
	HDD	1 x 2.5 internal SATA HDD bay	
	Network (LAN)	2 x Gigabit Ethernet ports (Supports Wake on LAN)	
	I/O ports	2 x RS-232 COM (RS-422/485)* 2 x USB 2.0/ 1 x USB 3.0 2 x Gigabit Ethernet (RJ-45) (M12 waterproof connector)	
	Bus expansion	1 x M.2 E-Key 2230(PCIe x1, USB2.0, I2C) 1 x M.2 B-Key 3042 (USB2.0) w/ Nano-SIM 1 x M.2 M-Key 2280 (PCIe x4 Gen.4 for PCIe SSD), optional SATA	1 x E-Key for wireless module (Type: 2230) optional B-Key for LTE module 1 x M-Key support SATA M.2 2242 module
	Speaker	2x3W	
	Mounting	VESA 100 x 100 mm	
Operating System	Dimensions (W x H x D)	415.63 x 264.94 x 58.8 mm	
	Weight	6kg	
Environmental Specifications	Operating System	Win 10 IoT Enterprise Win 11 IoT Enterprise Linux Ubuntu 22.04 Android 14	Win 10 IoT Enterprise Win 11 IoT Enterprise Linux Ubuntu 22.04 Android 14
	Operating Temperature	-10 ~ 50 °C	
	Relative Humidity	95% @ 40 °C/104 °F, non-condensing	
	Vibration	Operating Random Vibration Test 5 ~ 500Hz, 1Grms @with HDD; 2Grms @with SSD	
	Shock	Operating 10G peak acceleration (11ms duration), follow IEC 60068-2-27	
	EMC/ Safety	CE, FCC, UL, CB	
	System Protection	IP66/69K full system	
	System input rating	11V~32V	
Power Supply	Adapter	24V, 5A (120W ITE adapter)	
	Power consumption	Typical 35W Max. 70W	
LCD Display	Size/Type	15.6" TFT LCD with LED backlight	
	Max.Resolution	FHD 1920 x 1080	
	Max. Color	16.7M	
	Pixel Pitch (um)	179.25 x 179.25	
	Brightness (cd/m²)	500 nits(1000 nits optional)	
	View Angle	178°/178°	
	Camera	Optional	
Touch Screen Option	Light Sensor w LED Indicator	Optional	
	Type	Projected Capacitive. Glass Panel (7H Hardness)	
	Cover Glass Surface Treatment	Optional (AR / AG / Vandal Proof)	
	Light Transmission	88% ± 2%	
	Controller	USB Interface	

UTC-515 (IP66/69K)

Dimensions

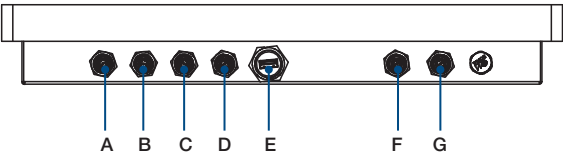
Unit: mm



Ordering Information

Part No.	Description
UTC-515IT-ATB0E	15.6" PCT.T/S with i5-1145G7E, 8GB RAM, 128G SSD, IP66/69K M12 connector AC 100-240Vac/DC output 24V, 5A adapter
UTC-515JT-ATB0E	15.6" PCT.T/S w/J6412, 8G RAM, 128G, IP66/69K M12 connector AC 100-240Vac/DC output 24V, 5A adapter
1702002605	Power cord 2P FRANCE 10A/16A 220V 1.83M 90D
1702002600	Power Cord 3P UL/CSA(USA) 125V 10A 1.83M 180D
1700000596	Power Cord (China) CCC,10A 250V, 3P 1.83M
1700018704	Power Cord UK BSI 2P 10A 250V 1.8M 18AWG
Y5A0520000	Cable M-DIN 4P(F)/waterproof 5P 1M
Y5A0520001	A cable RJ45-8P8C/waterproof 8P 1M
Y5A0520002	M cable waterproof /USB-A 4P*2 1M
Y5A0520003	M Cable USB-A 9P(F)/Waterproof USB 9P(M) 1M
Y5A0520004	M Cable 1*9 P D-SUB/waterproof 10P 1M

Fully- Integrated I/O (UTC-515 IP66/69K)



- A. Power Connector
- B. LAN 1
- C. LAN 2
- D. USB 2.0 x 2
- E. USB 3.0 x 1
- F. COM 1
- G. COM 2

# DeviceOn/iService

## Unified Remote Device Management Software



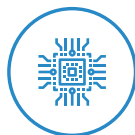
### Features

- Supports Advantech devices equipped with Windows, Android, and Linux OS
- Flexible device, location, user, and permissions management
- Enables remote monitoring and control of hardware, software, and peripherals
- Supports over-the-air (OTA) firmware and software updates
- Ensures quick, easy, and secure device onboarding
- RESTful APIs for third-party system integration

## Introduction

Advantech's DeviceOn/iService is a next-generation unified device management solution based on the WISE-DeviceOn platform. Designed to enable centralized monitoring and remote management, DeviceOn/iService supports Advantech devices equipped with Windows, Linux, or Android operating systems. The software also supports the management of applications and integrated peripherals, such as a barcode scanner, card reader, camera, and printer. Users can remotely access and control connected devices, take screenshots, rollout OTA upgrades, and use remote desktop capabilities for troubleshooting from any location at any time. Moreover, DeviceOn/iService supports batch operations to facilitate the management of multiple devices simultaneously for easy and convenient device configuration and deployment.

## Total Management



### Devices & Hardware

- Windows, Linux, Android
- Hardware, storage, battery



### Software & Peripherals

- Software monitoring & access
- Screens, USB devices, printers



### Open for Expansion

- Peripheral integration
- Open APIs for integration

## Remote Access



### Real-Time Monitoring

- Connection/hardware status
- Software/peripheral status
- Failure notifications



### Remote Controls

- Power controls
- Audio, backlight controls
- Software controls



### Troubleshooting

- Screenshots
- Remote desktop support

## Operational Efficiency



### OTA updates

- System/software updates
- File repository management
- App store



### Batch Controls

- 1-to-many batch reboot, etc.
- Time-saving tasks



### Setup Booster

- Software/peripheral watchlist
- Roles, rule templates

Note: Some functions may vary according to the product

## System Architecture

