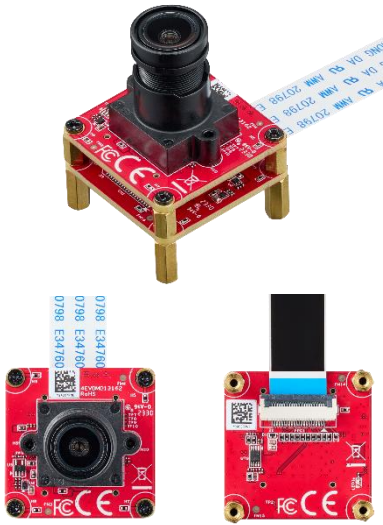


SENSING INTELLIGENCE CAMERA



EVDM-OOM1-RHCF

MIPI CSI-2 13MP Fixed Focus Camera Module

HIGHLIGHT FEATURES

- MIPI CSI-2 Interface, 13MP @20fps (Max. Resolution)
- Support Pixel Binning, HDR, ISP Inside
- Dynamic Range : 69dB
- Lens FOV (D / H / V) : 91° / 71° / 52°
- Platform Support : NVIDIA Jetson Orin, Intel
- Complies with CE / FCC Class A

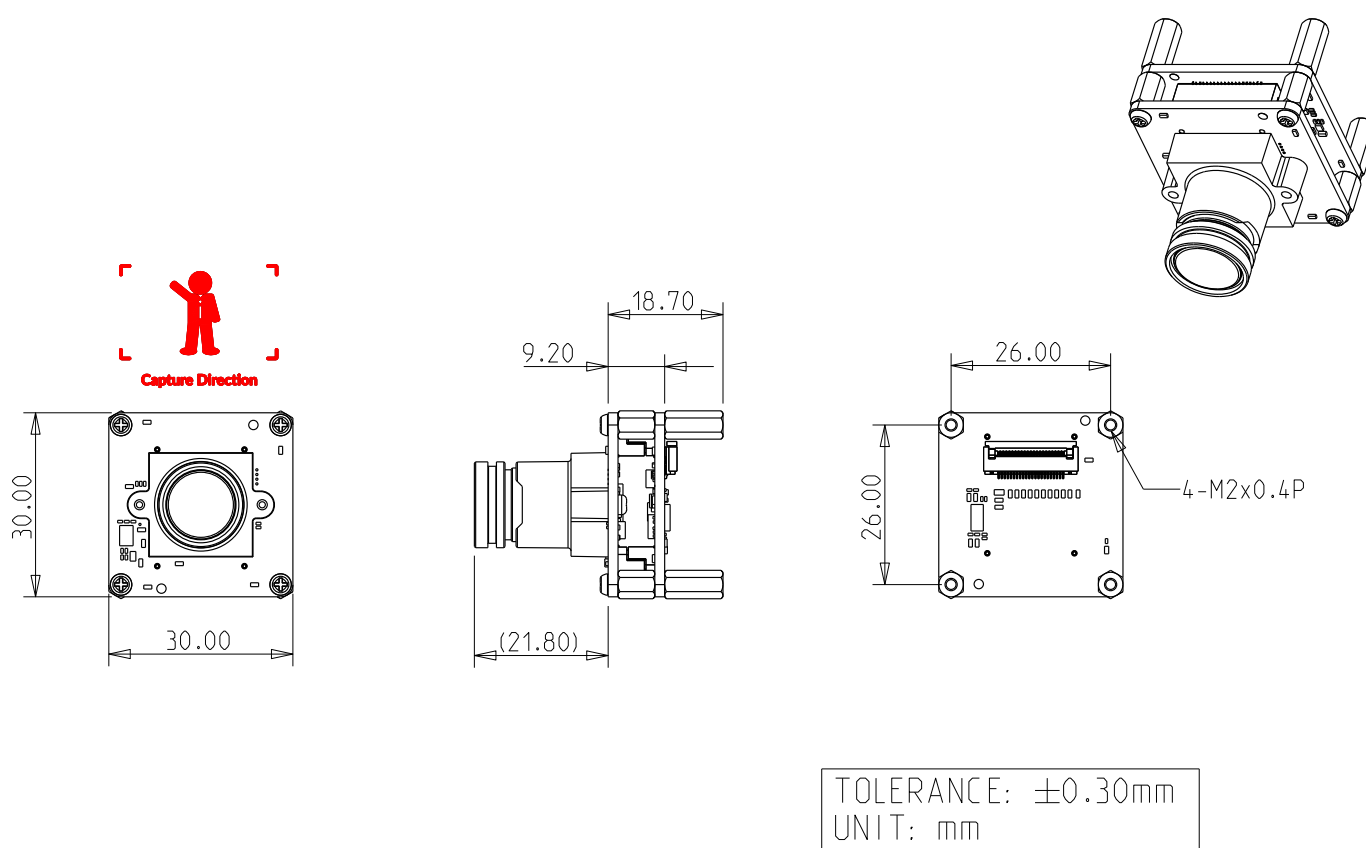
SPECIFICATIONS

Model Name	EVDM-OOM1-RHCF
Module Type	MIPI CSI-2 13MP Fixed Focus Camera Module
Resolution (Max.)	13MP
Frame Rate (Max. Resolution)	20fps
Output I/F	MIPI CSI-2
Sensor	onsemi AR1335
Shutter	Rolling
Video Format	YUV422
Power Consumption	Approximate 1W (YUV422 @Max. Resolution)
Operating Temperature	-30°C ~ 70°C
Sensor Size	1/3.2"
Pixel Size	1.1µm
Chroma Type	Color
Lens Type	Fixed Focus (M12)
Dimension (W x L x H/mm)	30 x 30 x 45 39 x 39 x 45 (Open Front Housing)
Lens FOV (D / H / V)	91° / 71° / 52°
Platform Support	NVIDIA Jetson Orin, Intel
Housing	Board Level, Open Front Housing
Features	HDR
Warranty	3 Years
Note	For detailed resolution and frame rate combined application, please refer to product datasheet. For more platform support, please contact our local sales.

ORDER INFO.

P/N	Description
EVDM-OOM1-RHCF-11	MIPI CSI-2 13MP Fixed Focus Camera Module (MIPI CSI-2 FFC cable included)
EVDM-OOM1-RHCF-21	MIPI CSI-2 13MP Fixed Focus Camera Module, Open Front Housing (MIPI CSI-2 FFC cable included)
7W7000000060	FFC cable 15 cm, 22 pins, pitch 0.5mm

MECHANICAL DRAWING

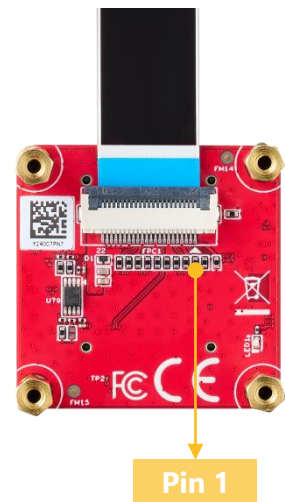


RESOLUTION MATRIX

Resolution	YUV422	MJPEG
4192 x 3120	20fps	N/A
4096 x 3120	20fps	N/A
3840 x 2160	30 / 25fps	N/A
2592 x 1944	30 / 25fps	N/A
2560 x 1440	30 / 25fps	N/A
1920 x 1080	60 / 50 / 30 / 25fps	N/A
1280 x 720	100 / 90 / 60 / 50 / 30 / 25fps	N/A
640 x 480	120 / 100 / 90 / 60 / 50 / 30 / 25fps	N/A

CONNECTOR PIN ASSIGNMENT

Pin #	Pin Name	Description
1	GND	Ground
2	CAM_D0_N	CSI Data 0
3	CAM_D0_P	CSI Data 0
4	GND	Ground
5	CAM_D1_N	CSI Data 1
6	CAM_D1_P	CSI Data 1
7	GND	Ground
8	CAM_CK_N	CSI Clock
9	CAM_CK_P	CSI Clock
10	GND	Ground
11	CAM_D2_N	CSI Data 2
12	CAM_D2_P	CSI Data 2
13	GND	Ground
14	CAM_D3_N	CSI Data 3
15	CAM_D3_P	CSI Data 3
16	GND	Ground
17	CAM_PWDN	Camera Power-down
18	CAM_MCLK	Camera Master Clock
19	GND	Ground
20	CAM_SCL	I2C Clock (3.3V)
21	CAM_SDA	I2C Data (3.3V)
22	CAM_3V3	+3.3V

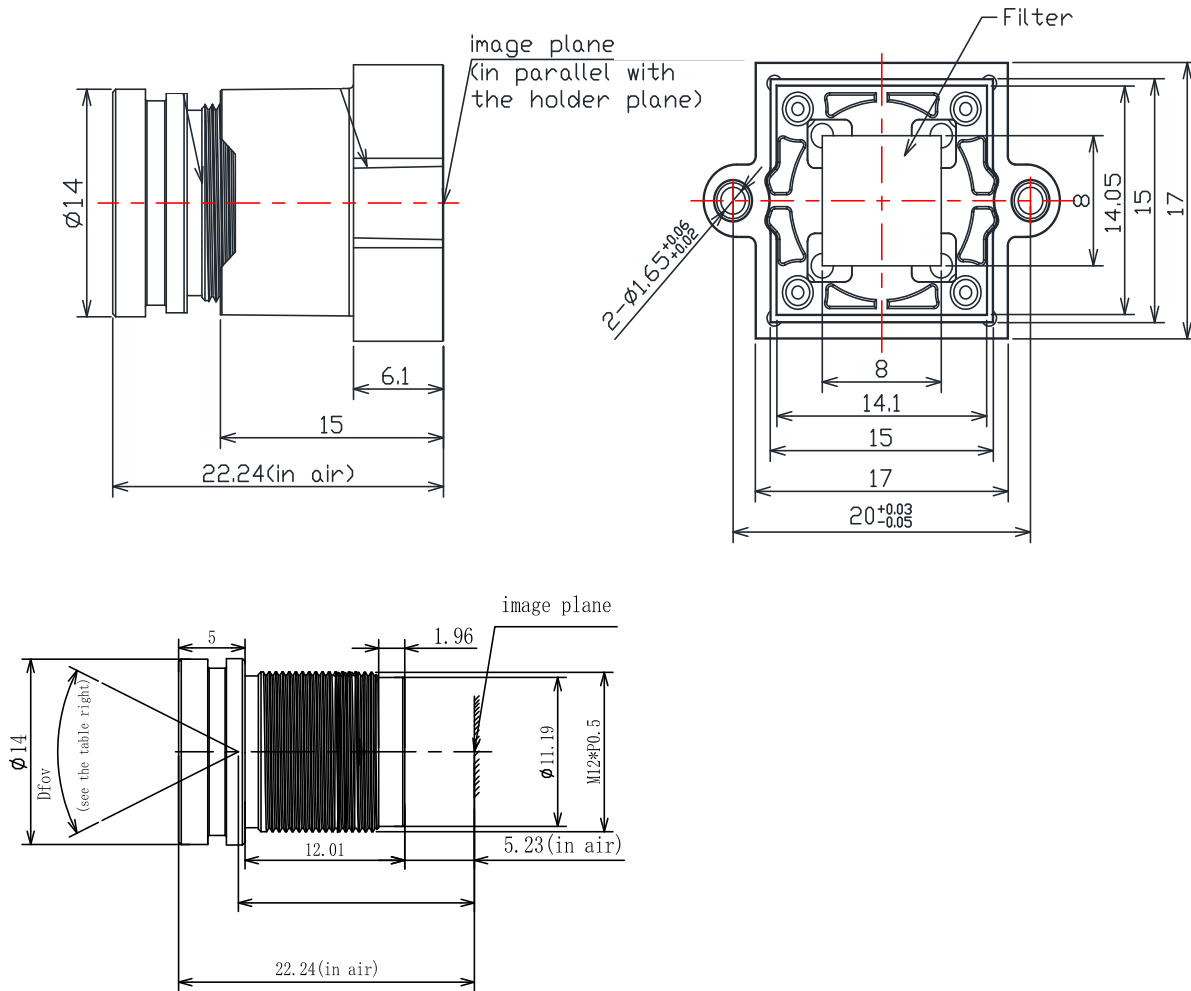


PLATFORM SUPPORT

Platform	Processor
NVIDIA Jetson	Jetson AGX Orin Jetson Orin NX Jetson Orin Nano
Intel	Alder Lake 12 th Raptor Lake 13 th Core™ Ultra processor

For more information please contact our local sales.

LENS SPEC.



Items	Specification
F No.	2.0
Focal Length	4mm
Lens Structure	1G4P
Mount	M12 x P0.5 (S-Mount)

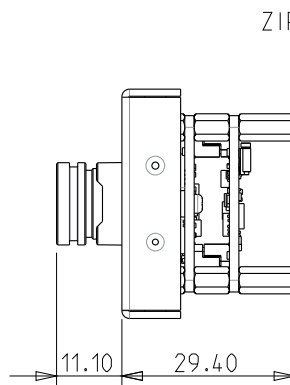
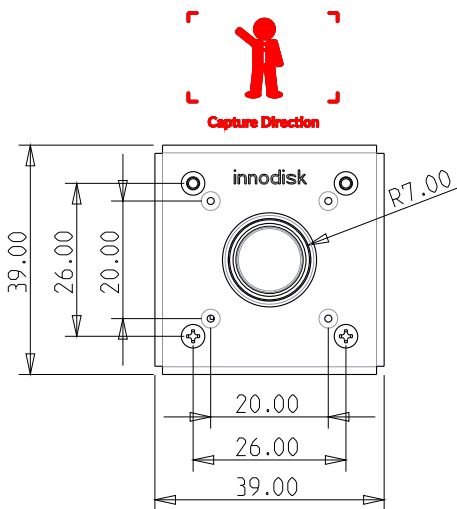
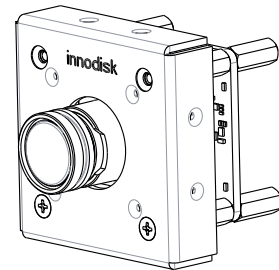
CABLE APPEARANCE



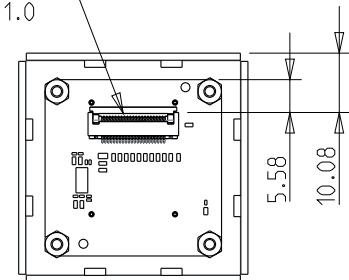
PRODUCT APPEARANCE (OPEN FRONT HOUSING)



MECHANICAL DRAWING (OPEN FRONT HOUSING)



ZIP FPC/FCC CONN.
15Pin Pitch:1.0



TOLERANCE: $\pm 0.30\text{mm}$
UNIT: mm