



Digital Signage is widely deployed in a range of fields such as retail, education and hospitality, and has become an important part of the marketing landscape. Intelli-signage solutions combine highly reliable 42" touch screen KIOSK bundled with signage software and data analytics.



Heatmap Analysis



Data Analytics



Touch Screen



Age & Gender



Live Tag

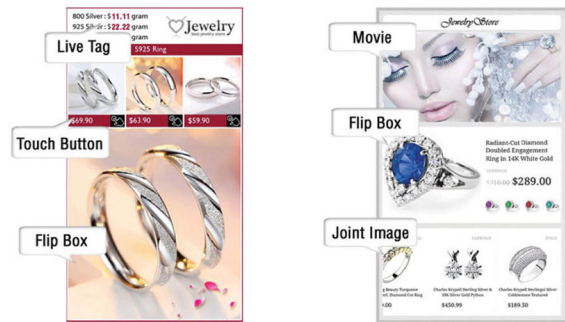


Spin the Wheel



Signage Software Specification

- Client/ Server architecture
- Central content management
- Drag-and-drop content design
- Supports touch content
- Supports versatile files



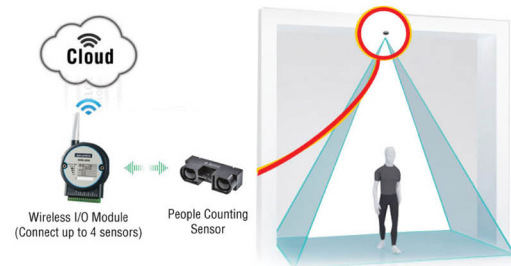
Age & Gender Recognition

Intelli-Signage capture and analyze shoppers profiles through a digital camera. Shoppers' profiles are determined via face detection, gender and age group determination algorithm.



Heatmap Analysis (People Counting)

Measure the total number of visitors at different areas simultaneously by digital analysis of multiple people counting sensors.



Remote Management

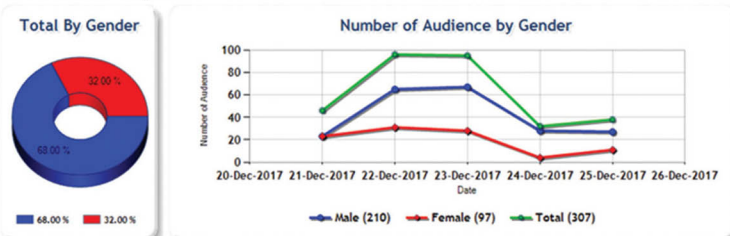
Remote management simplifies signage manageability by allowing companies to upload content remotely.

Data Analytics

Intelli-Signage connects seamlessly to the cloud, data are available on-demand in real-time. Every single interaction produces intelligence data that can be used to help create personalized customer experience.



• Gender report



• Touch report

