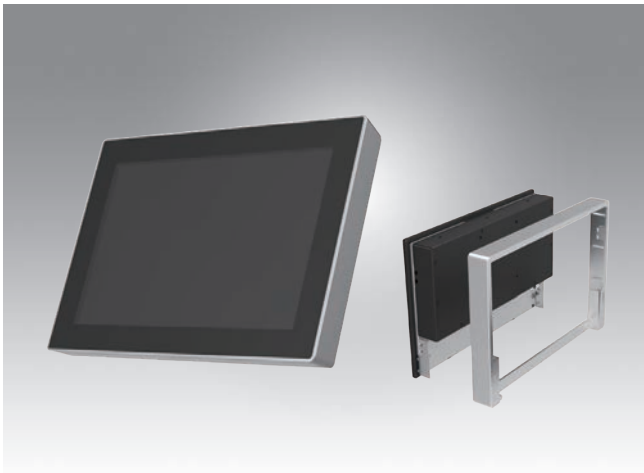


# UTC-510 (PoE)

## 10.1" Ubiquitous Touch Computer UTC-510D with Intel® Celeron® N2807 / J1900



### Features

- Low Power & Fanless design
- Built-in Intel® Celeron® N2807 / J1900 (UTC-510D)
- Providing Natural Viewing Experience with 16:10 10.1" Display
- Front panel complies with IP65 protection standard
- Landscape & Portrait screen mode support by different applications
- VESA 75 mm standard mounting holes for varied mounting demands
- Detachable plastic frame design for panel mount applications
- POE supported on Celeron N2807/J1900 platform



### Introduction

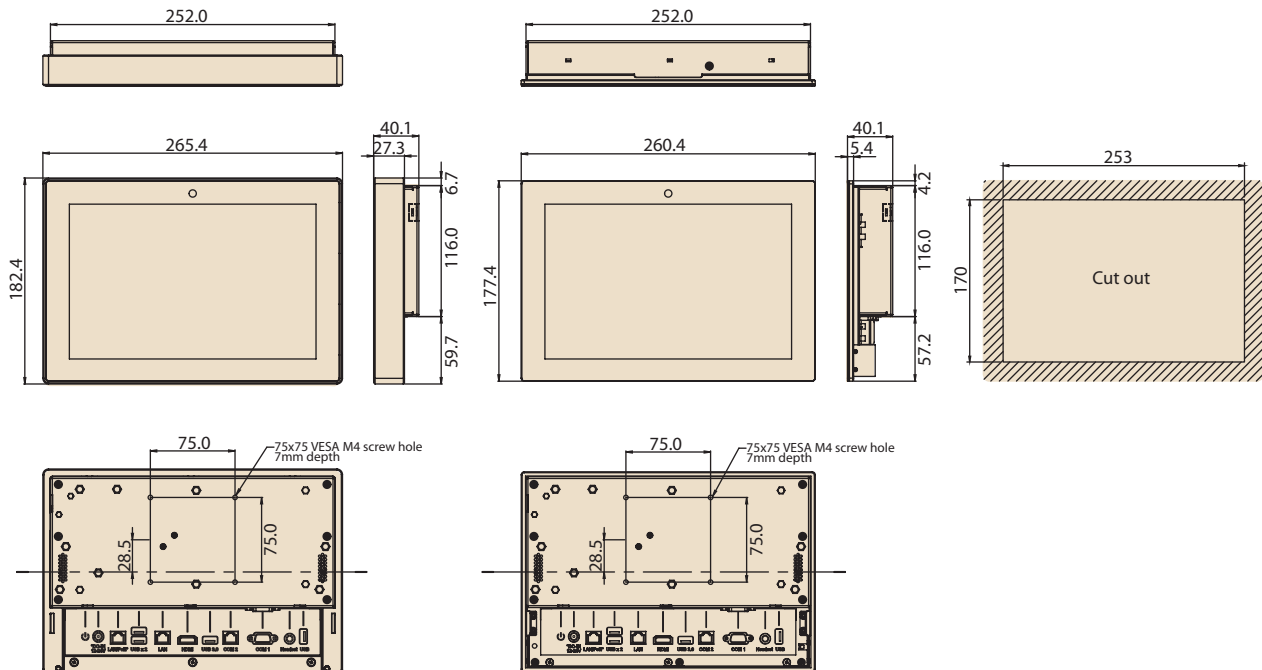
UTC-510 features an all-in-one computing system equipped with wide format, touch based LCD panel. It is easy to integrate key peripherals and display systems for diversified self-service and interactive signage deploy in different application areas. The systems deliver updated information with well-designed interactive interfaces, fully ensure relevant content and targeted promotions are delivered. UTC series touch panel computers are the best investments to enhance user satisfaction, further brand equity, and maximize business profits.

### Specifications

Processor System	CPU	Intel® Celeron® N2807 (UTC-510D)	Intel® Celeron® J1900 (UTC-510D)	
	Base Frequency	1.58 GHz (Dual-Core)	2 GHz (Quad-Core)	
	Cache	L2 Cache 1MB	L2 Cache 2MB	
	Memory	1 x 204 pin SO-DIMM DDR3L 1333 MHz up to 8 GB	1 x 204 pin SO-DIMM DDR3L 1333 MHz up to 8 GB	
	HDD	1 x 2.5 internal SATA HDD bay		
	Network (LAN)	2 x Gigabit Ethernet ports (Supports Wake on LAN)		
	I/O ports		2 x RS-232 COM (COM2 RS-422/485 supported)*	
			3 x USB 2.0 / 1 x USB 3.0 / 1 x USB 2.0 (optional)	
	Stereo Speaker	2 W x 2		
	Bus expansion	1 Full size MiniPCIe/mSATA 1 Half size MiniPCIe		
Mounting	VESA 75 x 75 mm			
Dimensions (W x H x D)	265.40 x 182.40 x 39.55 mm			
Weight	1.80 kg (3.97 lbs)			
OS Support	WES7P 64bit Windows Pro Embedded 7 64bit Windows POSReady7 32bit Win 10 IoT Enterprise 64bit Linux Ubuntu 14.04 Android 4.4			
Environmental Specifications	Operating Temperature	0 ~ 45° C (32 ~ 113° F)	0 ~ 40° C (32 ~ 104° F)	
	Relative Humidity	10 ~ 95% @ 40° C non-condensing		
	Vibration	1G*		
	Shock	5G peak acceleration (11 msec. duration)		
	Certification	CE, FCC, CB, UL, CCC, BSMI		
Front Panel Protection	IP 65 Compliant			
Power Supply	POE	IEEE 802.3at/30W		
	DC Input Rating	Optional (12 V/3 A ~ 24 V/1.5 A, 36W ITE Adapter)		
	Power consumption	Typical 10W Max. 20W		
LCD Display	Size/Type	10.1" TFT LCD with LED backlight		
	Max. Resolution	1280 x 800		
	Max. Color	16.7M		
	Pixel Pitch (um)	169.5 x 169.5		
	Brightness (cd/m <sup>2</sup> )	350		
	View Angle	170 / 170		
Camera	5 Mega Pixel (Optional)			
Touch Screen Option (PE/GE)	Type	Projected Capacitive. Glass Panel		
	Light Transmission	80% ± 5% / 90%		
	Controller	USB Interface / -		

## Dimensions

Unit: mm



## Ordering Information

Part No.	Description
UTC-510DP-APB0E	10.1" Intel Celeron N2807 Based fanless UTC with PCT.T/S 2GB RAM, PoE
UTC-510DP-APB1E	10.1" Intel Celeron J1900 Based fanless UTC with PCT.T/S 2GB RAM, PoE
1700001524	Power Cord 3P UL 10A 125V 180cm
170203180A	Power Cord 3P UK 2.5A/3A 250V 1.83M
170203183C	POWER Cord 3P Europe (WS-010+WS-083)183cm
1700021374-01	Power Cord 3P CCC 2.5A 250V 250cm (IEC60320-C5)
1960073820N001	IO Cover UTC-510
1931031500	Screws for IO Cover UTC-510(*2)

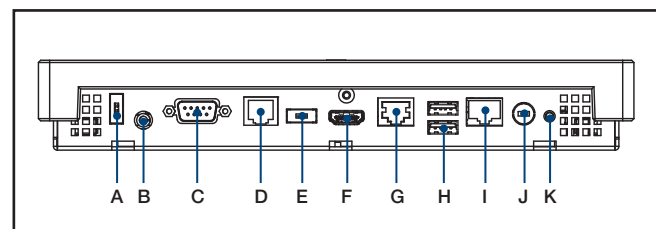
## Peripherals for UTC-510 series

Part No.	Description
UTC-510P-B03E	2D Barcode Scanner - Honeywell N3680 For UTC-510 (USB connection)
UTC-510P-F01E	Finger Print Reader For UTC-510 (USB connection)
UTC-510P-R01E	RFID Reader For UTC-510 (USB connection)
UTC-510P-M01E	Magnet Strip Reader For UTC-510 (USB connection)
UTC-510P-S01E	Smart Card Reader For UTC-510 (USB connection)

## Installation Accessory

Part No.	Description
UTC-WALL-MOUNT1E	Wall Mount kit for UTC-520/515/510
UTC-WALL-MOUNT4E	UTC-510 VESA mount (75 x 75)
UTC-S03-STANDE	UTC 75*75 mm Desktop Stand
UTC-510-STAND0E	UTC-510 desktop stand
1960086099N000	UTC-510 (PoE) Panel Mount Clamper (*4)
1930005598	UTC-510 Panel Mount Screw (*4)

## Fully- Integrated I/O



- A. USB 2.0\* (DC version only)
- B. Headset
- C. COM1
- D. COM2
- E. USB 3.0\* (DC version only)
- F. HDMI
- G. LAN Ports
- H. USB 2.0 x 2
- I. LAN/PoE Ports
- J. DC Power jack (DC version only)
- K. Power switch

\* UTC-510 (PoE) – A PoE Powered Device (PD) is a device powered by a PSE and thus consumes energy.

Please do take a Power sourcing equipment (PSE) which follows IEEE 802.3at PoE standard, also known as PoE+ or PoE plus, provides up to 30W of DC power output. Only 25.5 W input is assured to be available at the powered device as some power dissipates in the cable.

For Standard UTC-510 PoE Version, 1 x USB 2.0 (A port) and 1 x USB 3.0 (E port) are not suggested to use.

The customer can change the configuration only when total power input is under 25.5 W.

## WiFi ordering information for UTC-510(PoE) series

Part No.	Description
UTC-510PW-A0E	UTC-51(PoE) WIFI KIT, DNXA-116, 2Tx/2Rx, Antennas
UTC-510PW-A1E	UTC-510(PoE) WIFI KIT, DNXA-92, 2Tx/2Rx, BT 4.0 Antennas
UTC-510PW-A2E	UTC-510(PoE) WIFI KIT, DNXA-222, BT, 2Tx/2Rx, BT 4.2, Antennas