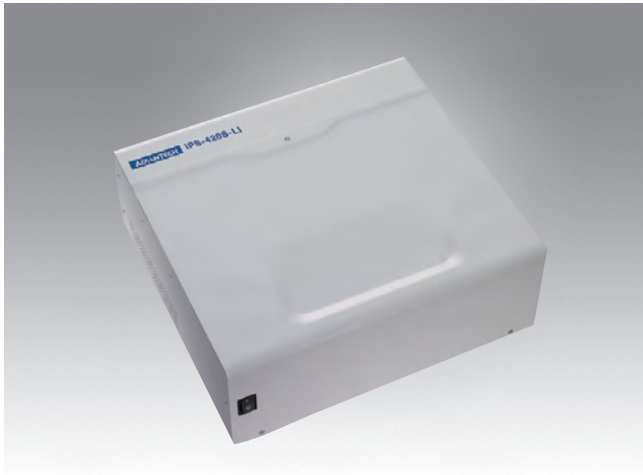


IPS-M420S

420 Wh Intelligent Power Storage System



Features

- Contains environmentally-friendly, long lifecycle rechargeable batteries
- 170W DC output for integration of various devices
- Fanless design for hospital environment
- Battery pack design for quick and easy maintenance
- 2 ports DC output with simultaneous power support
- Safety protection prevents against over charge and discharge
- "AMiS_Link" software solution for remote battery management



Specifications

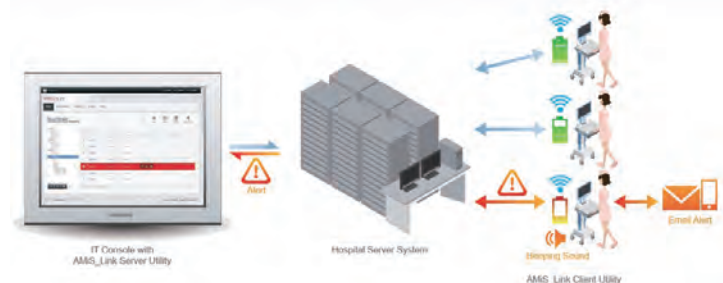
Power Supply	Battery Type	Lithium-ion
	Model Capacity	420 Wh (The maximum energy capacity will depends on the type of battery pack)
	Battery Lifespan	Capacity 80%, 2000 counts or 2 years (Depends on whichever occurs first)
	Charge Time	≤ 3hr.400Wh
	Input Voltage	100 ~ 240 V _{AC} , 50 ~ 60 Hz, Max 4.0A
	DC Output Voltage	System 1: 19 V _{DC} , Max. 6 A System 2: 12 V _{DC} , Max. 5 A
I/O Ports	Charging Status Indicators	LEDs with continuous readout; intelligent software
	DC Output Interface	DC jack (4-pin locking mini-din connector)
	Communication Interface	RS-232
Environment	Vibration	5 ~ 500 Hz 1 G
	Operating Temperature	30° C
	Cooling System	Fanless
	Water Resistance	IP67 DC output connector
Physical Characteristics	Dimensions	282 x 260 x 101 mm (11.1" x 10.2" x 3.9")
	Weight	8 kg
Certifications	IEC 60601-1 Compliance, CE, FCC Class B Certified, CCC	

Power Management Software

AMiS_Link	Capabilities	<ul style="list-style-type: none"> Battery capacity indicator Alerts (battery capacity, temperature, warning) Battery life cycle statistics Report & log file Client installation & server installation (Optional) Multi-language support, including Traditional Chinese, Simplified Chinese, English, German and Dutch
-----------	--------------	---------------------------------------------------------------------------------------------------------------------------------------------------------------------------------------------------------------------------------------------------------------------------------------------------------------------------------------------------------------------------------------------

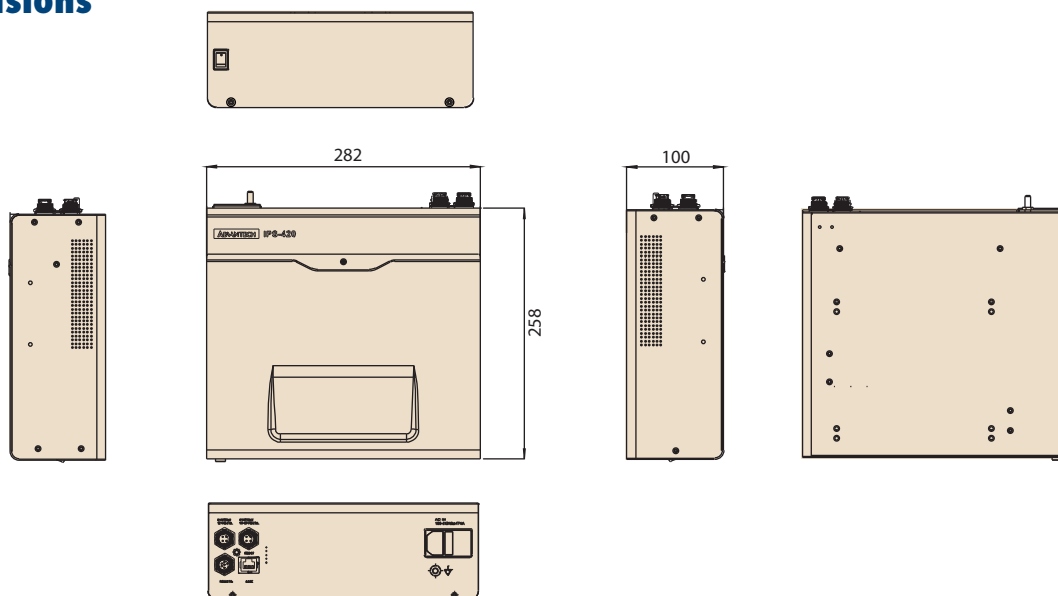


AMiS_Link Software Solution for Remote Battery Management



Dimensions

Unit: mm



Ordering Information

Part Number	Cell Type	System Capacity	Lifecycle	Charge time	Weight	Remarks
iPS-M420-LID-SE	Li-ion	420 Wh	Capacity 80%, 2000cycles or 2 years	≤ 3hr.400Wh	8.5 kg	
iPS-M420A-LID-SE	Li-ion	420 Wh	Capacity 80%, 2000cycles or 2 years	≤ 3hr.400Wh	8.5 kg	For AMiS cart only

Accessories

Part Number	Power Cord Type (Spiral)
1702002600	Power Cable (USA) 1.8 M
1702002605	Power Cable (Europe) 1.8 M
1700018704	Power Cord (UK) 1.8 M

Packing List (iPS-M420-LID-SE)

Part Number	Part Description	Quantity
1700020364-01	4-pin to Ring Terminal cable (150 cm)	1
1700020371-01	4-pin to DC Jack cable (180 cm)	1
IPS-REMT-00-A0E	6-pin remote control cable	1
1700019500	RJ-45 to RS-232 console cable (180 cm)	1
2190000902	2-year warranty card	1

Rear I/O



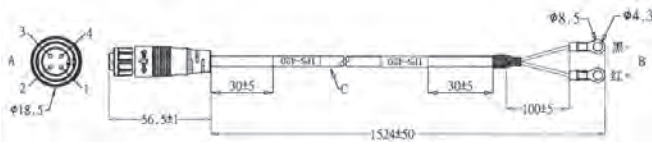
- System 2: 12 V_{DC}, 5 A
- System 1: 19 V_{DC}, 6 A
- 6-pin remote control connector
- RJ-45 (to RS-232) connector
- AC In and AC On/Off switch
100 ~ 240 V_{AC} / F4A
- AC input switch
- Ground pole

Accessories



Part Number	989K871080E	9898871081E	IPS-REMT-00-A0E	DC/DC Parts Lists																																
Description	DC to DC Converter	DC to DC Converter	Battery Remote Control																																	
Remarks	<ul style="list-style-type: none"> Connector type: 4-pin Input: 12 ~ 19 V, 8 ~ 3 A Output: <ul style="list-style-type: none"> Mode 1: 12 V, 6 A Mode 2: 15 V, 5 A Mode 3: 16 V, 5 A Mode 4: 19 V, 4 A 	<ul style="list-style-type: none"> Connector Type: 4-pin Input: 12 ~ 24 V, 8 ~ 3 A Output: <ul style="list-style-type: none"> Mode 1: 12 V, 6 A Mode 2: 16 V, 5 A Mode 3: 20 V, 4 A Mode 4: 24 V, 4 A 	<ul style="list-style-type: none"> 10 level LED indicator to display battery status Waterproof cable with 180cm 	<table border="0"> <tr> <td>1</td> <td>989K871080E</td> <td>x1</td> <td>ASS'Y PCM-8710 DC19V (80E)</td> </tr> <tr> <td>2</td> <td>9898871081E</td> <td>x1</td> <td>ASS'Y PCM-8710 DC24V (81E)</td> </tr> <tr> <td>3</td> <td>1960053113N001</td> <td>x1</td> <td>BKT-Bottom Cover DC to DC</td> </tr> <tr> <td>4</td> <td>19330304A0</td> <td>x4</td> <td>PCBA Screw M3*4L RF/S</td> </tr> <tr> <td>5</td> <td>1960053114N001</td> <td>x1</td> <td>BKT-Top Cover DC to DC</td> </tr> <tr> <td>6</td> <td>2000018920-01</td> <td>x1</td> <td>LABEL DIP Switch Mapping 80E</td> </tr> <tr> <td>7</td> <td>2000022226-01</td> <td>x1</td> <td>LABEL DIP Switch Mapping 81E</td> </tr> <tr> <td>8</td> <td>1930001361</td> <td>x4</td> <td>Cover Screw M3x4L</td> </tr> </table>	1	989K871080E	x1	ASS'Y PCM-8710 DC19V (80E)	2	9898871081E	x1	ASS'Y PCM-8710 DC24V (81E)	3	1960053113N001	x1	BKT-Bottom Cover DC to DC	4	19330304A0	x4	PCBA Screw M3*4L RF/S	5	1960053114N001	x1	BKT-Top Cover DC to DC	6	2000018920-01	x1	LABEL DIP Switch Mapping 80E	7	2000022226-01	x1	LABEL DIP Switch Mapping 81E	8	1930001361	x4	Cover Screw M3x4L
1	989K871080E	x1	ASS'Y PCM-8710 DC19V (80E)																																	
2	9898871081E	x1	ASS'Y PCM-8710 DC24V (81E)																																	
3	1960053113N001	x1	BKT-Bottom Cover DC to DC																																	
4	19330304A0	x4	PCBA Screw M3*4L RF/S																																	
5	1960053114N001	x1	BKT-Top Cover DC to DC																																	
6	2000018920-01	x1	LABEL DIP Switch Mapping 80E																																	
7	2000022226-01	x1	LABEL DIP Switch Mapping 81E																																	
8	1930001361	x4	Cover Screw M3x4L																																	

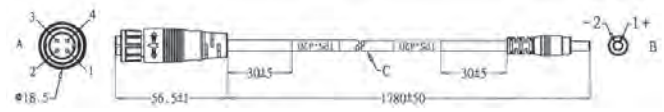
Cable Information



Unit: mm

1700019666

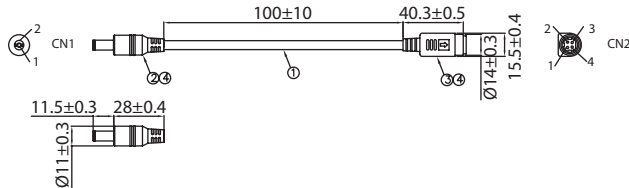
4-pin to Ring Terminal cable (152 cm)



Unit: mm

1700030760-01

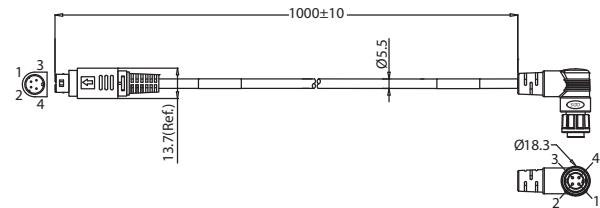
4-pin to DC Jack cable (178 cm)



Unit: mm

1700027393-01

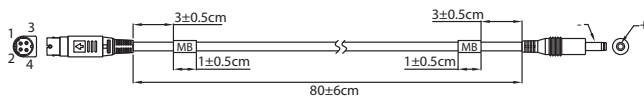
M Cable M-DIN 4P(F)/DC Jack (10 cm)



Unit: mm

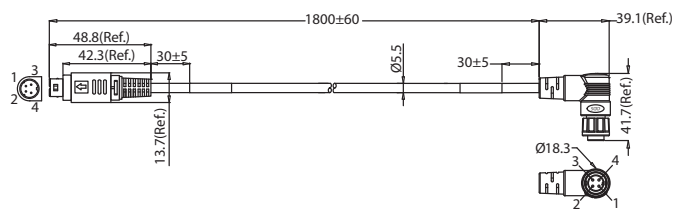
1700019486-11

4-pin to 4-pin DC Medical (180 cm)



1700018916

4-pin to DC Jack (80 cm)



Unit: mm

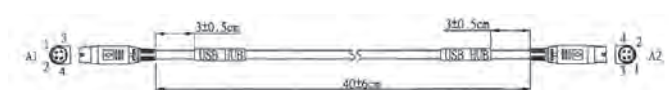
1700019486-11

4-pin to 4-pin DC Medical (180 cm)



1700032295-01

4-pin to 4-pin (80 cm)



1700018921-11

4-pin to 4-pin (40 cm)