



Video wall has become more and more popular due to the immense impact on viewers. Eye-catching video wall can attract audiences and have a huge impact on consumers purchasing decisions. A powerful media player is needed to drive content for a screen matrix of displays. Content design software enable multiple content to be display on individual screens or span the entire video wall.

### Super Narrow Bezel

Virtually seamless appearance with a bezel of just 1.8mm screen to screen

### IPS Panel Technology

Superior image quality and colour depth at 178° ultra wide viewing angle

### Flexible Configuration

Support any configuration, for example 2x2, 3x3, 6x4 etc.

### LED Backlight

Automatically backlight and brightness adjust, intelligent screen protection, anti-burn

### Automatic Tiling

With an integrated video matrix processor, no additional hardware is required to tile to any configuration

### Content Design Software

Split screen control by @Signager content design software



**Super Narrow Bezel**



**Flexible Configuration**



**IPS Panel Technology**



**Automatic Tiling**



**LED Backlight**

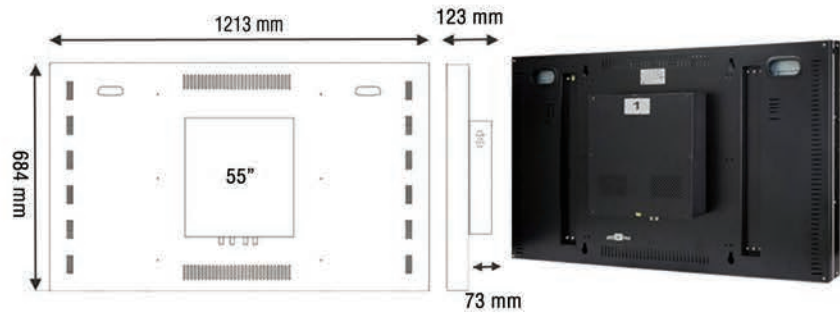


**Content Design Software**



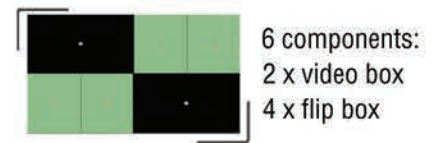
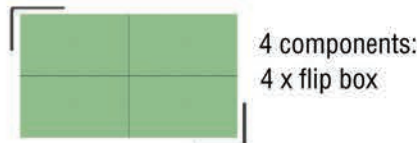
## LCD Specification

- Panel Size: 46" / 49" / 55" (16:9)
- Brightness : 500cd/m<sup>2</sup>
- Contrast : 1400:1
- Respective Rate: 1920 x1080
- Gap between panels: 3.5 mm
- Backlight: LED
- Power: 300W
- Color: 16.7M
- Viewing Angle: V:178°, H:178°



## Software Specification (@Signager)

Design software allows a user to determine a different type of display: 2x2, 3x3, 4x2, etc. The software supports multiple contents (image, video, etc). Split screen is controlled by @Signager content design software.



## System Architecture



## Shelf-Edge Display Strips



- Visually attract passersby
- Dynamic media for enhanced customer experience
- Influence customers decision directly at point-of-purchase
- Flexible configuration: 3 x 4.3", 5 x 4.3", 6 x 4.3", 9 x 4.3", 11 x 4.3"
- Real-time content update





Intelli-Signage not only delivers dynamic and immersive multimedia content, but also increases customer engagement by displaying content specifically targeted to the customer. Intelli-Signage adds interactivity to a digital signage network, opening up a whole new world of possibilities for both retailer and consumer.



**Data Analytics**



**Queue Number**



**Touch Screen**



**Age & Gender**



**Live Tag**



**Spin the Wheel**

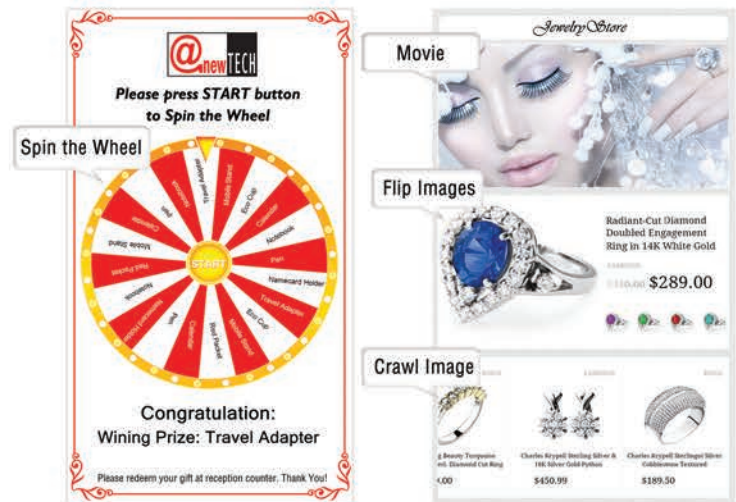


## Signage KIOSK Specification

- Size: 42" / 55"
- CPU: Intel Core i5
- Memory: 4GB, DDR3
- Storage: 500GB HDD

## Signage Software Specification

- Client/ Server architecture
- Central content management
- Drag-and-drop content design
- Supports touch content
- Supports versatile files:
  - Video, Image, Text / Image Crawl, Digital clock, Flash, Spin the Wheel, Live Tag, Queue Number



## Age & Gender Recognition

Intelli-Signage capture and analyze shoppers profiles through a digital camera. Shoppers' profiles are determined via face detection, gender and age group determination algorithm.



## Remote Management

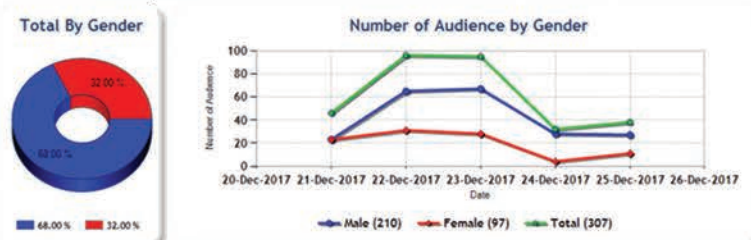
Remote management simplifies signage manageability by allowing companies to upload content remotely.



## Data Analytics

Intelli-Signage connects seamlessly to the cloud, data are available on-demand in real-time. Every single interaction produces intelligence data that can be used to help create personalized customer experience.

### Gender report

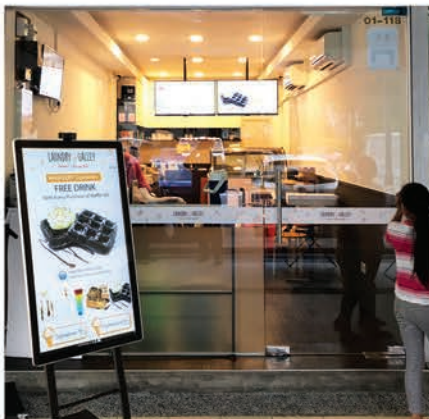


### Touch report



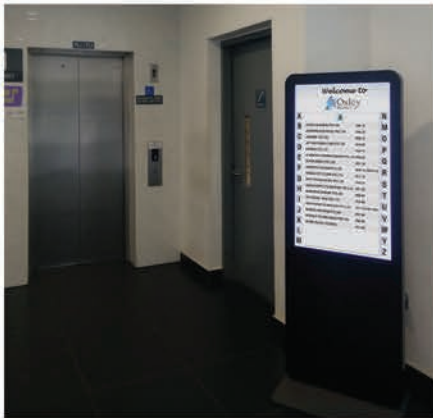


## Intelli-Signage Success Stories



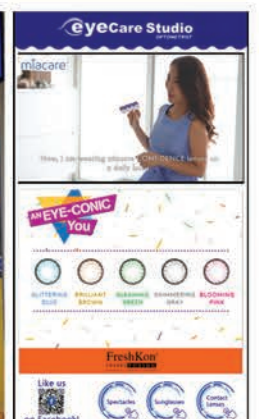
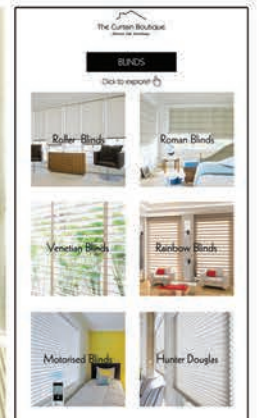


## Intelli-Signage Success Stories



Welcome to Oxley BizHub 2

A	M
ABSOLUTE MADE PTE LTD #06-12	N
ADAGIOPRE ELECTRICAL PTE LTD #05-23	O
AINONG PTE LTD #08-14	P
AP RISK CONSULTING PTE LTD #10-26	Q
APPROVE PTE LTD #05-14	R
ALANMICH CHEMOTOGRAPHY PTE LTD #08-20	S
ALPHA BRIGHT PTE LTD #01-18	T
ANENTECH SYSTEM PTE LTD #04-11/12/14-18	U
ANOMALYET STUDIO PTE LTD #11-13	V
ANTS TECHNOLOGIES PTE LTD #04-12	W
AQUILA SUPPLY & SERVICES PTE LTD #01-29	X
ARAS DEVELOPMENT PTE LTD #08-24	Y
ART SOCIAL HANG PTE LTD #10-48	Z
ASIA FUSION TECHNOLOGY PTE LTD #11-15/16/17/18	
ASIAFAC HOLDINGS PTE LTD #02-04	
AUNSEL TECHNOLOGIES PTE LTD #08-03	
AUNING BEAUTY SECRETS #11-08	





### Sanbot Nano

Dimension: 848 x 395 x 421 mm  
Weight: 19kg  
Runtime: 10 hours

### Sanbot Max

Dimension: 1455 x 765 x 615 mm  
Weight: 100kg  
Runtime: 18 hours

### Sanbot Elf

Dimension: 902 x 331 x 421 mm  
Weight: 19kg  
Runtime: 10 hours

Sanbot is an intelligent service robot with an open API platform, unleashing the power of Robotics and AI for retail, education, healthcare, hospitality and many other industries to deliver smarter and personalized services



**Automatic Recharging**



**Open API**



**Obstacle Avoidance**



**Projector**



**Facial Recognition**



**Speech Recognition**



## Application



Retail

Role: Promoter  
Benefits: Attract more customers



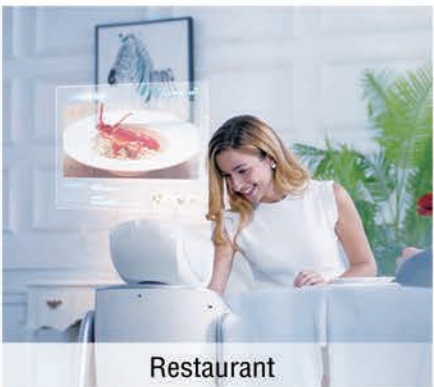
Education

Role: Teaching Assistant  
Benefits: Increase students participation



Hospitality

Role: Receptionist  
Benefits: Improve customers experience



Restaurant

Role: Waiter  
Benefits: Enhance customers dining experience



Healthcare

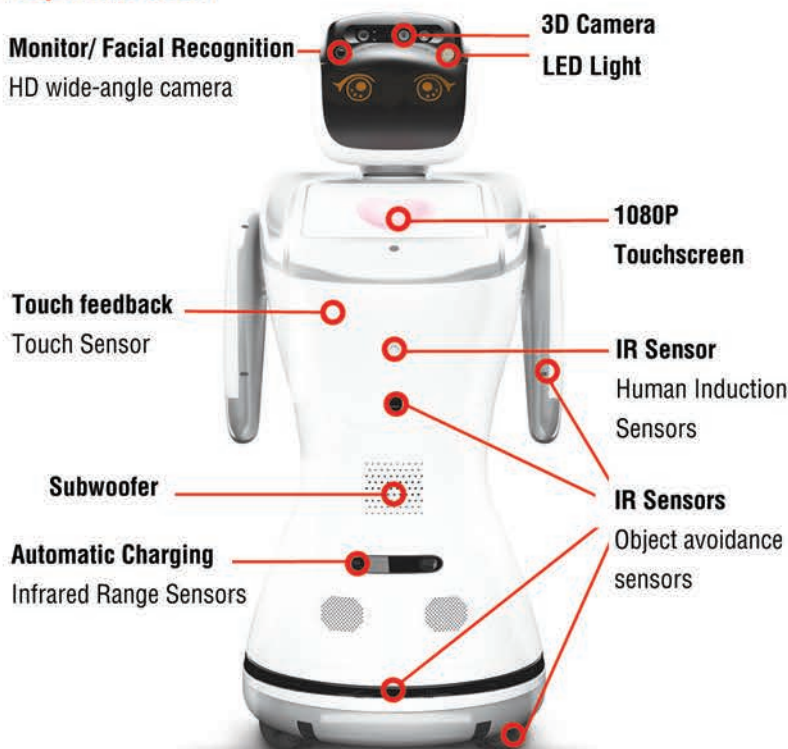
Role: Patient Companion  
Benefits: Help people take care of their loved one



Shopping Mall

Role: Receptionist, Promoter  
Benefits: Attract customers to increase foot traffic

## Specification



Size	92(H) x 30(D) x 40(W) cm
Weight	19 kg
Battery	Lithium battery 20Ah/300W (Runtime: 10 Hours, Standby: 20 hours)
Display	10.1" 1080p HD 10-point touch display
WIFI network	IEEE 802.11 a/b/g/n(2.4GHz/5GHz)
Wireless network	Bluetooth4.0, ZigBee
Moving speed	0.8m/s max
OS	ROS1.1 (based on Android 4.4)

### Sensor

Head	Mic x7, RGB Camera x2, 3D sensor x1, Touch sensor x7
Body	Gyroscope sensor x1, Human body induction sensor x2, IR evading obstacle sensor x1, IR message receiving sensor x6, Touch sensor x4, electronic compass sensor x1
Hand	IR evading obstacle sensor x4, Touch sensor x2
Leg	IR evading obstacle sensor x10, Omni Wheel x3





# Cloud



Survey System allows customer to provide immediate feedback about their experience, which is ideal for service counter applications such as hospital, banking and hospitality. Statistics are automatically tabulated and presented in an easy to read graphical format.



Email Notification



Staff Login



SMS Notification



Advertisement



Data Analytics



Remote Upload



## Hardware: 10.1" Wide Screen Panel PC



Front view



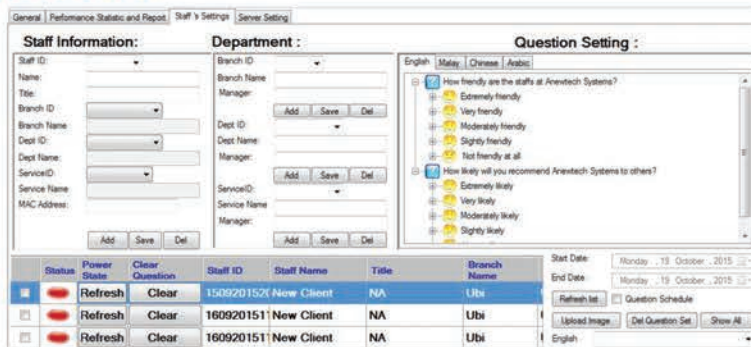
Side view



with desktop stand

- 10.1" Touch Screen with 16:10 (1280 x 800) widescreen display
- Projected Capacitive Touch Panel

## Software



- Support 4 languages (English + 3 others)
- Max 10 questions
- Each question max 5 answer (icon)
- Support advertisement in idle time (.jpg or .png)
- Editable staff setting and photo
- Editable questionnaires, icons
- Report in English only
- Real-time report, export to Excel spreadsheet

## How It Works?



### Page 1:

The system shows 1 question with 5 icons. If user click poor / bad icon, it goes to Page 2



### Page 2:

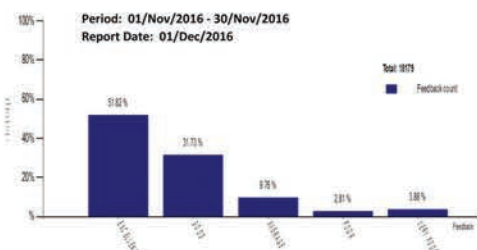
Multiple choice answer. User can choose more than one answer



### Page 3:

The system plays advertisement (image only) at idle time

## Real-time Report



Statistics are automatically tabulated and presented in an easy to read graphical format in real time. The report can be exported in Ms Excel Format and is set up to be delivered directly via email, providing key performance indicator (KPI) information straight to management.

Staff ID	Name	Question	Total	Excellent	Good	Average	Poor	Very poor
001	Winston	Please rate our service	2481	1361	835	181	46	58
002	William	Please rate our service	5522	2819	1766	535	160	242
003	Wendy	Please rate our service	3636	1788	1353	317	74	104
006	Winfried	Please rate our service	6	3	1	2	0	0
007	Wong	Please rate our service	580	344	118	69	21	28



Toilet feedback system enables visitor to submit a service request for cleaner to perform the necessary corrective action immediately. After a request is submitted, the system sends an email / SMS alert to the handphone of cleaner / supervisor. Cleaner is required to scan the ID card to login the system to clear the fault reporting, submit checklist, etc.

### Hardware Specification:

- 10" touch screen Panel PC with Mifare RFID
- 3G data SIM card (Optional)
- People counting sensor (Optional)
- Ammonia sensor (Optional)

### Software Specification:

- Administration module
- Reporting module
- Follow up & action close module
- Toilet checklist module
- SMS service (yearly subscription)
- Cloud service (yearly subscription)



Email Notification



Staff Login



SMS Notification



Ammonia Sensor



People Counting Sensor



Data Analytics



System Architecture



SMS Notification

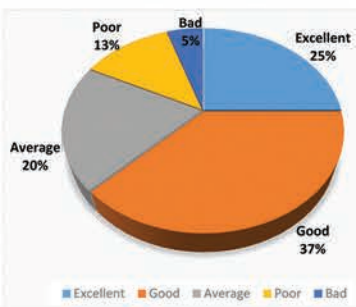
- The feedback submitted are sent to cleaner's phone via SMS
- Cleaner respond to the feedback promptly
- If after pre-defined time cleaner never respond, the system sends SMS to supervisor



Report

Toilet B1-M Employee: Alice Tang

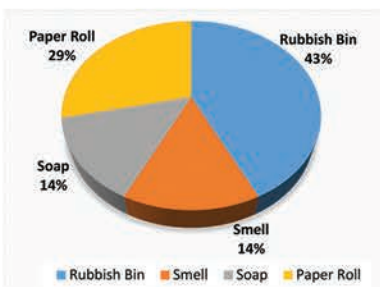
Feedback	Number	%
Excellent	10	25.00
Good	15	37.50
Average	8	20.00
Poor	5	12.50
Bad	2	5.00
<b>Total</b>	<b>40</b>	<b>100.00</b>



Overall Feedback

Toilet B1-M Employee: Alice Tang

Poor and Bad Feedback	Number	%
Rubbish Bin	3	42.86
Smell	1	14.29
Soap	1	14.29
Paper Roll	2	28.57
<b>Total</b>	<b>7</b>	<b>100.00</b>



Poor and Bad Feedback

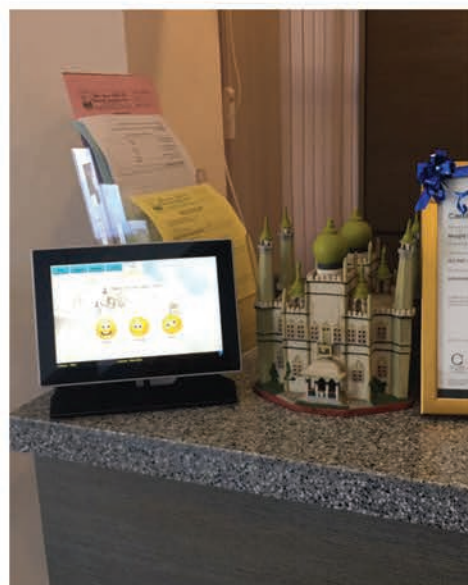
Toilet B1-M Employee: Alice Tang

Date:		15/4/2016	
Checklist	9:41:08 AM	12:24:08 PM	
Smell	✓	✓	
Floor	✓	✓	
Wall	✓	✓	
Rubbish Bin	✓	✓	
Mirror	✓	✓	
Basin	x	✓	
Soap	✓	✓	
Toilet Bowl	✓	✓	
Paper Roll	✓	✓	
Urinal	✓	✓	
Hand Dryer	x	✓	

Toilet Checklist



### Toilet Feedback System and Customer Survey System Success Stories

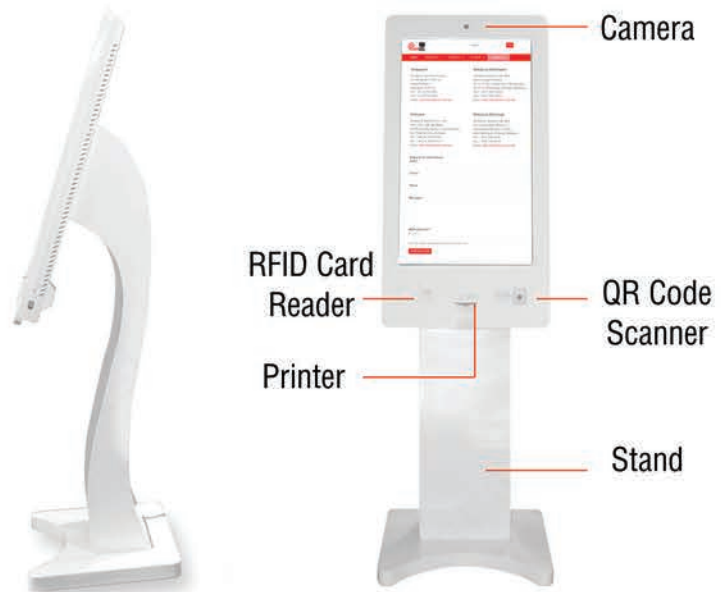




Built to support various self-service applications, All-in-one KIOSK comes with thermal printer, web camera, QR scanner & RFID card reader. The KIOSK is equipped with high performance Intel® Core i5 processor, enable business owner to deliver unified interactive services that increase customer satisfaction.

**KIOSK Specification:**

- Panel Size: 32" (9:16)
- Resolution: 1080 x1920
- Contrast ratio: 2000:1
- Brightness: 450cd/m<sup>2</sup>
- Viewing angle: V:178° , H:178°
- Build in speakers: stereo sound (10W+1W)
- CPU: Core i5 Processor
- Memory: 2 GB
- Storage: 128 GB
- WiFi: 802.11b/g/n


**Solution  
Integrated Platform**

**Touch  
Screen**

**Thermal  
Printer**

**Web  
Camera**

**RFID Card  
Reader**

**QR  
Scanner**

# Smart Retail Solutions



## Smart Retail Solutions

Video Wall  
Intelli-Signage  
Self-Service KIOSK  
Artificial Intelligence  
Toilet Feedback System  
Customer Survey System

[www.anewtech.com.sg](http://www.anewtech.com.sg)



### Singapore

#### Anewtech Systems Pte Ltd

62 Ubi Road 1, #04-14  
 Oxley Bizhub 2,  
 Singapore 408734  
 Tel: +65 6292 0801 Fax: +65 6292 0831  
 Email: sales@anewtech.com.sg

### Vietnam

#### Anewtech Systems Co., Ltd

Unit 1003, ABC Building,  
 10 Pho Quang, Ward 2, Tan Binh Dist.,  
 Ho Chi Minh City, Vietnam  
 Tel: +84 8 39976 650 Fax: +84 8 39976 651  
 Email: sales@anewtech.com.vn

### Malaysia

#### Selangor:

#### Anewtech Systems Sdn Bhd

Plaza Taragon Kelana  
 A-10-8, No 3, Jalan SS6/6 Kelana Jaya,  
 47301 Petaling Jaya, Selangor, Malaysia  
 Tel: +60 3 7887 6820 Fax: +60 3 7887 6821

### Malaysia

#### Penang:

#### Anewtech Systems Sdn Bhd

46-1, Jalan Bayu Mutiara 1, Taman Bayu Mutiara,  
 14000 Bukit Mertajam, Penang, Malaysia  
 Tel: +60 4 508 4830 Fax: +60 4 508 4920  
 Email: sales@anewtech.com.my